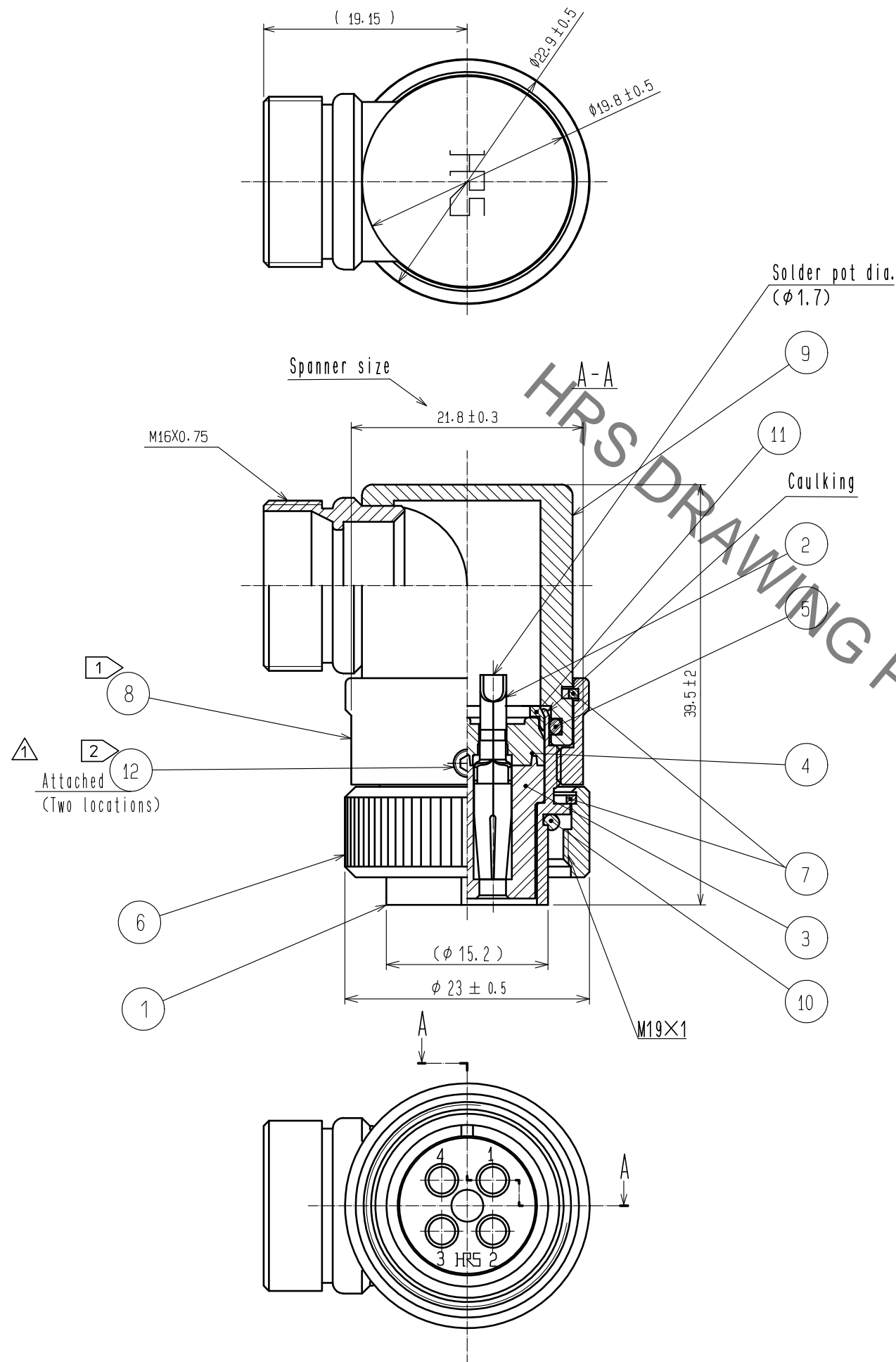


Jan.1.2022 Copyright 2022 HIROSE ELECTRIC CO., LTD. All Rights Reserved.
In case of consideration for using Automotive equipment / device which demand high reliability, kindly contact our sales window correspondents.



- Notes
- The recommended clamp torque of ref. No. ⑧ : 3 to 4 N·m. LOCTITE 243, HENKEL JAPAN or equivalent is recommended to prevent from loosening.
 - The recommended clamp torque of ref. No. ⑫ : 0.2 to 0.3 N·m. LOCTITE 243, HENKEL JAPAN or equivalent is recommended to prevent from loosening.
 - This products to be used with cable clamp JR13WCC-*(73)
※ designate diameter of applicable cable.
 - Rotation examples of ref. No. ⑧, ⑨ to ref. No. ① is shown.
 - The cable pull and twisting strength, waterproof tightness and other characteristics may differ, depending on the cable structure.
Please confirm before the use.

6	BRASS	NICKEL PLATING	12	STAINLESS STEEL	
5	NITRIL BUTADIENE RUBBER	(GRAY)	11	POLYACETAL	(WHITE)
4	PPS	(BLACK) UL94V-0	10	NITRIL BUTADIENE RUBBER	(GRAY)
3	PPS	(BLACK) UL94V-0	9	BRASS	NICKEL PLATING
2	COPPER ALLOY	SURFACE : GOLD PLATING 0.2μm min. UNDER : NICKEL PLATING 3μm min.	8	BRASS	NICKEL PLATING
1	BRASS	NICKEL PLATING	7	PHOSPHOR BRONZE	NICKEL PLATING
NO.	MATERIAL	FINISH . REMARKS	NO.	MATERIAL	FINISH . REMARKS

UNITS mm		SCALE	COUNT	DESCRIPTION OF REVISIONS	DESIGNED	CHECKED	DATE
		2 : 1	1		DIS-C-00003899	TY. SUZUKI	HY. KOBAYASHI
HIROSE ELECTRIC CO., LTD.		APPROVED : HY. KOBAYASHI		20180222	DRAWING NO. EDC-114785-32-00		
		CHECKED : HY. KOBAYASHI		20180222			
		DESIGNED : HY. KISHI		20180222	PART NO. RM15WTLP-4S(32)		
		DRAWN : MK. INOUE		20180208			
					CODE NO.	CL109-1888-9-32	1/1

Mouser Electronics

Authorized Distributor

Click to View Pricing, Inventory, Delivery & Lifecycle Information:

[Hirose Electric:](#)

[RM15WTLP-4S\(32\)](#)