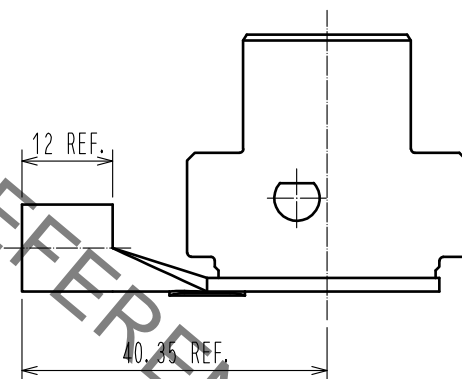
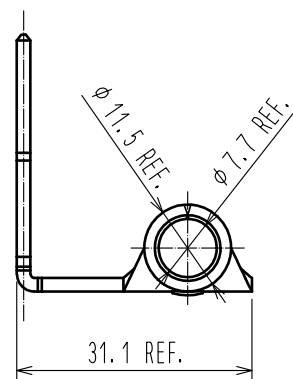
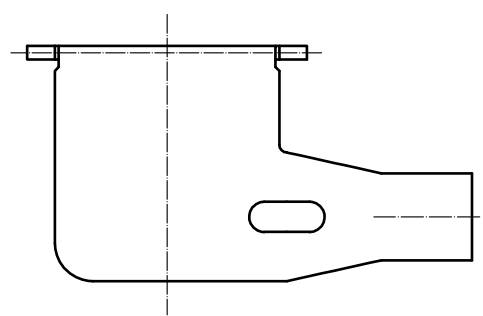
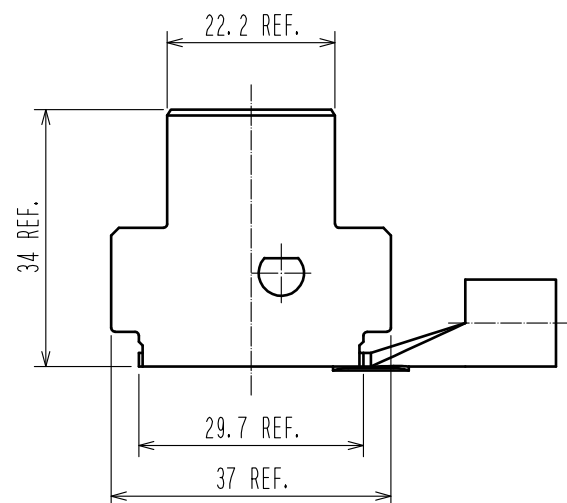
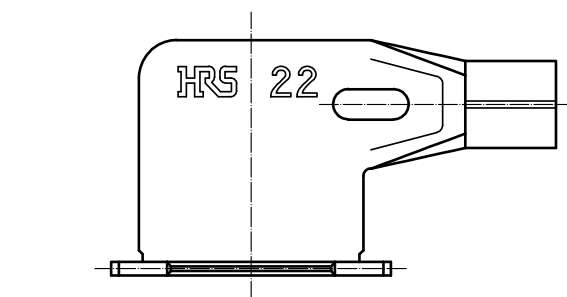
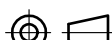


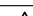


Sep.1.2021 Copyright 2021 HIROSE ELECTRIC CO., LTD. All Rights Reserved.
In case of consideration for using Automotive equipment / device which demand high reliability, kindly contact our sales window correspondents.



- NOTE 1. PLEASE USE IN CONJUNCTION WITH PS3F-PC-HOLDER.
PLEASE REFER ETAD-E3102 FOR ASSEMBLY PROCEDURE.
2. THIS PRODUCT IS COPPER BASE MATERIAL IS SOFTENED BY THE HEAT OF
THE BRAZING PROCESS OF CRIMPING PART.NOTE THE HANDLING THE HARNESS AND PACKING.

					1	COPPER ALLOY	SILVER PLATING		
					NO.	MATERIAL	FINISH . REMARKS		
UNITS mm		SCALE 1 : 1		COUNT	DESCRIPTION OF REVISIONS		DESIGNED	CHECKED	DATE
 HIROSE ELECTRIC CO., LTD.			APPROVED : NM. NISHIMATSU		15.07.30	DRAWING NO.		EDC-128239-01-00	
			CHECKED : NM. NISHIMATSU		15.07.30	PART NO.		PS3F-RPC(22)(01)	
			DESIGNED : MO. SHIMOYAMA		15.07.29	CODE NO.		CL236-1057-0-01	
			DRAWN : MO. SHIMOYAMA		15.07.29			 1/1	

Mouser Electronics

Authorized Distributor

Click to View Pricing, Inventory, Delivery & Lifecycle Information:

[Hirose Electric:](#)

[PS3F-RPC\(22\)\(01\)](#)