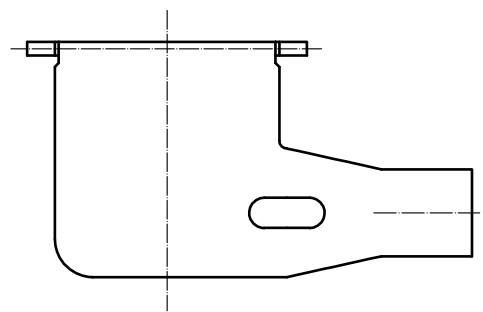
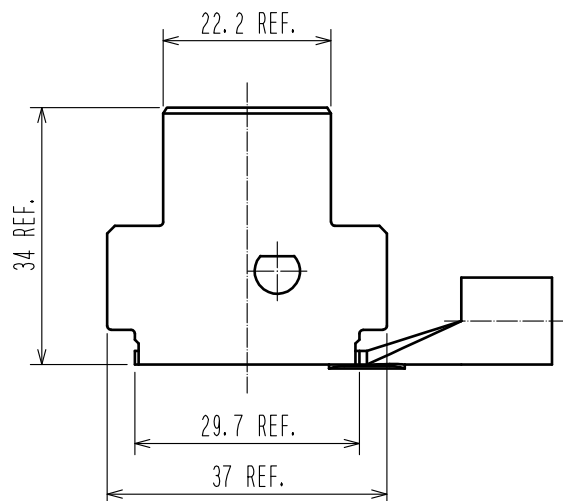
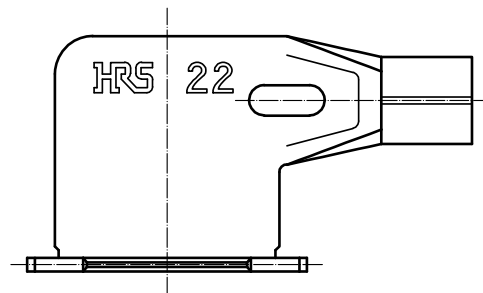


Aug.1.2021 Copyright 2021 HIROSE ELECTRIC CO., LTD. All Rights Reserved.
In case of consideration for using Automotive equipment / device which demand high reliability, kindly contact our sales window correspondents.



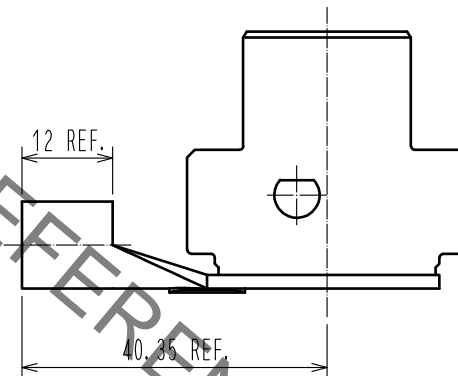
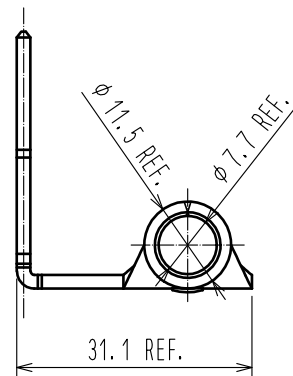
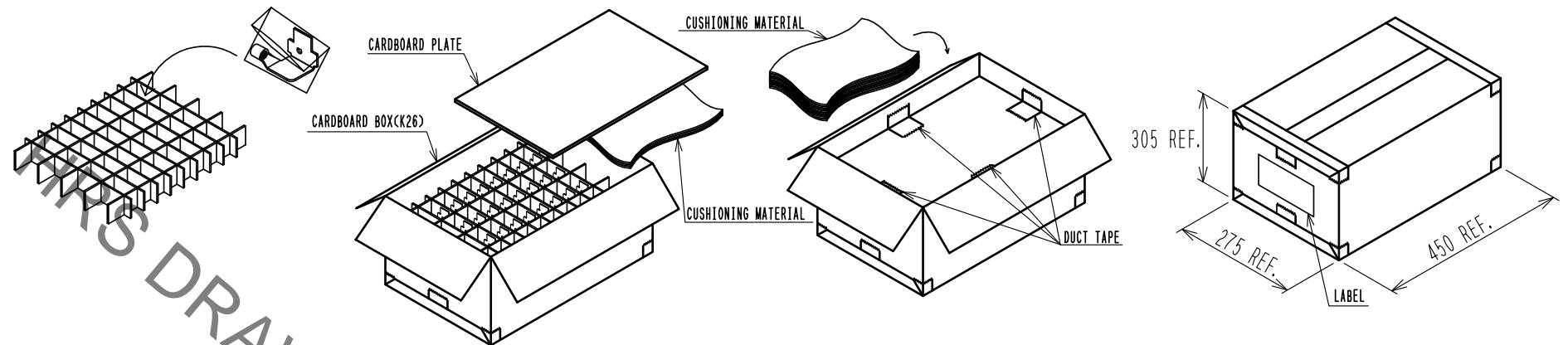
2 DRAWING FOR PACKING(FREE)

1. PUT THE PRODUCT IN VINYL BAGS.
EXCESS PORTION OF VINYL BAGS IS
FOLDED. PUT THE CARDBOARD PARTITION.
(32 PIECES PER 1-STAGE)

2. PUT IT ON TOP OF THE CARDBOARD TRAY ACCOMMODATING
THE PRODUCTS (K26) IN FOUR STAGES.
IT COVERED THE CARDBOARD PLATE ON IT.
(32 PIECES \times 2-STAGE = 64 PIECES PER 1 BOX)

3. THE CARDBOARD BOX AND THE CARDBOARD PLATE FIX
FOUR LOCATIONS IN DUCT TAPE. THE REPEATED
CUSHIONING MATERIAL ON THE CARDBOARD PLATE,
AND LAID WITHOUT GAPS.

4. CLOSE THE CARDBOARD BOX AND FIX DUCT TAPE.
PASTE LABEL ON THE SIDE OF THE CARDBOARD BOX.



- NOTE 1. PLEASE USE IN CONJUNCTION WITH PS3F-PC-HOLDER.
PLEASE REFER ETAD-E3102 FOR ASSEMBLY PROCEDURE.
- 2 THE SALES UNIT IS OF THIS PRODUCT IS THE CARTON. (64 PIECES)
THE SIZE OF THE CARDBOARD BOX IS THE 450mm \times 275mm \times 305mm.
3. THIS PRODUCT IS COPPER BASE MATERIAL IS SOFTENED BY THE HEAT OF
THE BRAZING PROCESS OF CRIMPING PART. NOTE THE HANDLING THE HARNESS AND PACKING.

| 1 | | COPPER ALLOY | | SILVER PLATING | |
|-------------|--|---------------------------|--|--------------------------|--|
| NO. | | MATERIAL | | FINISH . REMARKS | |
| UNITS | | SCALE | | COUNT | |
| mm | | 1 : 1 | | DESCRIPTION OF REVISIONS | |
| HRS | | HIROSE ELECTRIC CO., LTD. | | DESIGNED | |
| APPROVED | | : NM. NISHIMATSU | | 15. 07. 25 | |
| CHECKED | | : NM. NISHIMATSU | | 15. 07. 25 | |
| DESIGNED | | : WR. YAMADA | | 15. 07. 24 | |
| DRAWN | | : KK. UEHARA | | 15. 06. 11 | |
| DRAWING NO. | | EDC-128239-00-00 | | PART NO. | |
| CODE NO. | | CL236-1057-0-00 | | 1/1 | |

Mouser Electronics

Authorized Distributor

Click to View Pricing, Inventory, Delivery & Lifecycle Information:

[Hirose Electric:](#)

[PS3F-RPC\(22\)](#)