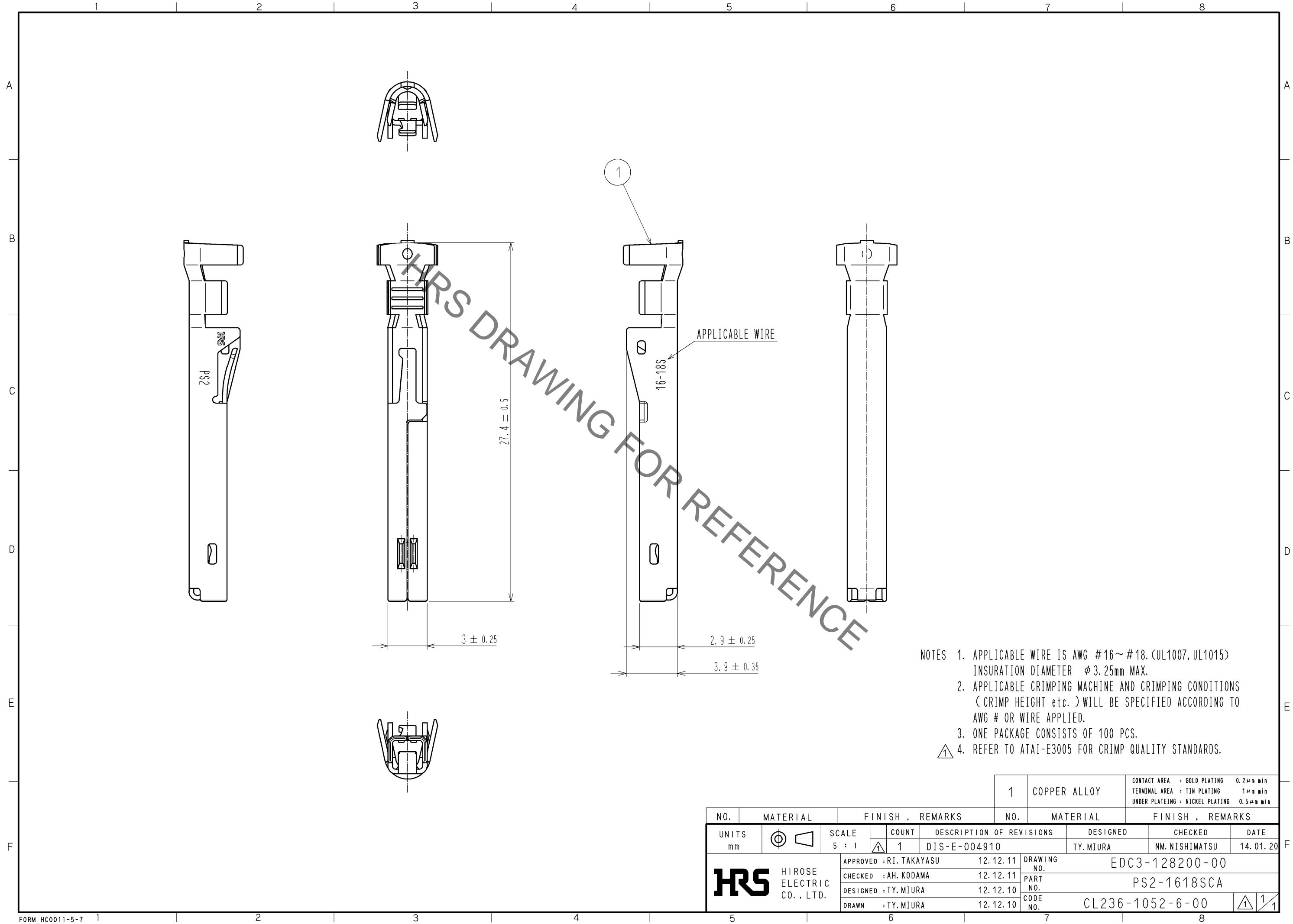


Jan.1.2022 Copyright 2022 HIROSE ELECTRIC CO., LTD. All Rights Reserved.  
In case of consideration for using Automotive equipment / device which demand high reliability, kindly contact our sales window correspondents.



- NOTES 1. APPLICABLE WIRE IS AWG #16~#18.(UL1007,UL1015)  
INSURATION DIAMETER  $\phi$  3.25mm MAX.  
2. APPLICABLE CRIMPING MACHINE AND CRIMPING CONDITIONS  
(CRIMP HEIGHT etc.) WILL BE SPECIFIED ACCORDING TO  
AWG # OR WIRE APPLIED.  
3. ONE PACKAGE CONSISTS OF 100 PCS.  
⚠ 4. REFER TO ATAI-E3005 FOR CRIMP QUALITY STANDARDS.

				1	COPPER ALLOY	CONTACT AREA : GOLD PLATING 0.2μm min TERMINAL AREA : TIN PLATING 1μm min UNDER PLATEING : NICKEL PLATING 0.5μm min
NO.	MATERIAL	FINISH , REMARKS		NO.	MATERIAL	FINISH , REMARKS
UNITS mm		SCALE 5 : 1	COUNT 1	DESCRIPTION OF REVISIONS		DESIGNED TY.MIURA
				DIS-E-004910		CHECKED NM. NISHIMATSU
				APPROVED : RI. TAKAYASU 12.12.11		DATE 14.01.20
				CHECKED : AH. KODAMA 12.12.11		
				DESIGNED : TY. MIURA 12.12.10		
				DRAWN : TY. MIURA 12.12.10		
				DRAWING NO. EDC3-128200-00		
				PART NO. PS2-1618SCA		
				CODE NO. CL236-1052-6-00		
						1/1

# Mouser Electronics

Authorized Distributor

Click to View Pricing, Inventory, Delivery & Lifecycle Information:

[Hirose Electric:](#)

[PS2-1618SCA](#)