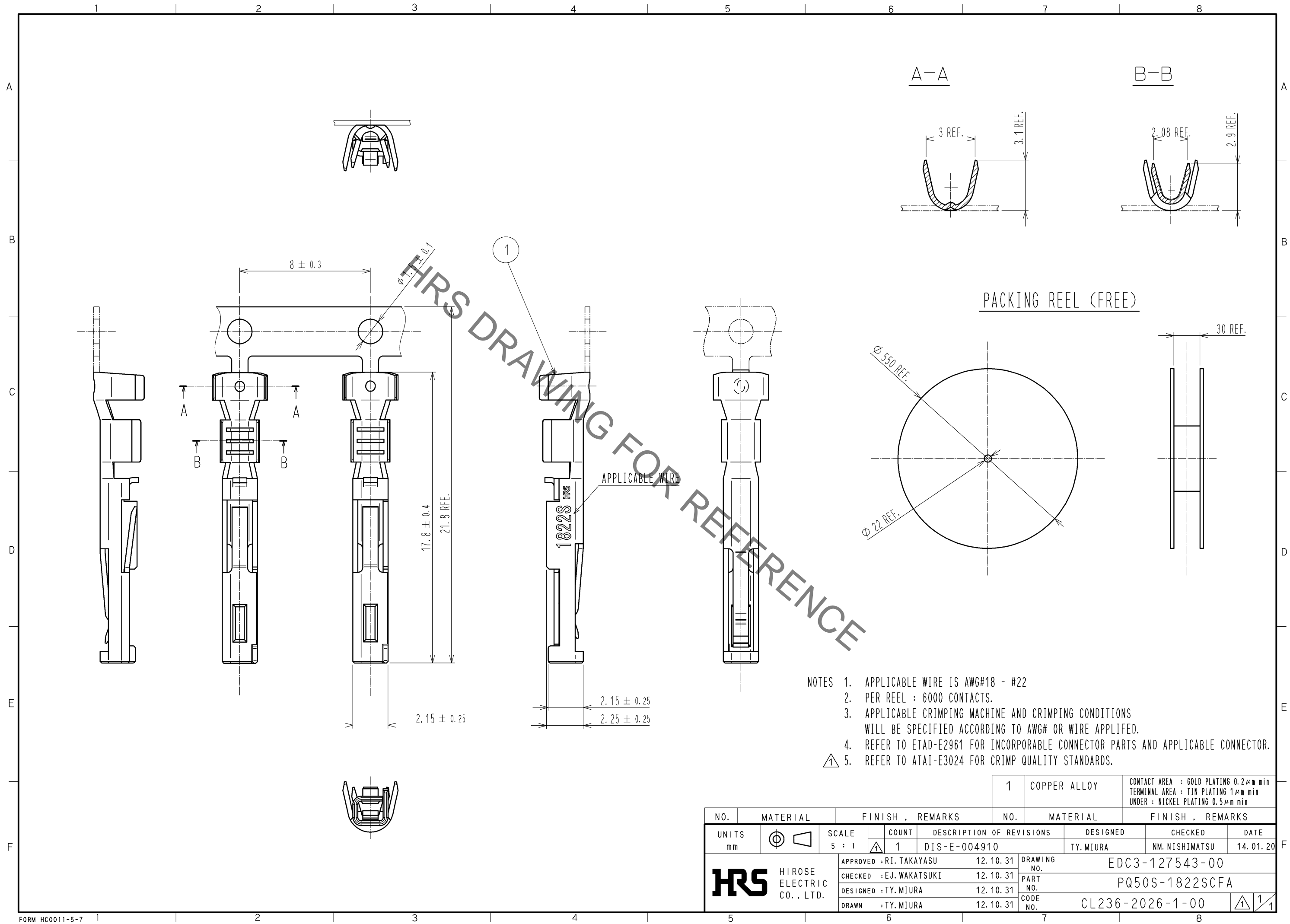






Sep.1.2021 Copyright 2021 HIROSE ELECTRIC CO., LTD. All Rights Reserved.
In case of consideration for using Automotive equipment / device which demand high reliability, kindly contact our sales window correspondents.



- NOTES
1. APPLICABLE WIRE IS AWG#18 - #22
 2. PER REEL : 6000 CONTACTS.
 3. APPLICABLE CRIMPING MACHINE AND CRIMPING CONDITIONS WILL BE SPECIFIED ACCORDING TO AWG# OR WIRE APPLIED.
 4. REFER TO ETAD-E2961 FOR INCORPORABLE CONNECTOR PARTS AND APPLICABLE CONNECTOR.
 5. REFER TO ATAI-E3024 FOR CRIMP QUALITY STANDARDS.

| | | | | | | | | | | |
|---|---|--|-------------------------|---|--------------|---|--|-----------------------|---------------------------|--------------------|
| | | | | 1 | COPPER ALLOY | | CONTACT AREA : GOLD PLATING 0.2μm min TERMINAL AREA : TIN PLATING 1μm min UNDER : NICKEL PLATING 0.5μm min | | | |
| NO. | MATERIAL | | FINISH . REMARKS | | | NO. | MATERIAL | | FINISH . REMARKS | |
| UNITS mm |  | | SCALE 5 : 1 |  | COUNT 1 | DESCRIPTION OF REVISIONS DIS-E-004910 | | DESIGNED TY. MIURA | CHECKED NM. NISHIMATSU | DATE 14. 01. 20 |
|  HIROSE ELECTRIC CO., LTD. | | | APPROVED : RI. TAKAYASU | | 12. 10. 31 | DRAWING NO. EDC3-127543-00 | | | | |
| | | | CHECKED : EJ. WAKATSUKI | | 12. 10. 31 | PART NO. PQ50S-1822SCFA | | | | |
| | | | DESIGNED : TY. MIURA | | 12. 10. 31 | CODE NO. | | | | |
| | | | DRAWN : TY. MIURA | | 12. 10. 31 | CL236-2026-1-00 | | | | |
| | | | | | |  1 / 1 | | | | |

Mouser Electronics

Authorized Distributor

Click to View Pricing, Inventory, Delivery & Lifecycle Information:

[Hirose Electric:](#)

[PQ50S-1822SCFA](#)