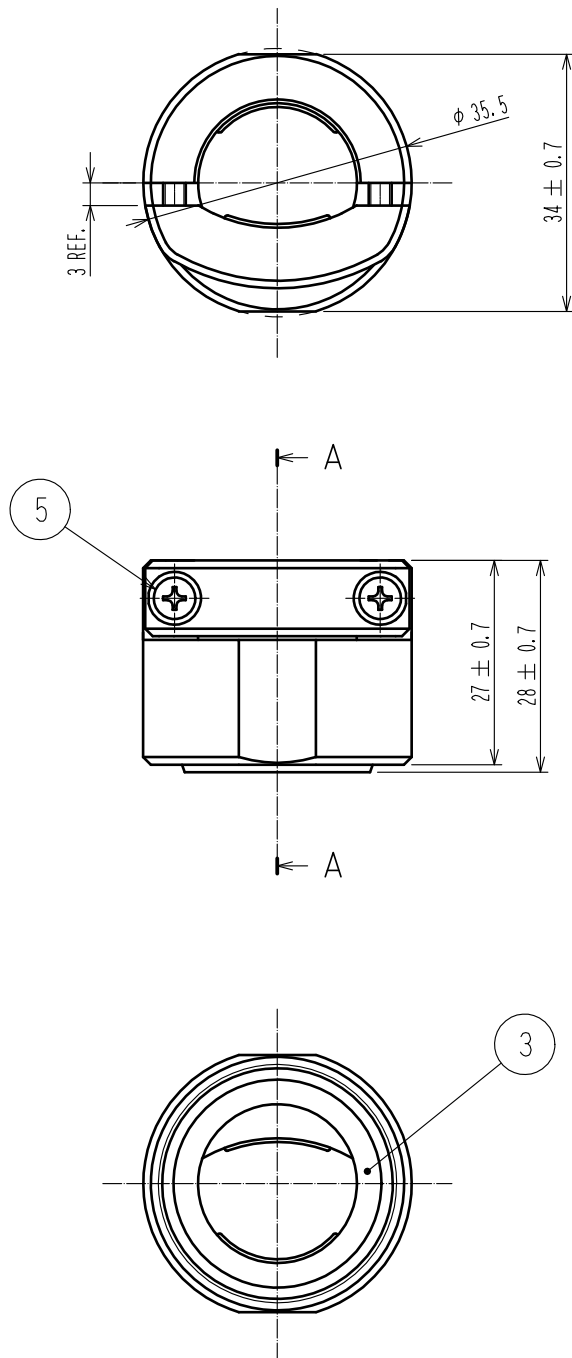


Sep.1.2021 Copyright 2021 HIROSE ELECTRIC CO., LTD. All Rights Reserved.
In case of consideration for using Automotive equipment / device which demand high reliability, kindly contact our sales window correspondents.



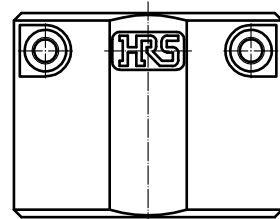
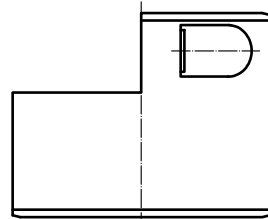
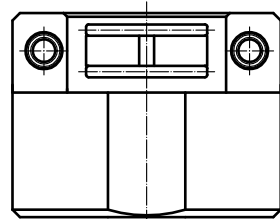
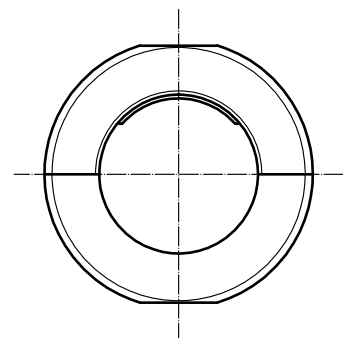
HRS DRAWING FOR REFERENCE

- NOTES
1. REFER TO ETAD-E3022 FOR THE CONFORMITY CONNECTORS AND CONTACTS USED IN COMBINATION WITH THIS PRODUCT.
 2. REFER TO ETAD-E3011 FOR THE PROCEDURE OF THE CABLE ASSEMBLY.
 3. THE APPLICABLE CABLE OUTSIDE DIAMETER OF THIS PRODUCT IS 17.5 mm.

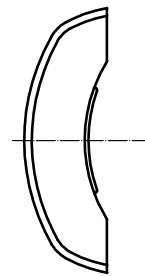
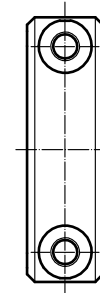
2	PPS	BLACK. UL94V-0	5	BRASS		NICKEL PLATING
1	PPS	BLACK. UL94V-0	4	BRASS		NICKEL PLATING
			3	NBR		BLACK
NO.	MATERIAL	FINISH . REMARKS	NO.	MATERIAL	FINISH . REMARKS	
UNITS mm		SCALE 1 : 1	COUNT 2	DESCRIPTION OF REVISIONS DIS-E-00005696		DESIGNED HY. MATSUDA
HIROSE ELECTRIC CO., LTD.		APPROVED : RI. TAKAYASU	20130205	DRAWING NO. EDC-127527-00-00		
		CHECKED : NM. NISHIMATSU	20130205	PART NO. PQW-CMC(17.5)		
		DESIGNED : TS. SAKAIZAWA	20130204	CODE NO. CL0236-2019-6-00		
		DRAWN : TS. SAKAIZAWA	20130204			

Sep.1.2021 Copyright 2021 HIROSE ELECTRIC CO., LTD. All Rights Reserved.
In case of consideration for using Automotive equipment / device which demand high reliability, kindly contact our sales window correspondents.

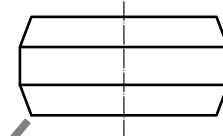
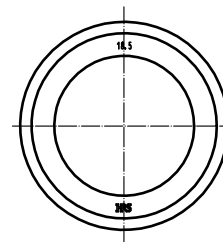
ASSEMBLY STATE OF REFERENCE No.1 AND 4



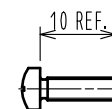
REFERECE No.2



REFERENCE No.3



REFERENCE No.5



DRAWING NO.	EDC-127527-00-00
PART NO.	PQW-CM<17.5>
CODE NO.	CL0236-2019-6-00



Mouser Electronics

Authorized Distributor

Click to View Pricing, Inventory, Delivery & Lifecycle Information:

[Hirose Electric:](#)

[PQW-CM\(17.5\)](#)