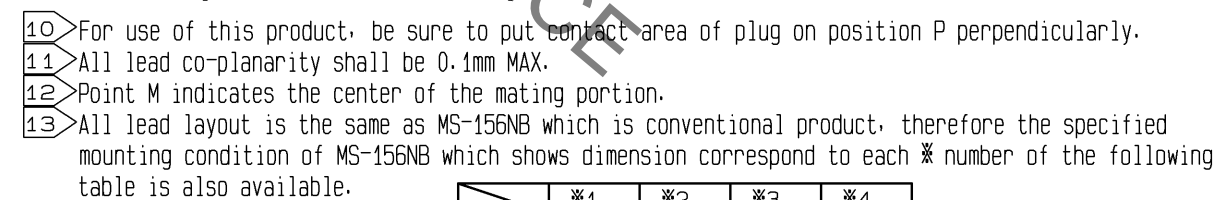
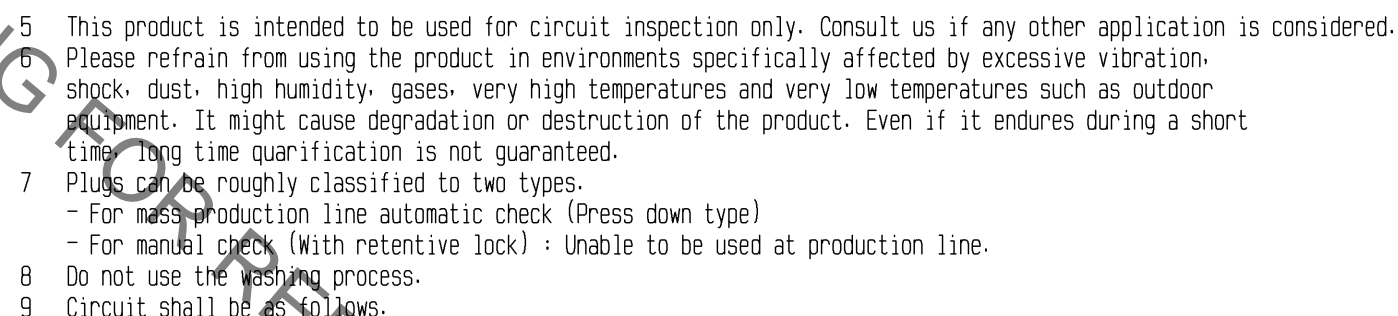
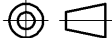
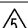

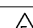
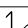


~Recommened Mounting of MS-156HF coaxial switch
on the PCB during the manufacturing process~

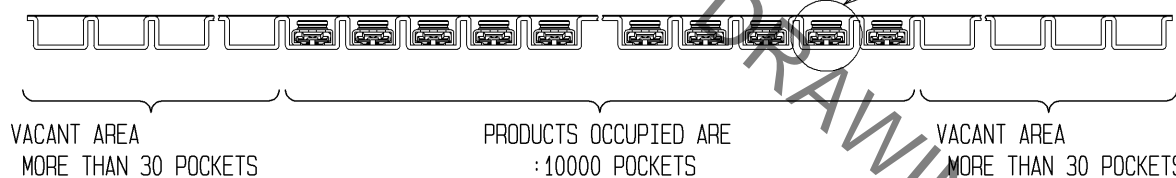


	※1	※2	※3	※4
size	1.05	0.55	1.05	0.3

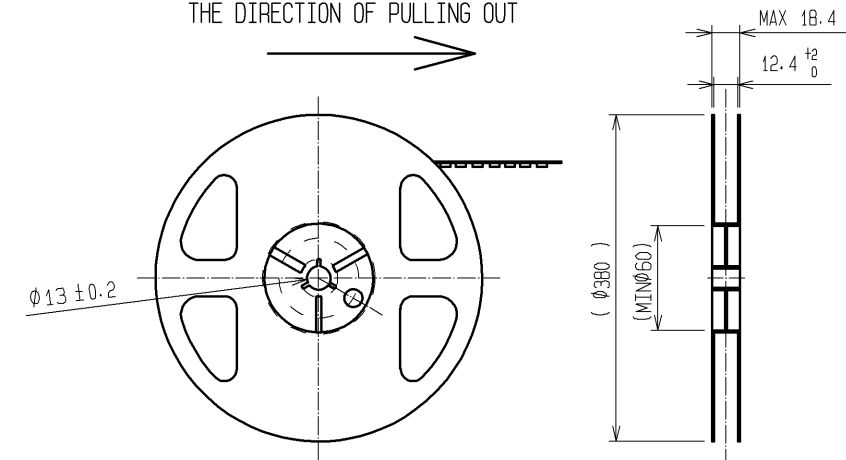
3	BERYLLIUM COPPER	SELECTIVE GOLD PLATING	6	PS	
2	6T-NYLON		5	PS	
1	PHOSPHOR BRONZE	GOLD PLATING	4	PHOSPHOR BRONZE	SELECTIVE GOLD PLATING
NO.	MATERIAL	FINISH . REMARKS	NO.	MATERIAL	FINISH . REMARKS

UNITS mm		SCALE 10 : 1		COUNT 2	DESCRIPTION OF REVISIONS DIS-J-000892	DESIGNED AS. KASUGA	CHECKED RZ. KANO	DATE 08. 07. 17
 HIROSE ELECTRIC CO., LTD.		APPROVED : KJ. KAWAMURA	06. 09. 29	DRAWING NO. EDC3-180639-00				
		CHECKED : TY. OZAKI	06. 09. 29	PART NO. MS-156HF				
		DESIGNED : DS. YAMAKOSHI	06. 09. 15	CODE NO. CL358-0238-4-00				
		DRAWN : DS. YAMAKOSHI	06. 09. 15					
								

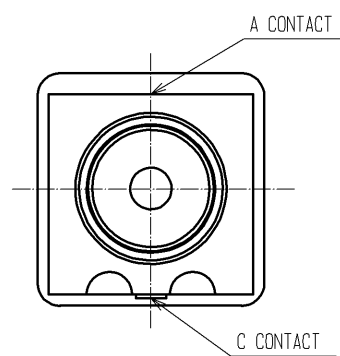
THE DIRECTION OF PULLING OUT



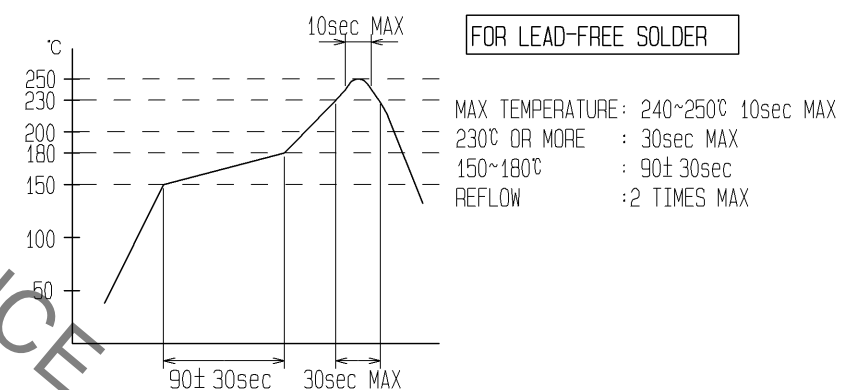
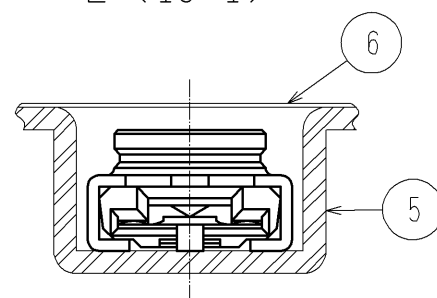
10,000 PIECES PER REEL
THE DIRECTION OF PULLING OUT



D (10:1)



The diagram shows a square block with dimensions (27) and (405). A circular disk with a central hole is shown next to it, labeled TAPE. An arrow points from the disk to the block, indicating a relationship or process.

$$E(10:1)$$


HRS	DRAWING NO.	EDC3-180639-00	
	PART NO.	MS-156HF	
	CODE NO.	CL358-0238-4-00	<div style="border: 1px solid black; padding: 2px; display: inline-block;">5</div> <div style="border: 1px solid black; padding: 2px; display: inline-block;">2/2</div>

Mouser Electronics

Authorized Distributor

Click to View Pricing, Inventory, Delivery & Lifecycle Information:

[Hirose Electric:](#)

[MS-156HF](#)