


Note 1 Please do not change the specified layout of the PCB dimension and the layout of the stencil plate dimension and thickness otherwise could not be responsible for the solderability of the product.

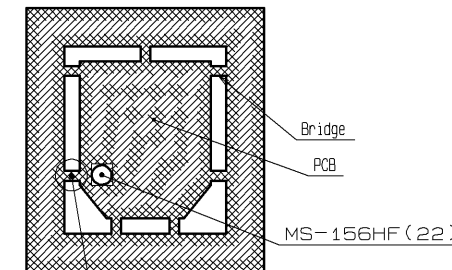
2 When copper-foil and resist are designed on the  area where underneath the product, Hirose can not gurantee the product.

3 Manual soldering could not be accepted on this product to prevent solder wicking and flux penetration.

4 The bridges should be designed with a sufficient distance from MS-156HF(22) to prevent getting the cutting micro chips into the contact area.

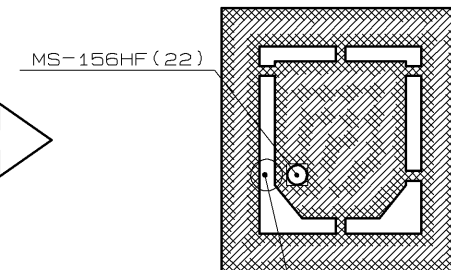
~Example of PCB design~ (Layout of MS-156HF(22) and Bridge)

~No good design~



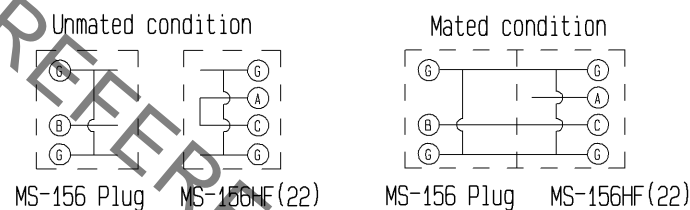
In this position where the bridge is close to MS-156HF(22), there is possibility of causing disfunction caused by what the cutting micro chips get into MS-156HF(22) when cutting PCB.

~Recommended design~



The cut position should be designed with a sufficient distance from MS-156HF(22).

- 5 Do not use this product as an interface, this product is only for circuit inspection.
- 6 Please refrain from using the product in environments specifically affected by excessive vibration, shock, dust, high humidity, gases, very high temperatures and very low temperatures such as outdoor equipment. It might cause degradation or destruction of the product. Even if it endures during a short time, long time quarification is not guaranteed.
- 7 Plugs can be roughly classified to two types.
- For mass production line automatic check (Press down type)
  - For manual check (With retentive lock) : Unable to be used at production line.
- 8 Do not use a washing process.
- 9 Circuit shall be as follows.






- 10 For use of this product, be sure to put contact area of plug on position P perpendicularly.
- 11 Lead coplanarity is to be 0.1mm MAX.
- 12 Point M indicates the center of the mating portion.
- 13 Vacuum capflat that can be oriented in any direction.
- 14 All lead layout is the same as MS-156NB which is conventional product, therefore the specified mounting condition of MS-156NB which shows dimension correspond to each ♯ number of the following is also available.

	※1	※2	※3	※4
size	1.05	0.55	1.05	0.3

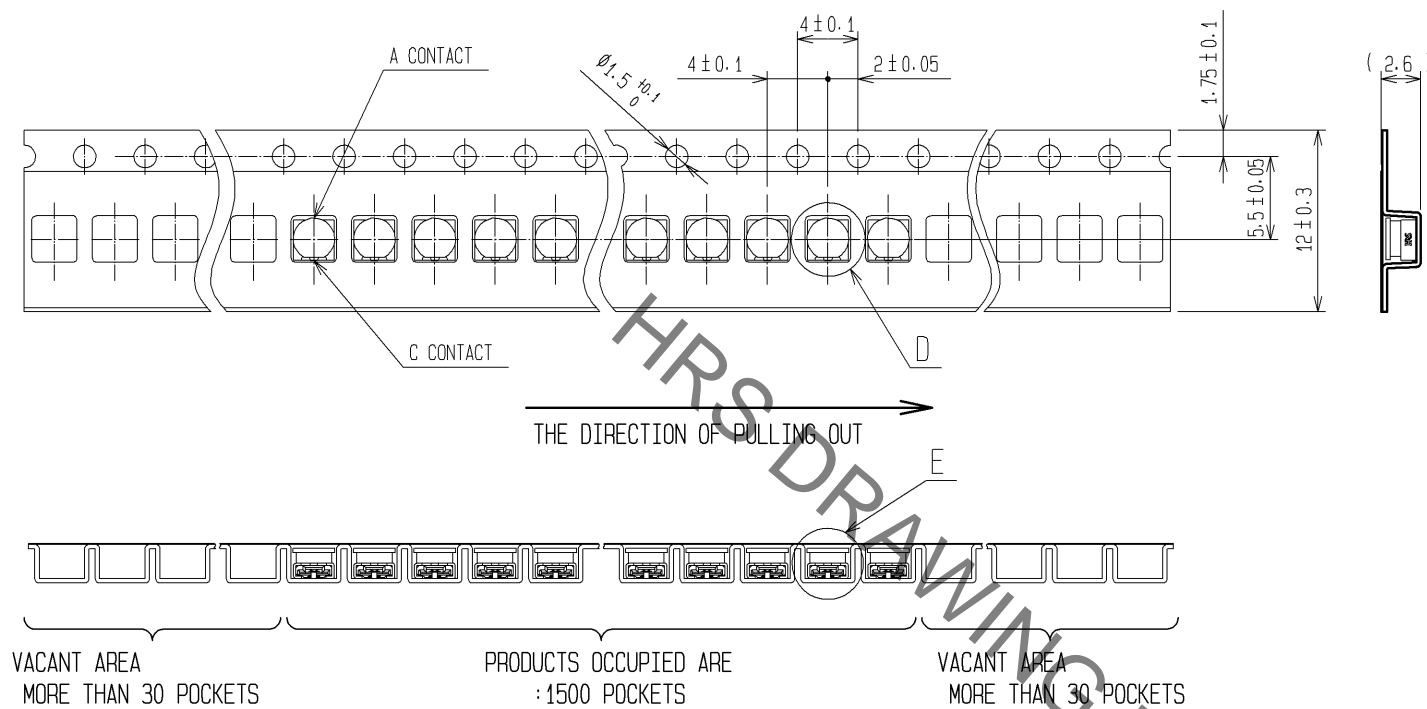
- 2 15 Vacuum cap is not applicable for halogen free due to the Sub-material for mounting.

3	BERYLLIUM COPPER	SELECTIVE GOLD PLATING	7	PS	
2	6T-NYRON		6	PS	
1	PHOSPHOR BRONZE	GOLD PLATING	5	6T-NYRON	
NO.	MATERIAL	FINISH . REMARKS	NO.	MATERIAL	FINISH . REMARKS

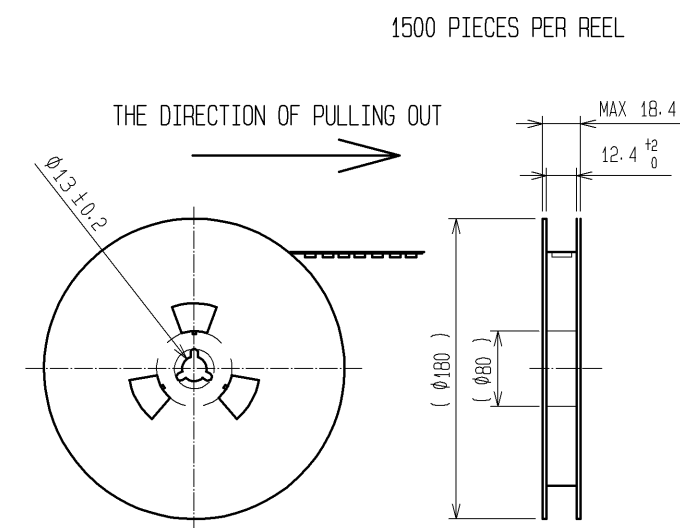
UNITS mm		SCALE 10 : 1	COUNT 2	DESCRIPTION OF REVISIONS DIS-J-000909	DESIGNED DS. YAMAKOSHI	CHECKED TY. OZAKI	DATE 08. 09. 27
 <b>HIROSE ELECTRIC CO., LTD.</b>		APPROVED : KJ. KAWAMURA	08. 03. 10	DRAWING NO. EDC3-180639-05			
		CHECED : TY. OZAKI	08. 03. 10	PART NO. MS-156HF(22)			
		DESIGNED : DS. YAMAKOSHI	08. 03. 07	CODE NO. CL358-0238-4-22			
		DRAWN : DS. YAMAKOSHI	08. 03. 07	 			

Jan.1.2022 Copyright 2022 HIROSE ELECTRIC CO., LTD. All Rights Reserved.  
In case of consideration for using Automotive equipment / device which demand high reliability, kindly contact our sales window correspondents.

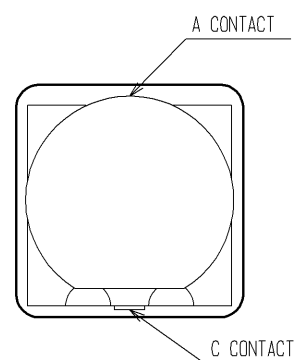
## PACKAGING SPECIFICATION



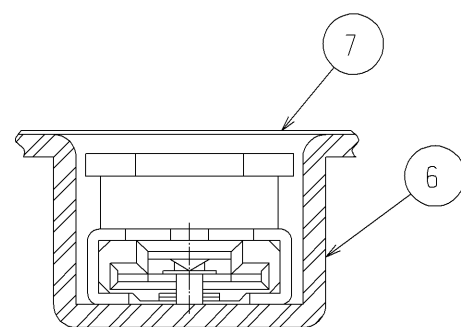
## REEL DIMENSIONS(FREE)



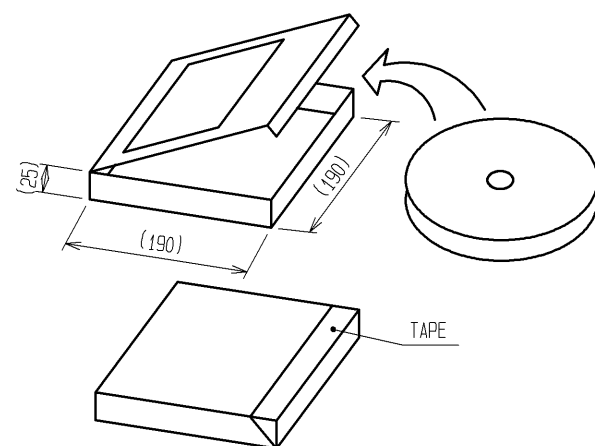
D (10:1)



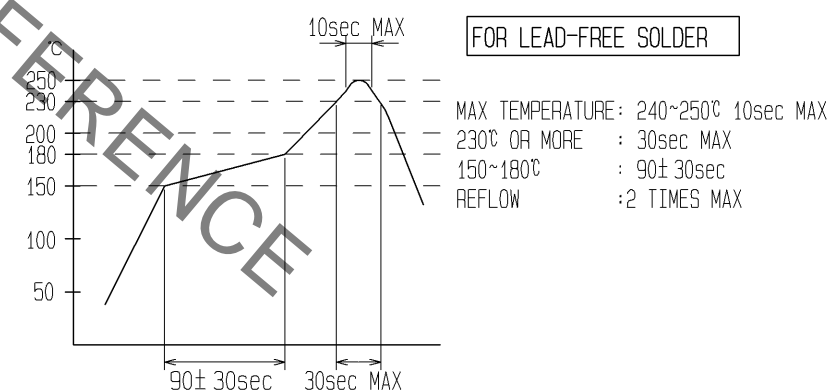
E (10:1)



## OUTER PACKAGING CASE (FREE)



## RECOMMENDED REFLOW TEMPERATURE PROFILE



UNITS	SCALE	COUNT	DESCRIPTION OF REVISIONS	DESIGNED	CHECKED	DATE
mm	2 : 1	△	DIS-J-000909	DS. YAMAKOSHI	TY. OZAKI	08. 09. 27
<b>HRS</b> HIROSE ELECTRIC CO., LTD.			APPROVED : KJ. KAWAMURA	08. 03. 10	DRAWING NO. EDC3-180639-05	
			CHECKED : TY. OZAKI	08. 03. 10	PART NO. MS-156HF(22)	
			DESIGNED : DS. YAMAKOSHI	08. 03. 07	CODE NO. CL358-0238-4-22	
			DRAWN : DS. YAMAKOSHI	08. 03. 07		

# Mouser Electronics

Authorized Distributor

Click to View Pricing, Inventory, Delivery & Lifecycle Information:

[Hirose Electric:](#)

[MS-156HF\(22\)](#)