



13 (TOLERANCE  $\pm 0.05\text{mm}$ )

There is possibility of a causing disfunction on the condition other than specified.



Please comply with the following notes as a request for cooperation to our customers due to the micro precision machinery component.  
(We ask all our customers for their understanding of the following notes and their cooperation.)

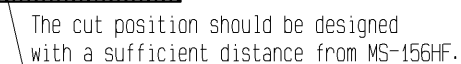
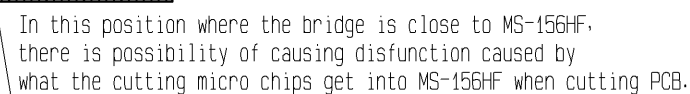
13 THICKNESS: 0.1~0.12mm

There is possibility of a causing disfunction on the condition other than specified.

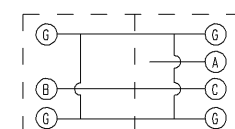


~Example of PCB design~ (Layout of MS-156HF and Bridge)

~Recommended design~



- Mated condition

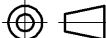
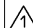


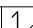


MS-156 Plug MS-156HF

- 1

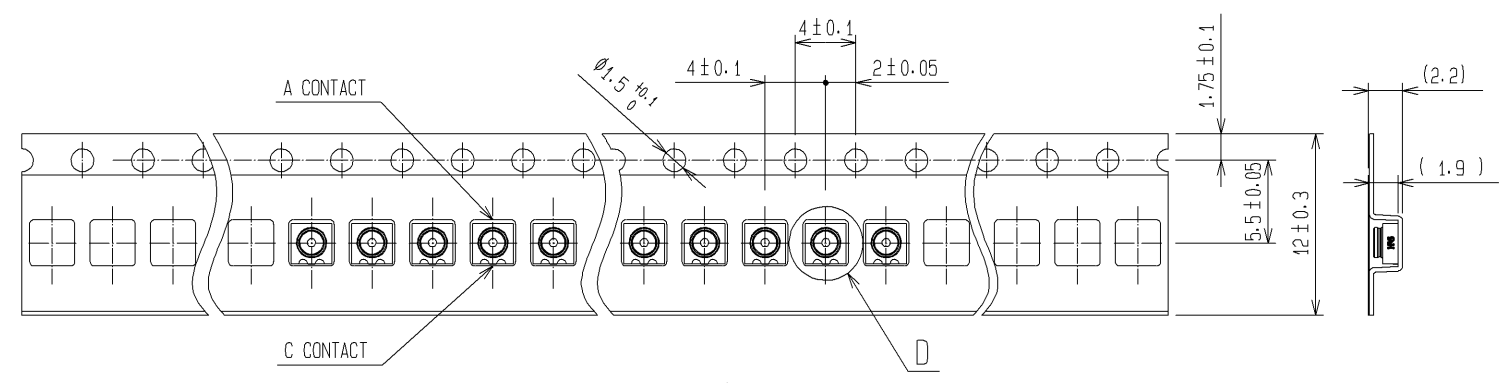
	※1	※2	※3	※4
size	1.05	0.55	1.05	0.3

3	BERYLLIUM COPPER	SELECTIVE GOLD PLATING		6	PS		
2	6T-NYRON			5	PS		
1	PHOSPHOR BRONZE	GOLD PLATING		4	PHOSPHOR BRONZE	SELECTIVE GOLD PLATING	
NO.	MATERIAL	FINISH . REMARKS		NO.	MATERIAL	FINISH . REMARKS	

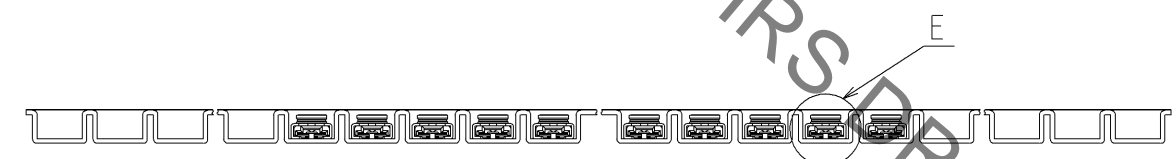
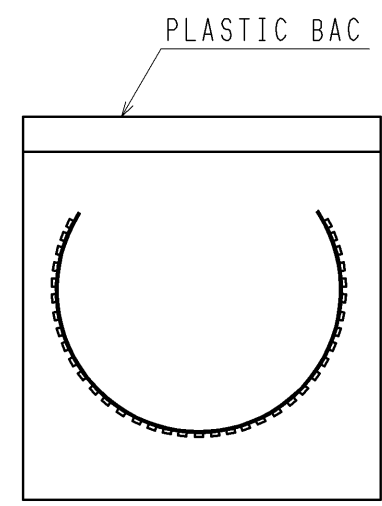
UNITS mm		SCALE 10 : 1		COUNT 1	DESCRIPTION OF REVISIONS DIS-J-000833	DESIGNED DS. YAMAKOSHI	CHECKED TY. OZAKI	DATE 08. 04. 0
 HIROSE ELECTRIC CO., LTD.		APPROVED : KJ. KAWAMURA	08. 03. 10		DRAWING NO.	EDC3-180639-04		
		CHECED : TY. OZAKI	08. 03. 10		PART NO.	MS-156HF(01)		
		DESIGNED : DS. YAMAKOSHI	08. 03. 07		CODE NO.	CL358-0238-4-01		
		DRAWN : DS. YAMAKOSHI	08. 03. 07		 			

Dec.1.2021 Copyright 2021 HIROSE ELECTRIC CO., LTD. All Rights Reserved.  
In case of consideration for using Automotive equipment / device which demand high reliability, kindly contact our sales window correspondents.

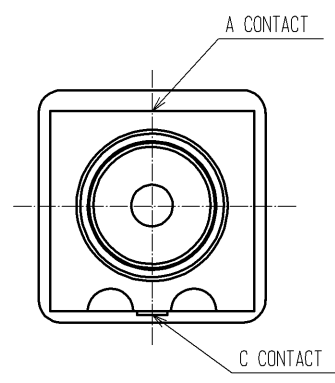
PACKAGING SPECIFICATION



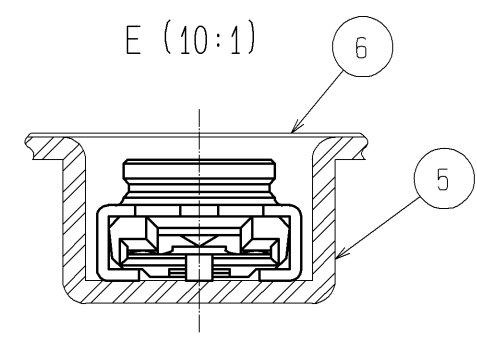
DRAWING OF PACKING  
(100PCS PER REEL)



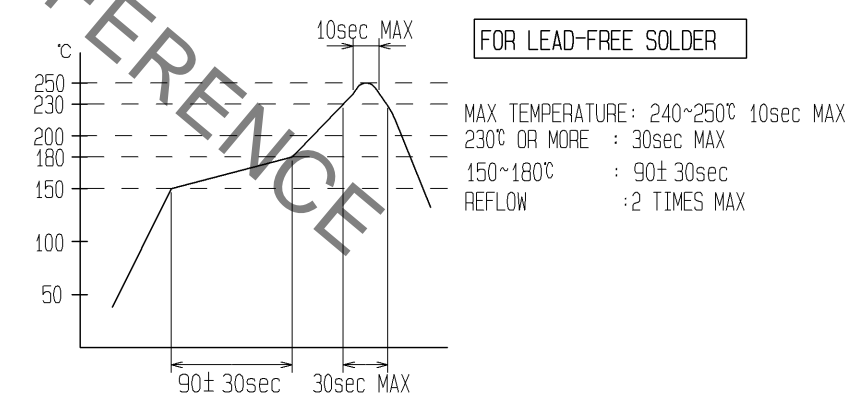
D (10:1)



E (10:1)



RECOMMENDED REFLOW TEMPERATURE PROFILE



HRS	DRAWING NO.	EDC3-180639-04
	PART NO.	MS-156HF(01)
	CODE NO.	CL358-0238-4-01

1

2

2

# Mouser Electronics

Authorized Distributor

Click to View Pricing, Inventory, Delivery & Lifecycle Information:

[Hirose Electric:](#)

[MS-156HF\(01\)](#)