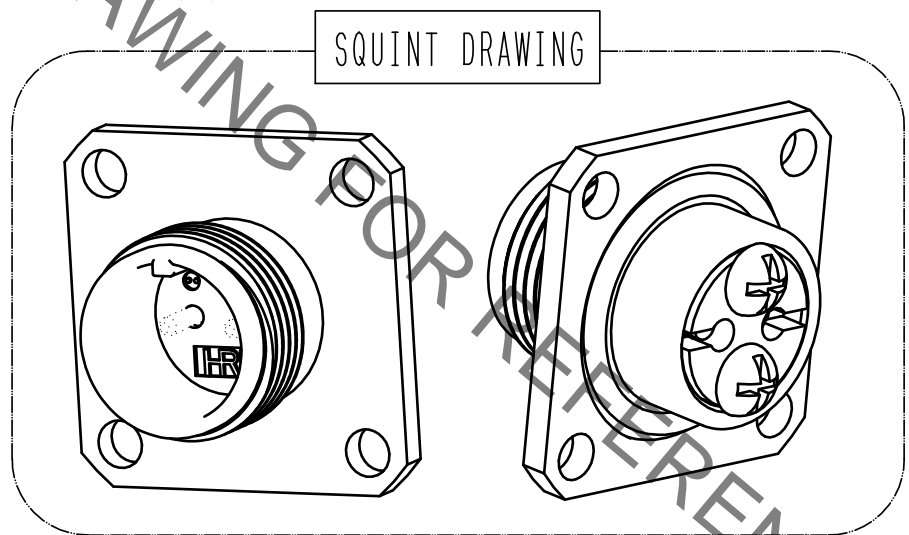
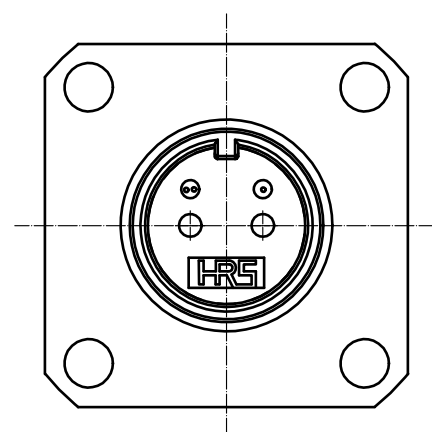
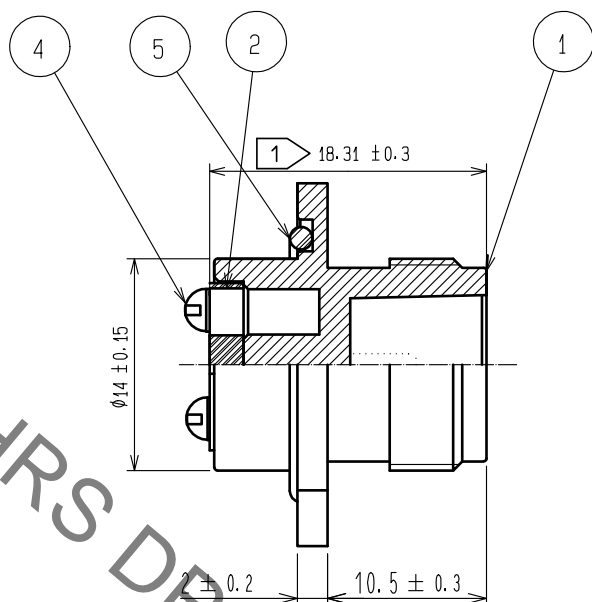
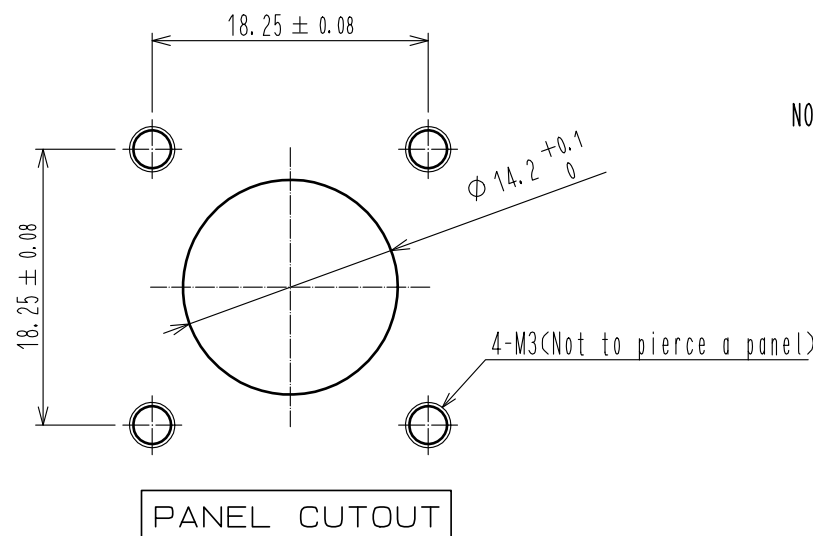
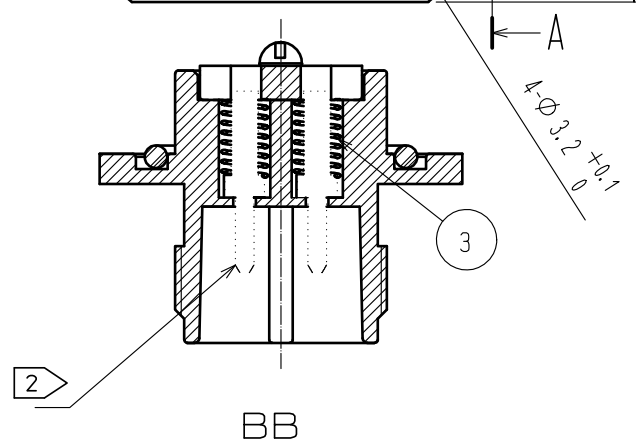
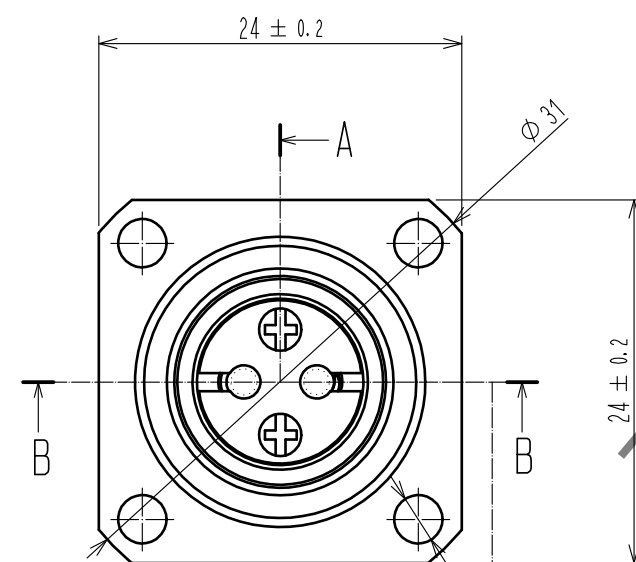
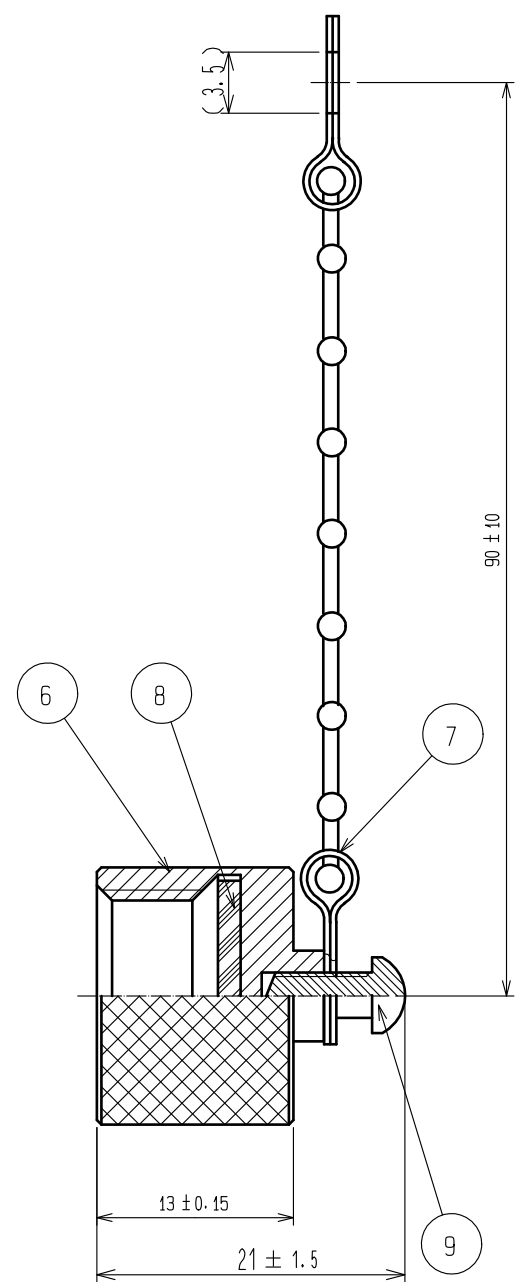


May.1.2021 Copyright 2021 HIROSE ELECTRIC CO., LTD. All Rights Reserved.
In case of consideration for using Automotive equipment / device which demand high reliability, kindly contact our sales window correspondents.



NOTE 1 THIS DIMENSION SHOWS AFTER ASSEMBLING.
2 THIS PART IS NOT CONTAINED. PLEASE USE AN OPTIONAL MU FERRULE.



Depned on system

5	SYNTHETIC RUBBER				
4	STAINLESS STEEL		9	STAINLESS STEEL	NYELOCK
3	PIANO WIRE	ZINC PLATING	8	SYNTHETIC RUBBER	
2	SYNTHETIC RESIN		7	STAINLESS STEEL	
1	ZINC DIECAST	NICKEL PLATING	6	ALUMINIUM ALLOY	ANODIC OXIDE COATING
NO.	MATERIAL	FINISH . REMARKS	NO.	MATERIAL	FINISH . REMARKS
UNITS mm		SCALE 2 : 1	COUNT 1	DESCRIPTION OF REVISIONS DIS-K-00001425	DESIGNED TY. SATO
HIROSE ELECTRIC CO., LTD.		APPROVED : MT. SHIBUTANI	18. 03. 16	DRAWING NO.	EDC-176610-34-00
		CHECED : FS. YOSHIDA	18. 03. 16	PART NO.	MF10S-WDRFNG01-0200(34)
		DESIGNED : SI. MATSUMOTO	18. 03. 16	CODE NO.	CL709-0549-7-34
		DRAWN : SR. TOYOKAWA	18. 03. 16		
		DATE	18. 03. 26		

Mouser Electronics

Authorized Distributor

Click to View Pricing, Inventory, Delivery & Lifecycle Information:

[Hirose Electric:](#)

[MF10S-WDRFNG01-0200\(34\)](#)