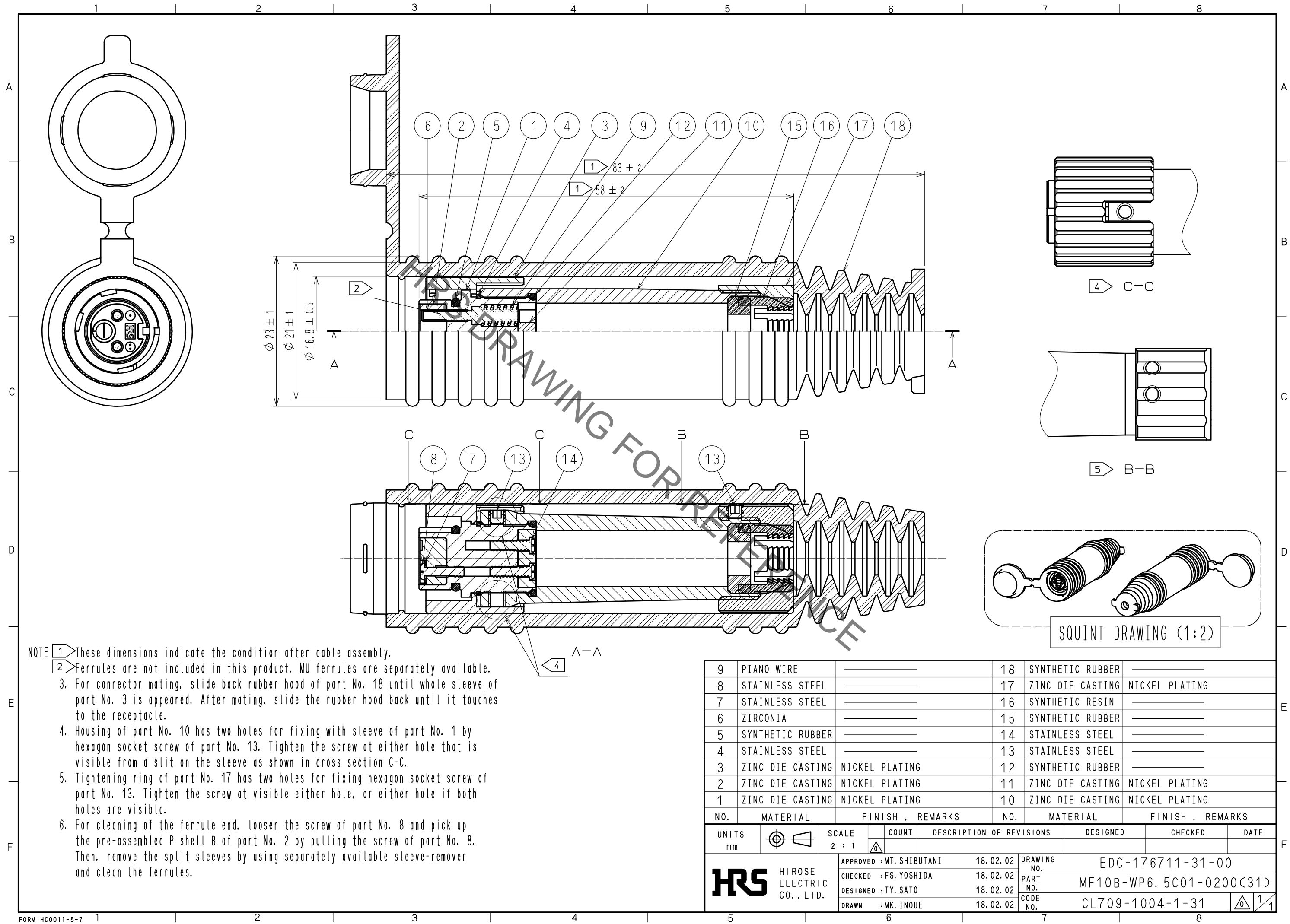


Jun.1.2021 Copyright 2021 HIROSE ELECTRIC CO., LTD. All Rights Reserved.
In case of consideration for using Automotive equipment / device which demand high reliability, kindly contact our sales window correspondents.



- NOTE
- 1 These dimensions indicate the condition after cable assembly.
 - 2 Ferrules are not included in this product. MU ferrules are separately available.
 - 3. For connector mating, slide back rubber hood of part No. 18 until whole sleeve of part No. 3 is appeared. After mating, slide the rubber hood back until it touches to the receptacle.
 - 4. Housing of part No. 10 has two holes for fixing with sleeve of part No. 1 by hexagon socket screw of part No. 13. Tighten the screw at either hole that is visible from a slit on the sleeve as shown in cross section C-C.
 - 5. Tightening ring of part No. 17 has two holes for fixing hexagon socket screw of part No. 13. Tighten the screw at visible either hole, or either hole if both holes are visible.
 - 6. For cleaning of the ferrule end, loosen the screw of part No. 8 and pick up the pre-assembled P shell B of part No. 2 by pulling the screw of part No. 8. Then, remove the split sleeves by using separately available sleeve-remover and clean the ferrules.

9	PIANO WIRE		18	SYNTHETIC RUBBER	
8	STAINLESS STEEL		17	ZINC DIE CASTING	NICKEL PLATING
7	STAINLESS STEEL		16	SYNTHETIC RESIN	
6	ZIRCONIA		15	SYNTHETIC RUBBER	
5	SYNTHETIC RUBBER		14	STAINLESS STEEL	
4	STAINLESS STEEL		13	STAINLESS STEEL	
3	ZINC DIE CASTING	NICKEL PLATING	12	SYNTHETIC RUBBER	
2	ZINC DIE CASTING	NICKEL PLATING	11	ZINC DIE CASTING	NICKEL PLATING
1	ZINC DIE CASTING	NICKEL PLATING	10	ZINC DIE CASTING	NICKEL PLATING
NO.	MATERIAL	FINISH . REMARKS	NO.	MATERIAL	FINISH . REMARKS
UNITS mm					
SCALE 2 : 1		COUNT	DESCRIPTION OF REVISIONS		
APPROVED : MT. SHIBUTANI		18.02.02	DRAWING NO. EDC-176711-31-00		
CHECKED : FS. YOSHIDA		18.02.02	PART NO. MF10B-WP6. 5C01-0200(31)		
DESIGNED : TY. SATO		18.02.02	CODE NO. CL709-1004-1-31		
DRAWN : MK. INOUE		18.02.02			

Mouser Electronics

Authorized Distributor

Click to View Pricing, Inventory, Delivery & Lifecycle Information:

[Hirose Electric:](#)

[MF10B-WP6.5C01-0200\(31\)](#)