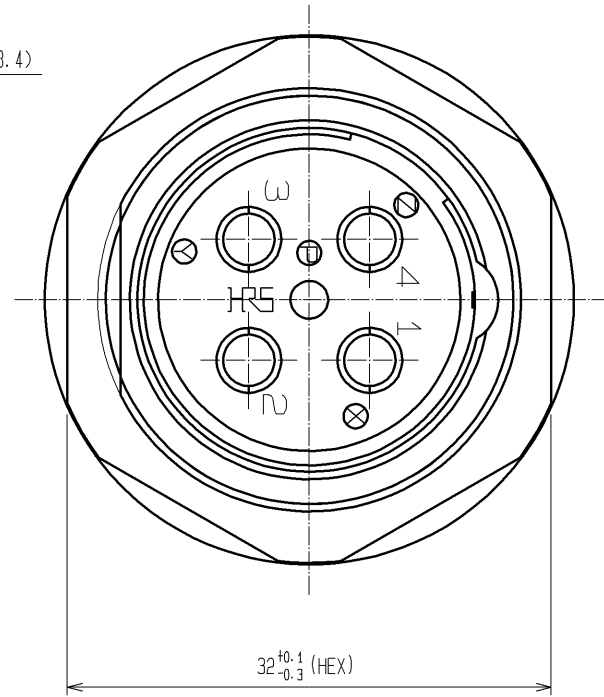
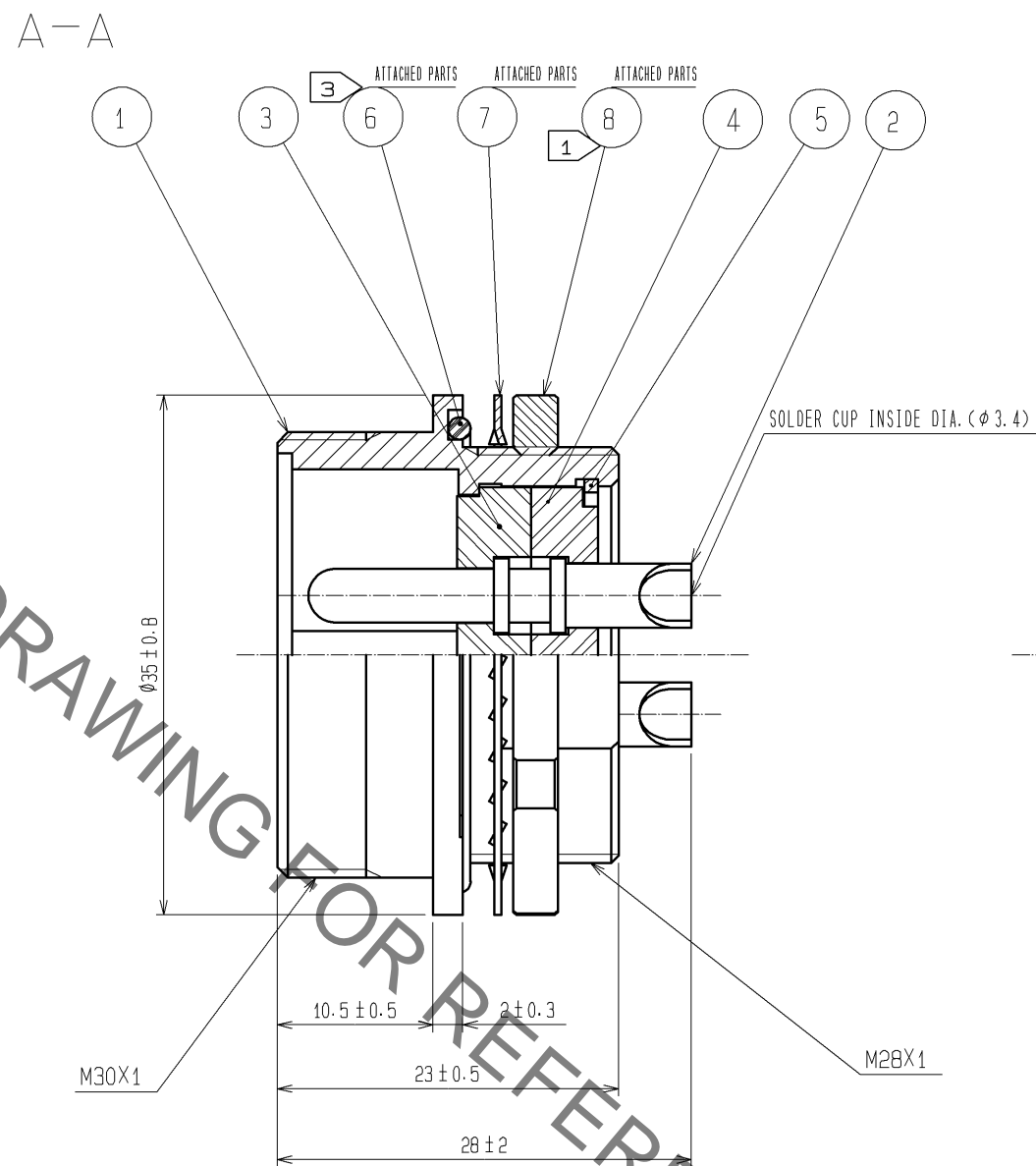
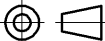


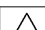


HRS DRAWING FOR REFERENCE



- NOTES
- ① THE RECOMMENDED TIGHTENING TORQUE OF REF. NO. ③ SHALL BE 2 TO 4N · m.
  - ② ROTATIONAL DIRECTION OF THE SOLDER CUP OF REF. NO. ② SHOWS AN EXAMPLE.
  - ③ WHEN MOUNTED ON CHASSIS, BE CAREFUL THAT REFERENCE NO. ③ IS FITTED INTO THE INDICATES GROOVE ANY BITING.

4	POLYPHENYLENE SULFIDE	(BLACK) UL94V-0	8	BRASS	NICKEL PLATING
3	POLYPHENYLENE SULFIDE	(BLACK) UL94V-0	7	PHOSPHOR BRONZE	NICKEL PLATING
2	BRASS	SILVER PLATING 2μm min.	6	SILICONE RUBBER	(BLACK)
1	ZINC ALLOY	BLACK CHROME PLATING	5	PHOSPHOR BRONZE	NICKEL PLATING
NO.	MATERIAL	FINISH . REMARKS	NO.	MATERIAL	FINISH . REMARKS

UNITS mm			SCALE 2 : 1		COUNT	DESCRIPTION OF REVISIONS	DESIGNED	CHECKED	DATE
 HIROSE ELECTRIC CO., LTD.		APPROVED : EJ. KUNII		13. 09. 09		DRAWING NO.	EDC3-118117-00		
		CHECKED : HY. KISHI		13. 09. 09		PART NO.	JR25WRHA-4P		
		DESIGNED : HK. NAMAI		13. 09. 09		CODE NO.	CL114-1136-9-00		
		DRAWN : HK. NAMAI		13. 09. 09		 1/1			

# Mouser Electronics

Authorized Distributor

Click to View Pricing, Inventory, Delivery & Lifecycle Information:

[Hirose Electric:](#)

[JR25WRHA-4P](#)