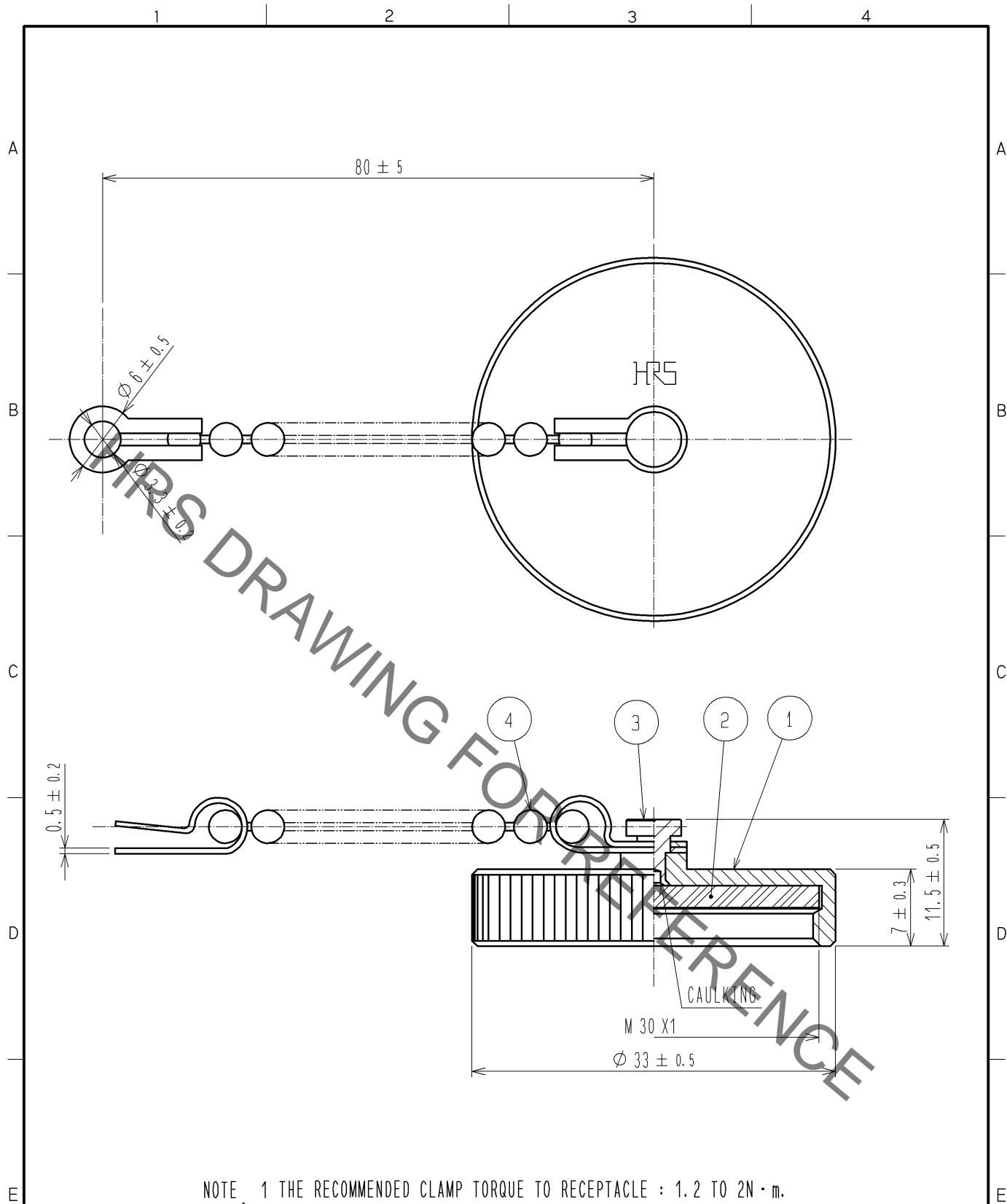


Jan.1.2022 Copyright 2022 HIROSE ELECTRIC CO., LTD. All Rights Reserved.
In case of consideration for using Automotive equipment / device which demand high reliability, kindly contact our sales window correspondents.



NOTE 1 THE RECOMMENDED CLAMP TORQUE TO RECEPTACLE : 1.2 TO 2N · m.

⚠ 2 THIS PRODUCT IS A CAP FOR JR*25WR*-*(*) .

IT IS APPLICABLE REGARDLESS OF GIVEN ALPHABETS AND/OR NUMBERS SHOWN AT *.

2	SILICON RUBBER	(BLACK)	4	STAINLESS	
1	BRASS	BLACK CHROME PLATING	3	BRASS	CHROME PLATING
NO.	MATERIAL	FINISH . REMARKS	NO.	MATERIAL	FINISH . REMARKS
UNITS mm		SCALE 2 : 1	COUNT 1	DESCRIPTION OF REVISIONS DIS-C-002972	DESIGNED WR. AJIRO
		APPROVED : MO. SATOH	08. 03. 25	DRAWING NO. EDC4-115782-00	
		CHECKED : HY. KOBAYASHI	08. 03. 25	PART NO. JR25WRC3	
		DESIGNED : DS. MATSUNE	08. 03. 25	CODE NO. CL114-2172-8-00	
		DRAWN : HN. TANAKA	08. 03. 19		
					1/1

Mouser Electronics

Authorized Distributor

Click to View Pricing, Inventory, Delivery & Lifecycle Information:

[Hirose Electric:](#)

[JR25WRC3](#)