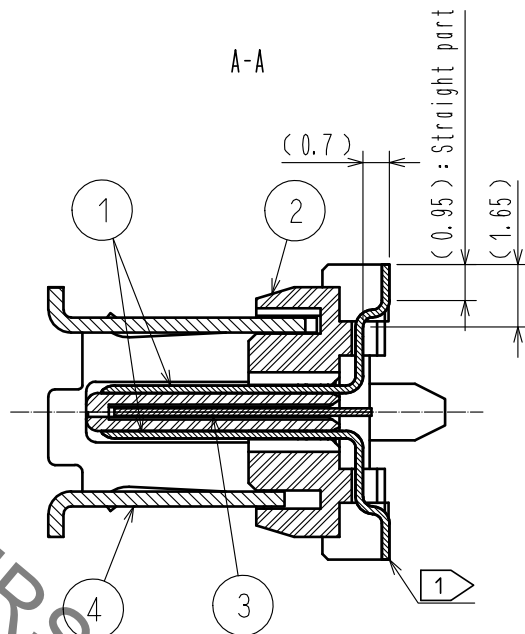
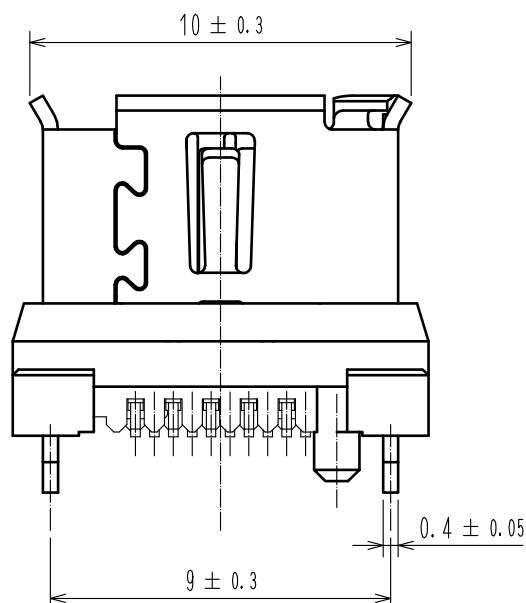
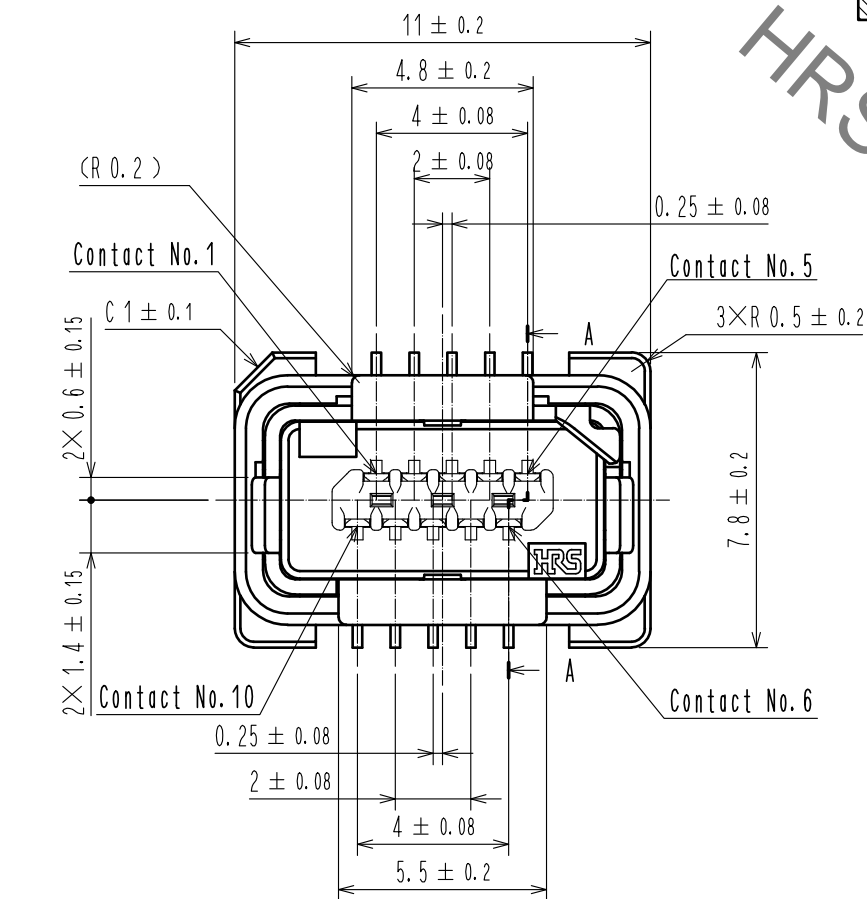
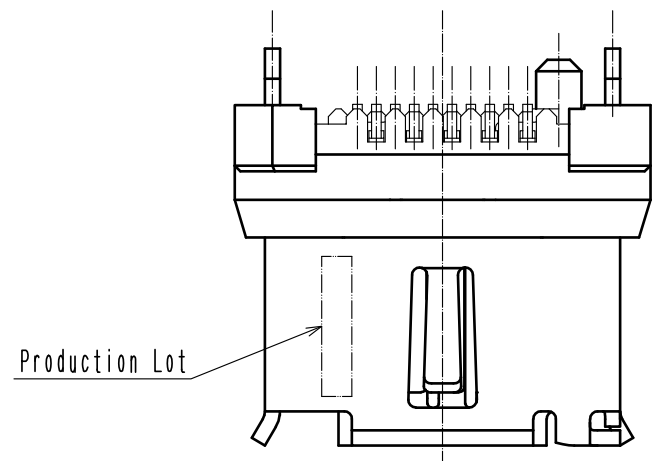
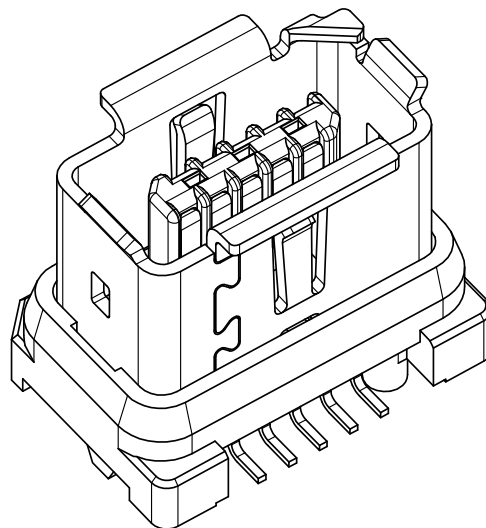


Sep.1.2021 Copyright 2021 HIROSE ELECTRIC CO., LTD. All Rights Reserved.  
In case of consideration for using Automotive equipment / device which demand high reliability, kindly contact our sales window correspondents.



3D image



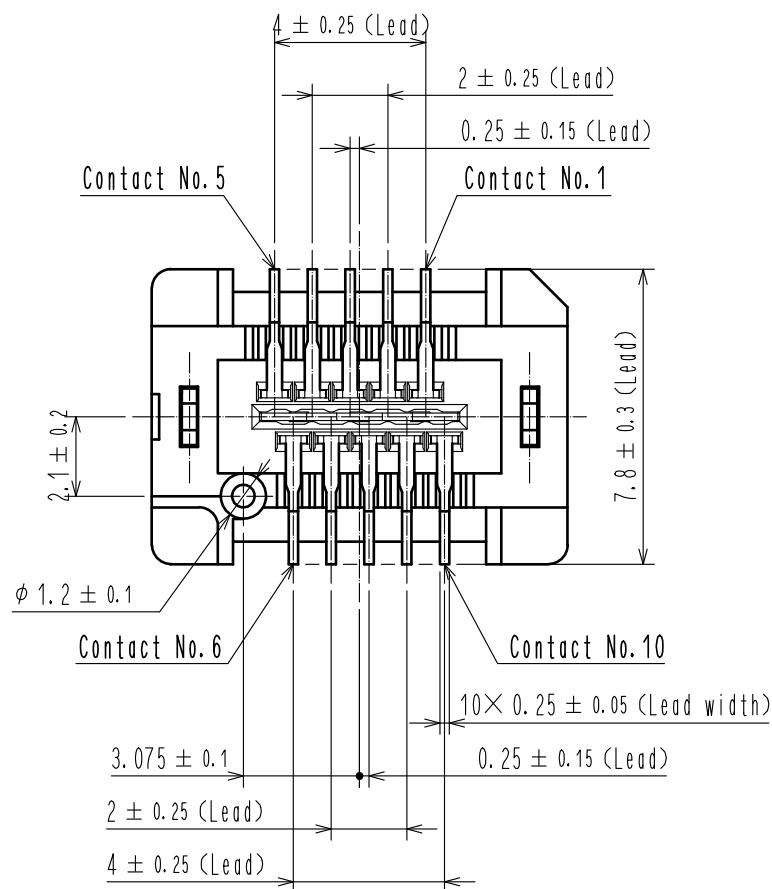
Notes. 1 Co-planarity is within 0.1 mm.

2. As for part No.4 the performance remains good though there might be a difference in the plating luster between each plating lots.

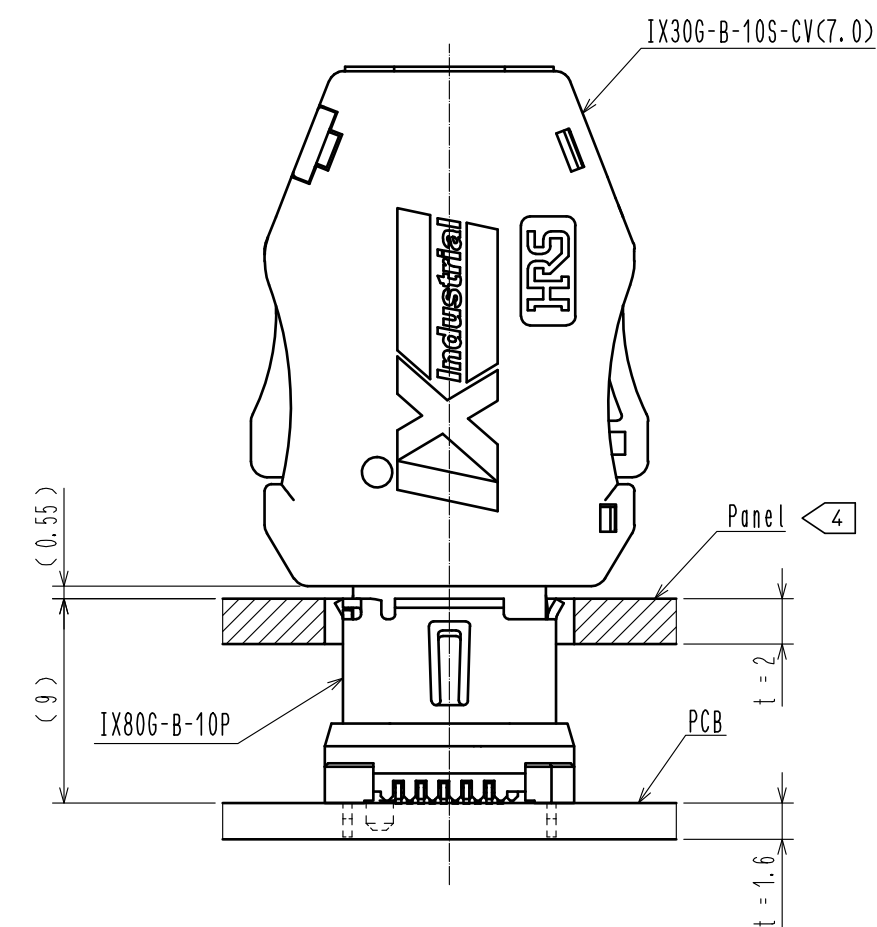
3 Per reel : 450 pcs.  
The vacuum cap (part No.5) is attached to this product at delivery.

4 Refer to the mated condition diagram for the panel thickness and layout.

5. This product is mounted by reflow soldering.  
Refer to specification sheet ELC-129413-00-00 for reflow soldering.




3	Stainless Steel		7	PE	
2	Polyamide	Gray, UL94V-0	6	PS	
1	Copper Alloy	Contact area : Gold 0.2 μm min. Lead area : Gold 0.03 μm min. Under plating : Nickel 2 μm min.	5	Polyamide	Black, UL94V-0
NO.	MATERIAL	FINISH, REMARKS	NO.	Stainless Steel	Surface : Tin 1 μm min. Under plating : Nickel 0.2 μm min.
UNITS mm		SCALE 5 : 1	COUNT 1	DESCRIPTION OF REVISIONS DIS-E-00006693	DESIGNED SN. TOYOSHIMA
HIROSE ELECTRIC CO., LTD.		APPROVED : RI. TAKAYASU	20180423	DRAWING NO.	EDC-129413-00-00
		CHECKED : KI. NAGANUMA	20180420	PART NO.	IX80G-B-10P
		DESIGNED : YS. SAKODA	20180420	CODE NO.	CL0251-0019-0-00
		DRAWN : YS. SAKODA	20180420		
				DATE	20210819
				CHECKED	KI. KAGOTANI
				DATE	20210819



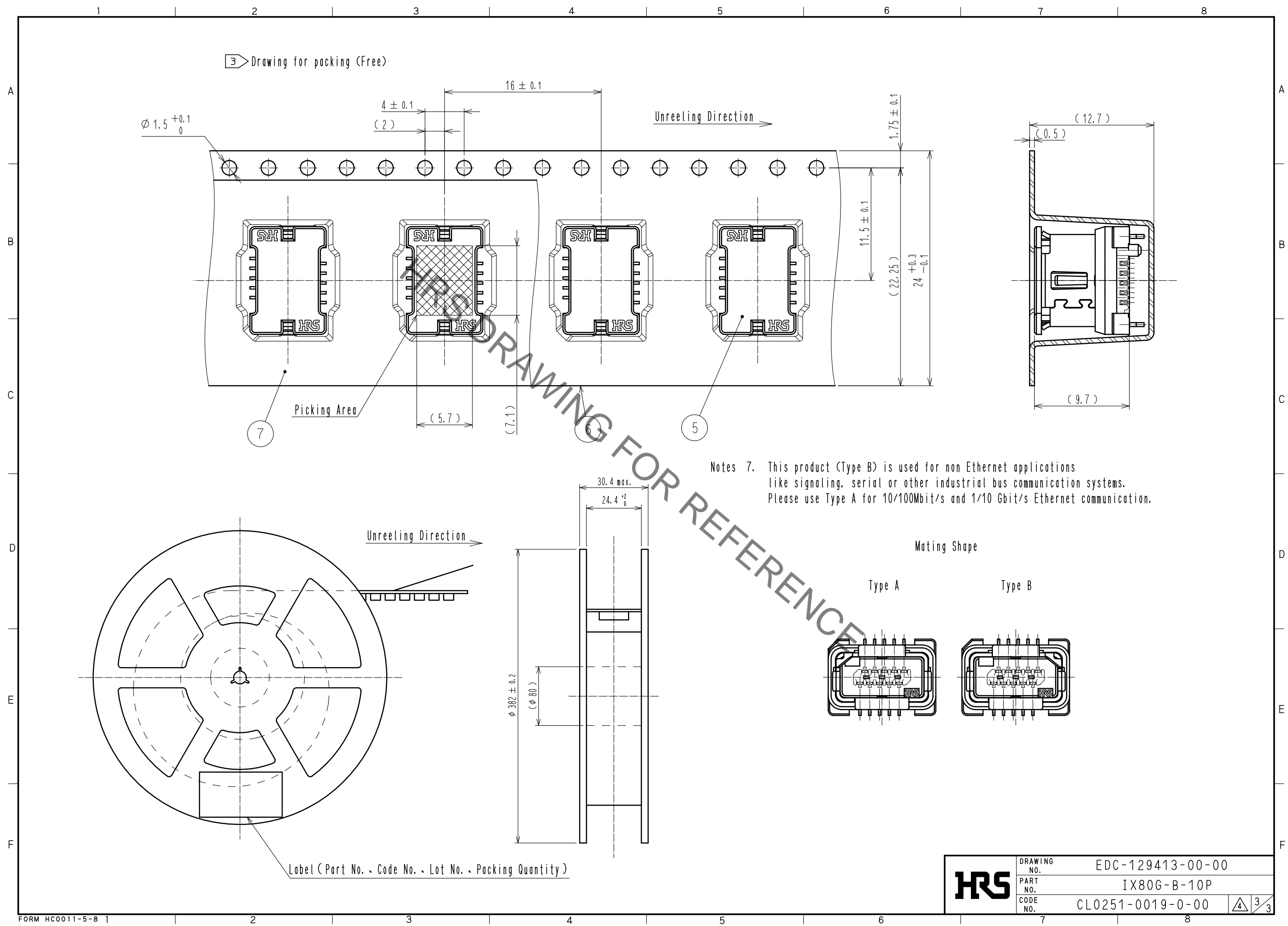
Technical drawing of the rear view of the connector housing. Dimensions shown:

- Overall width: 11
- Central pin width: 6
- Pin pitch:  $8 \times R\ 0.3$
- Pin diameter:  $4 \times R\ 1$
- Housing height: 6.2
- Total height: 7.8



	$\frac{2}{5}$
---	---------------

Sep.1.2021 Copyright 2021 HIROSE ELECTRIC CO., LTD. All Rights Reserved.  
In case of consideration for using Automotive equipment / device which demand high reliability, kindly contact our sales window correspondents.



# Mouser Electronics

Authorized Distributor

Click to View Pricing, Inventory, Delivery & Lifecycle Information:

[Hirose Electric:](#)

[IX80G-B-10P](#)