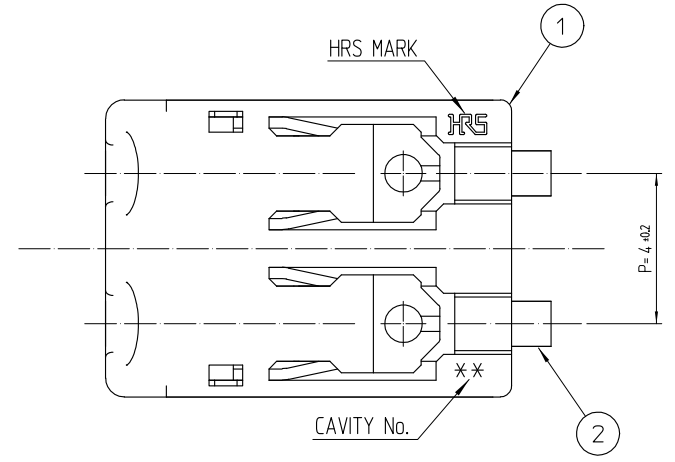
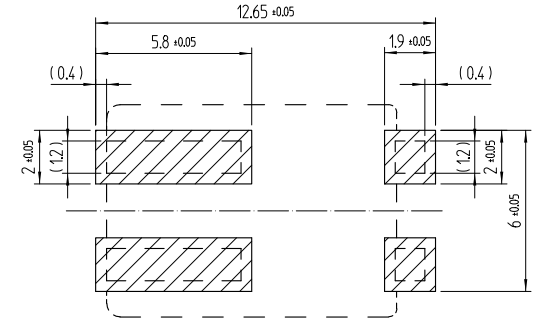


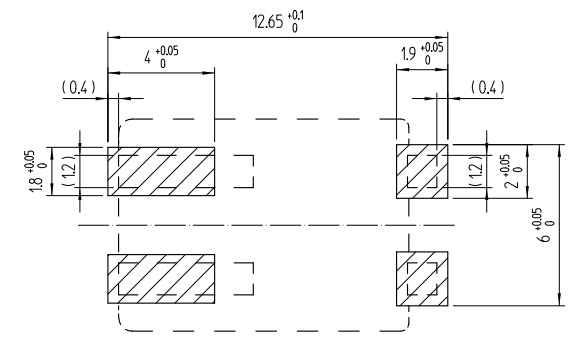
| △數    |  | 訂正事項                     |  |  | 擔當 |   | 檢圖   |      | 年月日 |  | △數    |  | 訂正事項                     |  |  | 擔當 |   | 檢圖   |      | 年月日 |  |
|-------|--|--------------------------|--|--|----|---|------|------|-----|--|-------|--|--------------------------|--|--|----|---|------|------|-----|--|
| COUNT |  | DESCRIPTION OF REVISIONS |  |  | B  | Y | CHKD | DATE |     |  | COUNT |  | DESCRIPTION OF REVISIONS |  |  | B  | Y | CHKD | DATE |     |  |
| △     |  |                          |  |  |    |   |      |      |     |  | △     |  |                          |  |  |    |   |      |      |     |  |
| △     |  |                          |  |  |    |   |      |      |     |  | △     |  |                          |  |  |    |   |      |      |     |  |
| △     |  |                          |  |  |    |   |      |      |     |  | △     |  |                          |  |  |    |   |      |      |     |  |



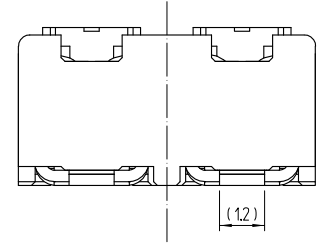
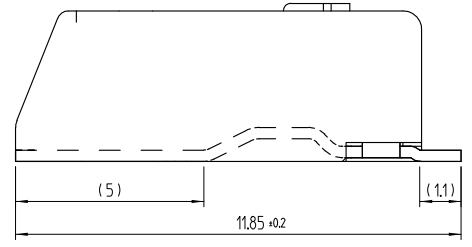
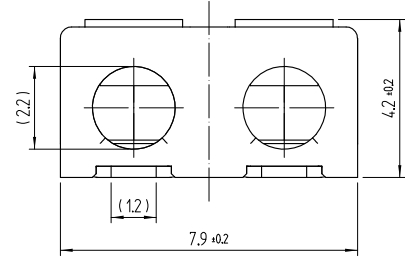
RECOMMENDED PCB LAYOUT  
(MOUNTING SURFACE SIDE) (FREE)



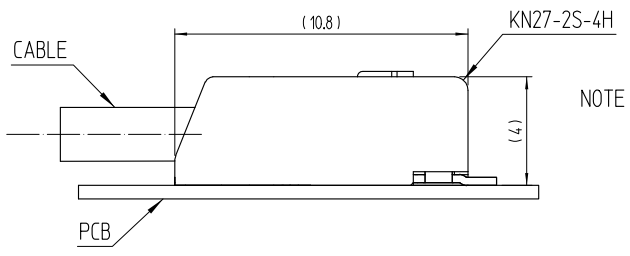
RECOMMENDED METAL MASK (FREE)  
THICKNESS : 0.12mm



DRAWING FOR REFERENCE



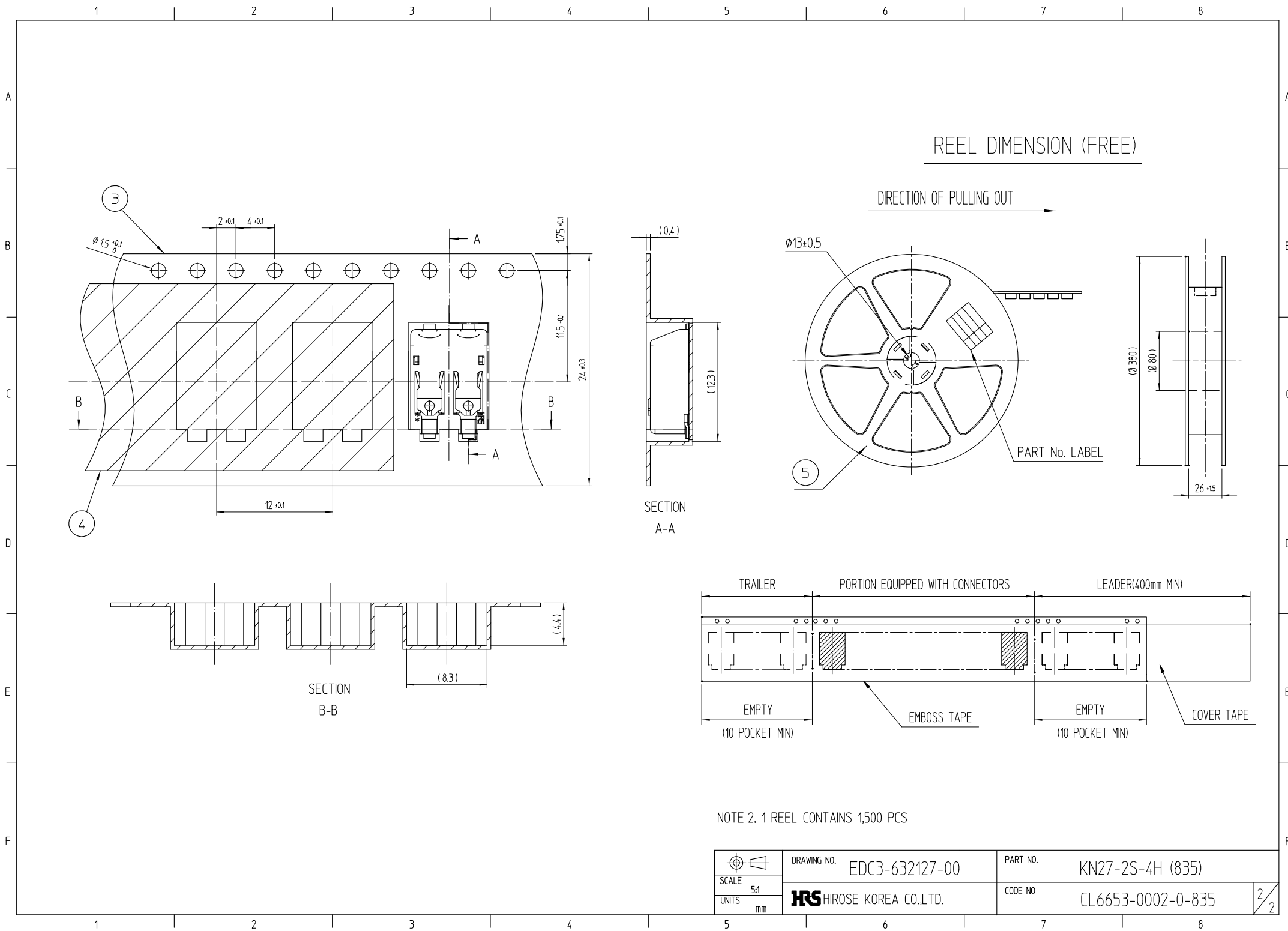
MATING FIGURE (FREE)



NOTE 1. LEAD CO-PLANARITY SHALL BE 0.1mm MAX  
2. UL(File No. E132750) AUTHORIZATION ARTICLE.  
C-UL(File No. E132750) AUTHORIZATION ARTICLE.



| 3              | PS           | EMBOSS CARRIER TAPE |          |                           |                 |                   |                         |
|----------------|--------------|---------------------|----------|---------------------------|-----------------|-------------------|-------------------------|
| 2              | COPPER ALLOY | SnP                 | 5        | PS                        | REEL            |                   |                         |
| 1              | LCP          | UL94-V0, NATURAL    | 4        | PET                       | COVER TAPE      |                   |                         |
| NO.            | MATERIAL     | FINISH, REMARKS     | NO.      | MATERIAL                  | FINISH, REMARKS |                   |                         |
| CODE NO. (OLD) |              |                     | DRAWN    | DESIGNED                  | CHECKED         | APPROVED          | RELEASED                |
|                |              |                     | S.H.GU   | S.H.GU                    | Y.SHA           | T.S.KANG          | ENG<br>16.07.13<br>DEPT |
|                |              |                     | 15.05.08 | 15.05.08                  | 15.05.08        | 15.05.09          |                         |
| DRAWING NO.    |              | EDC3-632127-00      |          | PART NO.                  |                 | KN27-2S-4H (835)  |                         |
| SCALE          |              | 5x1                 |          | CODE NO.                  |                 | CL6653-0002-0-835 |                         |
| UNITS          |              | mm                  |          | HRS HIROSE KOREA CO.,LTD. |                 | 1/2               |                         |



REEL DIMENSION (FREE)

DIRECTION OF PULLING OUT

SECTION A-A

SECTION B-B

NOTE 2. 1 REEL CONTAINS 1500 PCS

|       |             |                       |          |                   |
|-------|-------------|-----------------------|----------|-------------------|
|       | DRAWING NO. | EDC3-632127-00        | PART NO. | KN27-2S-4H (835)  |
|       | SCALE       | 5:1                   | CODE NO  | CL6653-0002-0-835 |
| UNITS | mm          | HIROSE KOREA CO.,LTD. |          | 2/2               |

# Mouser Electronics

Authorized Distributor

Click to View Pricing, Inventory, Delivery & Lifecycle Information:

[Hirose Electric:](#)

[KN27-2S-4H\(835\)](#)