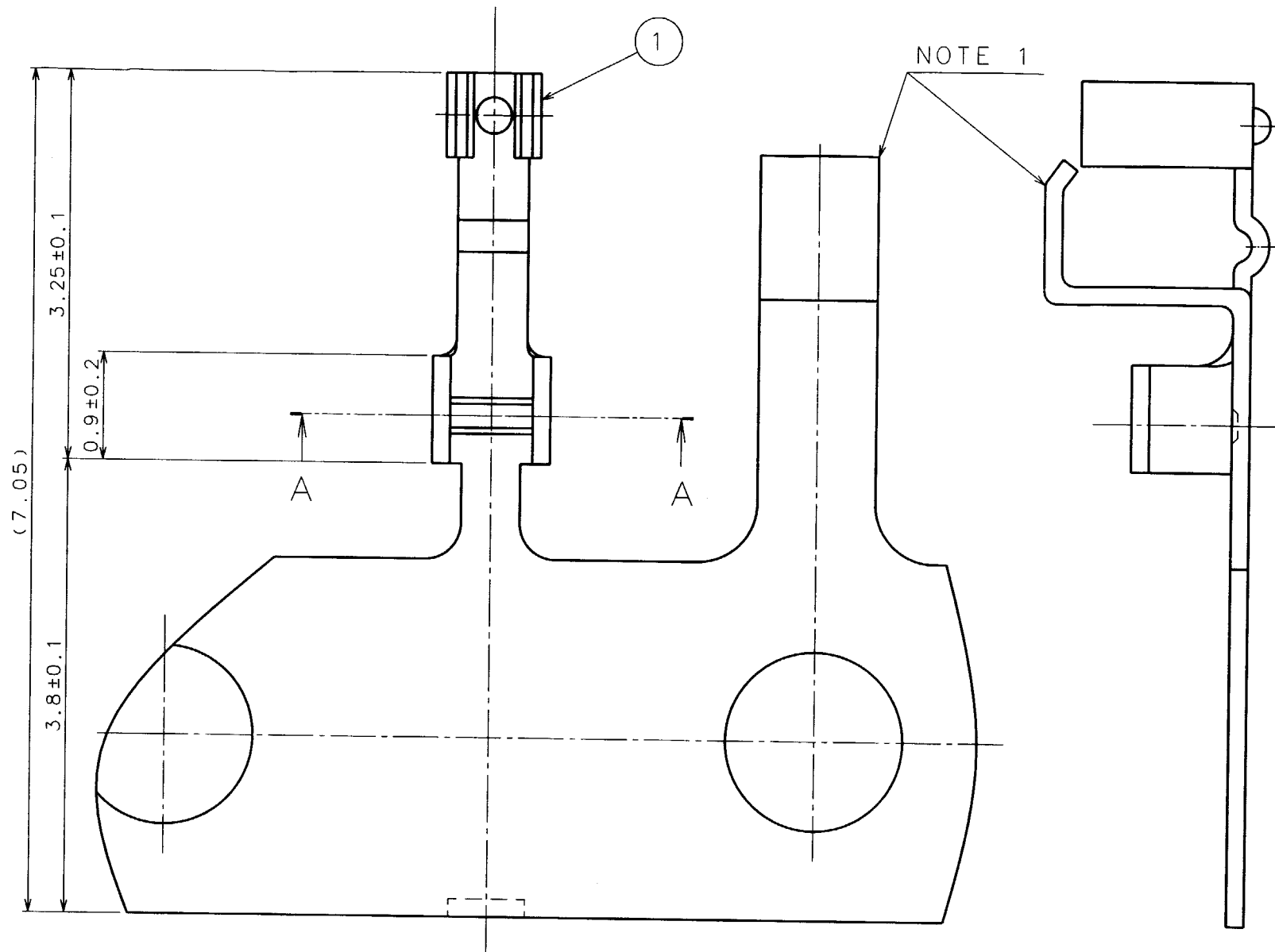


COUNT	DESCRIPTION OF REVISIONS	BY	CHKD	DATE	COUNT	DESCRIPTION OF REVISIONS	BY	CHKD	DATE
△					△				
△					△				

APPLICABLE STANDARD		OPERATING TEMPERATURE RANGE		-40°C TO +90°C(90%RH MAX)		STORAGE TEMPERATURE RANGE		-40°C TO +90°C(90%RH MAX)	
RATING	POWER	—W		CHARACTERISTIC IMPEDANCE		—Ω (— TO — GHz)			
	PECULIARITY	---		APPLICABLE CABLE		DFS111-UL1979 :JUNKOSHA CO.,LTD. CO-6F·FH-SB :HITACHI CABLE,LTD 0.8DS-PBE:SUMITOMO ELECTRIC INDUSTRIES,LTD.			

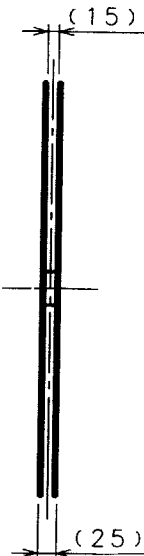
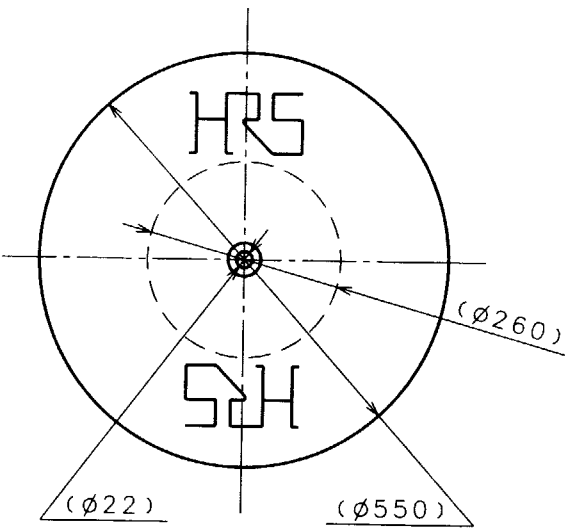
SPECIFICATIONS						
ITEM	TEST METHOD	REQUIREMENTS	QT	AT		
CONSTRUCTION						
GENERAL EXAMINATION	VISUALLY AND BY MEASURING INSTRUMENT.	ACCORDING TO DRAWING.	○	○		
MARKING	CONFIRMED VISUALLY.		-	-		
ELECTRIC CHARACTERISTICS						
CONTACT RESISTANCE	1 0 mA MAX (DC OR 1000 Hz).	CENTER CONTACT 2 0 mΩ MAX. OUTER CONTACT — mΩ MAX.	○	—		
INSULATION RESISTANCE	— V DC.	— MΩ MIN.	-	-		
VOLTAGE PROOF	— V AC FOR 1 min.CURRENT LEAKAGE 2mA MAX	NO FLASHOVER OR BREAKDOWN.	-	-		
VOLTAGE STANDING WAVE RATIO	FREQUENCY — TO — GHz.	VSWR — MAX.	-	-		
INSERTION LOSS	FREQUENCY — TO — GHz	— dB MAX.	-	-		
MECHANICAL CHARACTERISTICS						
CONTACT INSERTION AND EXTRACTION FORCES	φ 0.475 ⁰ / _{-0.004} BY STEEL GAUGE.	INSERTION FORCE — N MAX. EXTRACTION FORCE 0.2 N MIN.	-	○		
INSERTION AND WITHDRAWAL FORCES	MEASURED BY APPLICABLE CONNECTOR.	INSERTION FORCE — N MAX. EXTRACTION FORCE — N MIN.	-	-		
MECHANICAL OPERATION	5 0 TIMES INSERTIONS AND EXTRACTIONS. (400-600 cycles per hour)	① CONTACT RESISTANCE: CENTER CONTACT 2 5 mΩ MAX. OUTER CONTACT — mΩ MAX. ② NO DAMAGE, CRACK AND LOOSENESS OF PARTS.	○	-		
VIBRATION	FREQUENCY — TO — Hz SINGLE AMPLITUDE — mm, — m/s ² AT — CYCLES FOR DIRECTIONS.	① NO ELECTRICAL DISCONTINUITY OF — μs. ② NO DAMAGE, CRACK AND LOOSENESS OF PARTS.	-	-		
SHOCK	— m/s ² DIRECTIONS OF PULSE — ms AT — TIMES FOR — DIRECTIONS.		-	-		
CABLE CLAMP ROBUSTNESS (AGAINST CABLE PULL)	APPLYING A PULL FORCE THE CABLE AXIALLY AT 1 0 N MAX.	① NO WITHDRAWAL AND BREAKAGE OF CABLE. ② NO BREAKAGE OF CLAMP.	○	-		
ENVIRONMENTAL CHARACTERISTICS						
DAMP HEAT,CYCLIC	EXPOSED AT — TO — °C, — % TOTAL — CYCLES (— h)	① INSULATION RESISTANCE: — MΩ MIN. (AT HIGH HUMIDITY) ② INSULATION RESISTANCE: — MΩ MIN (AT DRY) ③ NO DAMAGE, CRACK AND LOOSENESS OF PARTS.	-	-		
RAPID CHANGE OF TEMPERATURE	TEMPERATURE — → — → — → — °C TIME — → — → — → — min. UNDER — CYCLES.	NO DAMAGE, CRACK AND LOOSENESS OF PARTS.	-	-		
CORROSION SALT MIST	EXPOSED IN 5 % SALT WATER SPRAY FOR 4 8 h.	NO HEAVY CORROSION.	○	-		
REMARKS						
		DRAWN	DESIGNED	CHECKED	APPROVED	RELEASED
		<i>T. Matsumoto</i>	<i>T. Matsumoto</i>	<i>K. Shimizu</i>	<i>I. Mitani</i>	
		98.7.23	98.7.23	98.7.23	98.7.23	
Unless otherwise specified, refer to JIS C 5402.						
Note QT:Qualification Test AT:Assurance Test ○:Applicable Test						
HS HIROSE ELECTRIC CO., LTD.		SPECIFICATION SHEET		PART NO. H.FL-LP FEMALE CONTACT		
CODE NO.(OLD) CL		DRAWING NO. ELC4-047069		PART NO. CL331-0511-2		1

TO
RF
USA



NOTE 1: THIS PART IS TO PREVENT THE FEMALE CONTACT FROM BEING DAMAGED WHEN THE BAND OF CONTACTS IS WOUND ONTO THE REEL.

② REEL (1:10)



5					6					7					8				
COUNT	DESCRIPTION OF REVISIONS	BY	CHKD	DATE	COUNT	DESCRIPTION OF REVISIONS	BY	CHKD	DATE	COUNT	DESCRIPTION OF REVISIONS	BY	CHKD	DATE	COUNT	DESCRIPTION OF REVISIONS	BY	CHKD	DATE
△				. .	△														. .
△				. .	△														. .
△				. .	△														. .

1	PHOSPHOR BRONZE	CONTACT: GOLD PLATED (n=10000) CARRIER: NICKEL PLATED	2	CARDBOARD	(FEMALE CONTACTS ARE WOUND AROUND THIS REEL)
NO.	MATERIAL	FINISH, REMARKS	NO.	MATERIAL	FINISH, REMARKS
CODE NO. (OLD) CL		DRAWN	DESIGNED	CHECKED	APPROVED
		98.7.22	98.7.22	98.7.23	98.7.23
SCALE 20:1		DRAWING NO. EDC3-047069		PART NO. H.FL-LP FEMALE CONTACT	
UNITS mm		HRS HIROSE ELECTRIC CO., LTD.		CODE NO. CL331-0511-2	
				1/1	

Mouser Electronics

Authorized Distributor

Click to View Pricing, Inventory, Delivery & Lifecycle Information:

[Hirose Electric:](#)

[H.FL-LP](#)