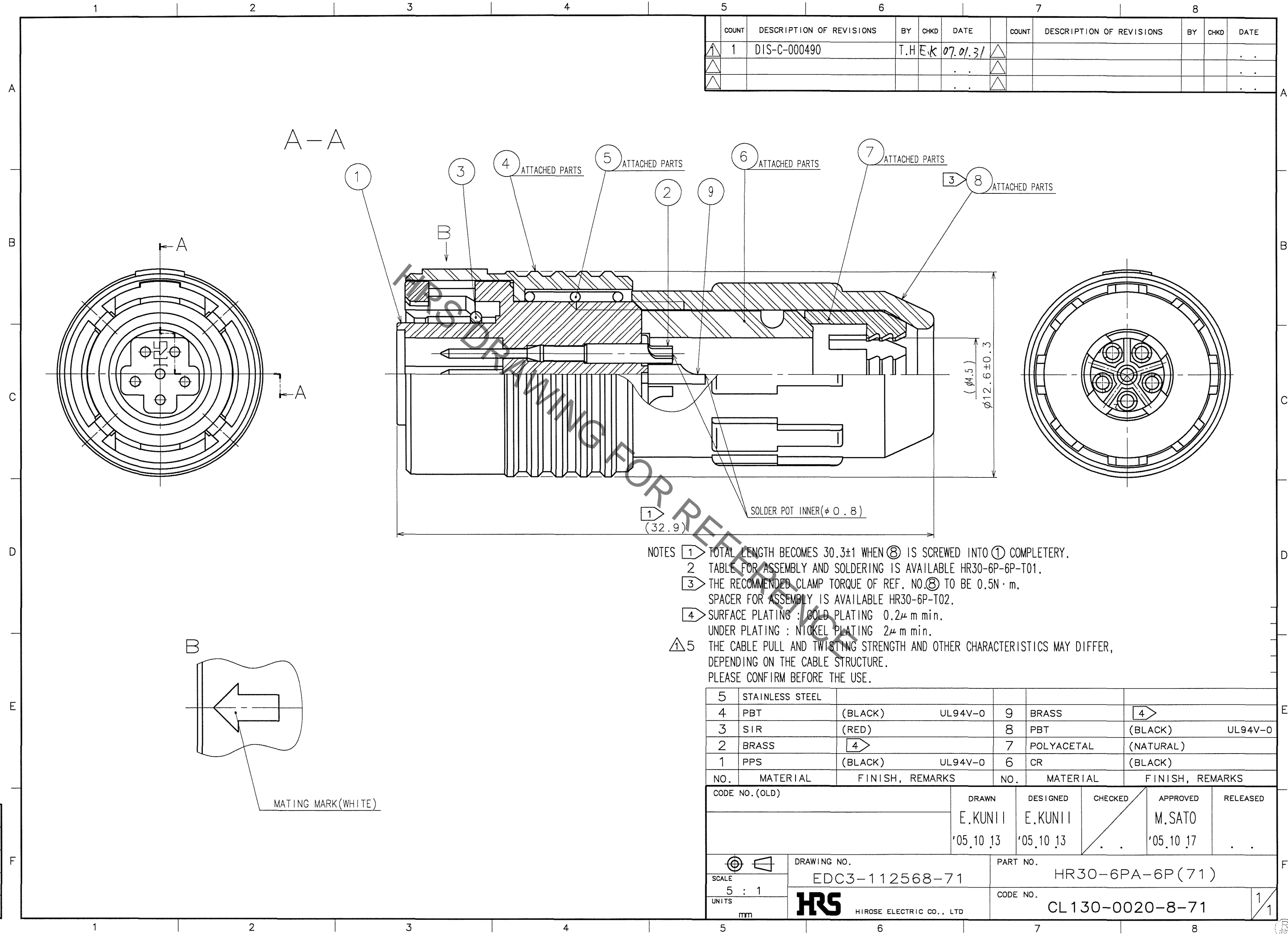


Sep.1.2021 Copyright 2021 HIROSE ELECTRIC CO., LTD. All Rights Reserved.
In case of consideration for using Automotive equipment / device which demand high reliability, kindly contact our sales window correspondents.

TO
R



COUNT	DESCRIPTION OF REVISIONS	BY	CHKD	DATE	COUNT	DESCRIPTION OF REVISIONS	BY	CHKD	DATE
1	DIS-C-000490	T.H.E.K		07.01.31					

- NOTES
- 1 TOTAL LENGTH BECOMES 30.3±1 WHEN 8 IS SCREWED INTO 1 COMPLETERY.
 - 2 TABLE FOR ASSEMBLY AND SOLDERING IS AVAILABLE HR30-6P-6P-T01.
 - 3 THE RECOMMENDED CLAMP TORQUE OF REF. NO.8 TO BE 0.5N·m.
SPACER FOR ASSEMBLY IS AVAILABLE HR30-6P-T02.
 - 4 SURFACE PLATING : GOLD PLATING 0.2μm min.
UNDER PLATING : NICKEL PLATING 2μm min.
 - 5 THE CABLE PULL AND TWISTING STRENGTH AND OTHER CHARACTERISTICS MAY DIFFER,
DEPENDING ON THE CABLE STRUCTURE.
PLEASE CONFIRM BEFORE THE USE.

5	STAINLESS STEEL				
4	PBT	(BLACK)	UL94V-0	9	BRASS
3	SIR	(RED)		8	PBT
2	BRASS	4		7	POLYACETAL
1	PPS	(BLACK)	UL94V-0	6	CR

NO.	MATERIAL	FINISH, REMARKS	NO.	MATERIAL	FINISH, REMARKS
-----	----------	-----------------	-----	----------	-----------------

CODE NO. (OLD)	DRAWN	DESIGNED	CHECKED	APPROVED	RELEASED
	E.KUNII	E.KUNII		M.SATO	
	'05.10.13	'05.10.13		'05.10.17	

SCALE	DRAWING NO.	PART NO.
5 : 1	EDC3-112568-71	HR30-6PA-6P(71)
UNITS	HIROSE ELECTRIC CO., LTD	CODE NO.
mm		CL130-0020-8-71

1/1

Mouser Electronics

Authorized Distributor

Click to View Pricing, Inventory, Delivery & Lifecycle Information:

[Hirose Electric:](#)

[HR30-6PA-6P\(71\)](#)