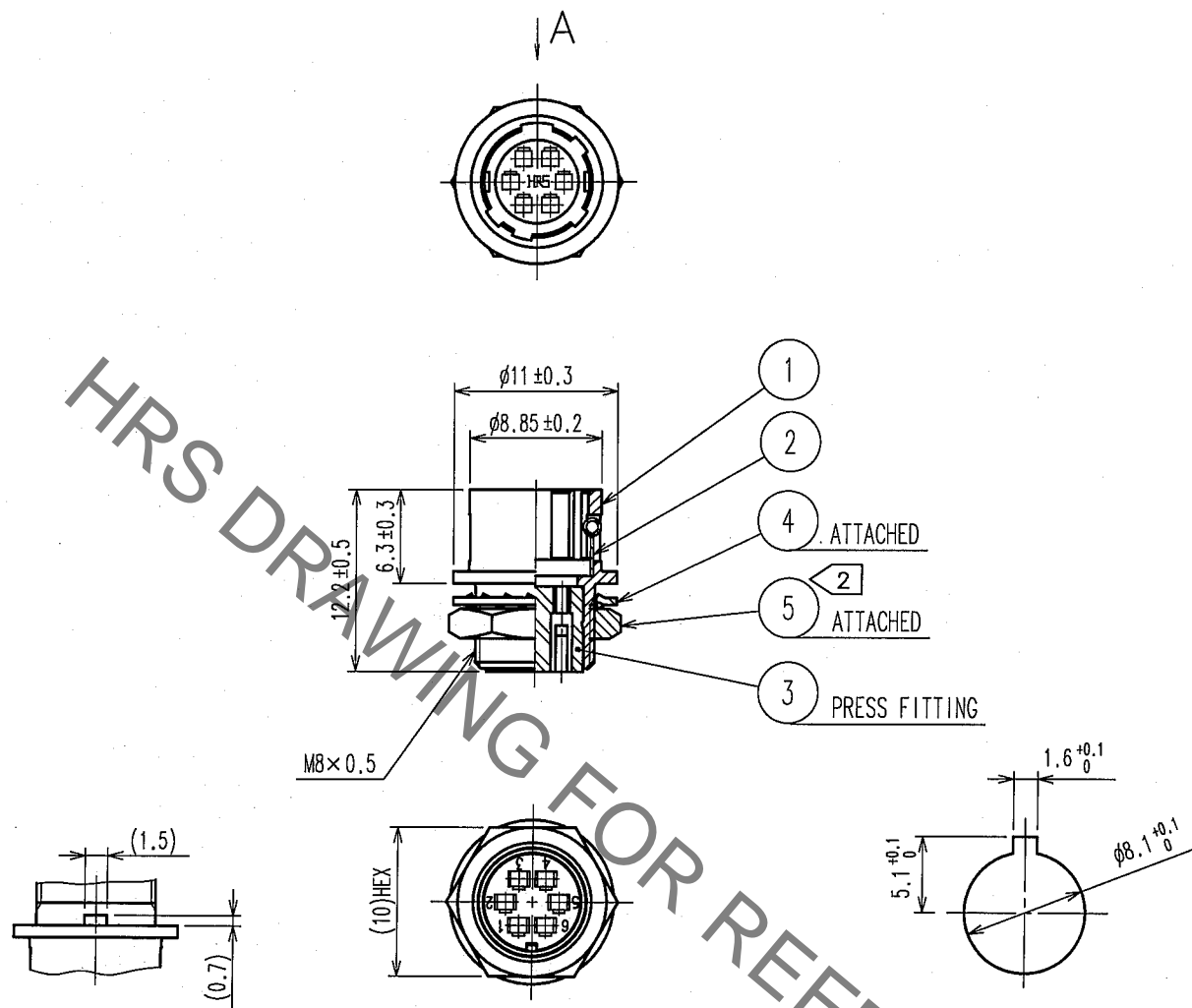


Jan.1.2022 Copyright 2022 HIROSE ELECTRIC CO., LTD. All Rights Reserved.
In case of consideration for using Automotive equipment / device which demand high reliability, kindly contact our sales window correspondents.

1					2					3					4				
COUNT	DESCRIPTION OF REVISIONS				BY	CHKD	DATE			COUNT	DESCRIPTION OF REVISIONS				BY	CHKD	DATE		
△							..			△							..		
△										△							..		
△										△							..		



A DETAIL OF MOUNTING GUIDE

NOTE 1 APPLICABLE CONTACT : HR10-PC-212
APPLICABLE WIRE : AWG#26~30 (INSULATOR OUTER DIA. OF ϕ 1 OR LESS)
APPLICABLE TOOL, EXTRACTOR : RP6-SC-TP
② THE RECOMMENDED CLAMP TORQUE OF REF.NO. ⑤ : 1.5N · m .
LOCTITE 242, HENKEL JAPAN OR EQUIVALENT IS RECOMMENDED TO PREVENT
REF. NO. ⑤ FROM LOOSENING.

3	PBT	(BLACK) UL94V-0			
2	STAINLESS STEEL		5	BRASS	NICKEL PLATING
1	ZINC ALLOY	MATTE FINISH NICKEL PLATED	4	PHOSPHOR BRONZE	NICKEL PLATING
NO.	MATERIAL	FINISH, REMARKS	NO.	MATERIAL	FINISH, REMARKS
CODE NO. (OLD) CL			DRAWN H.Kishi 05.08.29		
			DESIGNED H.Kishi 05.08.29		
			CHECKED E.Kumai 05.08.30		
			APPROVED M.Sato 05.08.30		
			RELEASED		
DRAWING NO. EDC4-025178-73			PART NO. HR10A-7R-6PC(73)		
SCALE 2 : 1			CODE NO. CL110-0507-8-73		
UNITS mm			1/1		

HRS HIROSE ELECTRIC CO., LTD.

Mouser Electronics

Authorized Distributor

Click to View Pricing, Inventory, Delivery & Lifecycle Information:

[Hirose Electric:](#)

[HR10A-7R-6PC\(73\)](#)