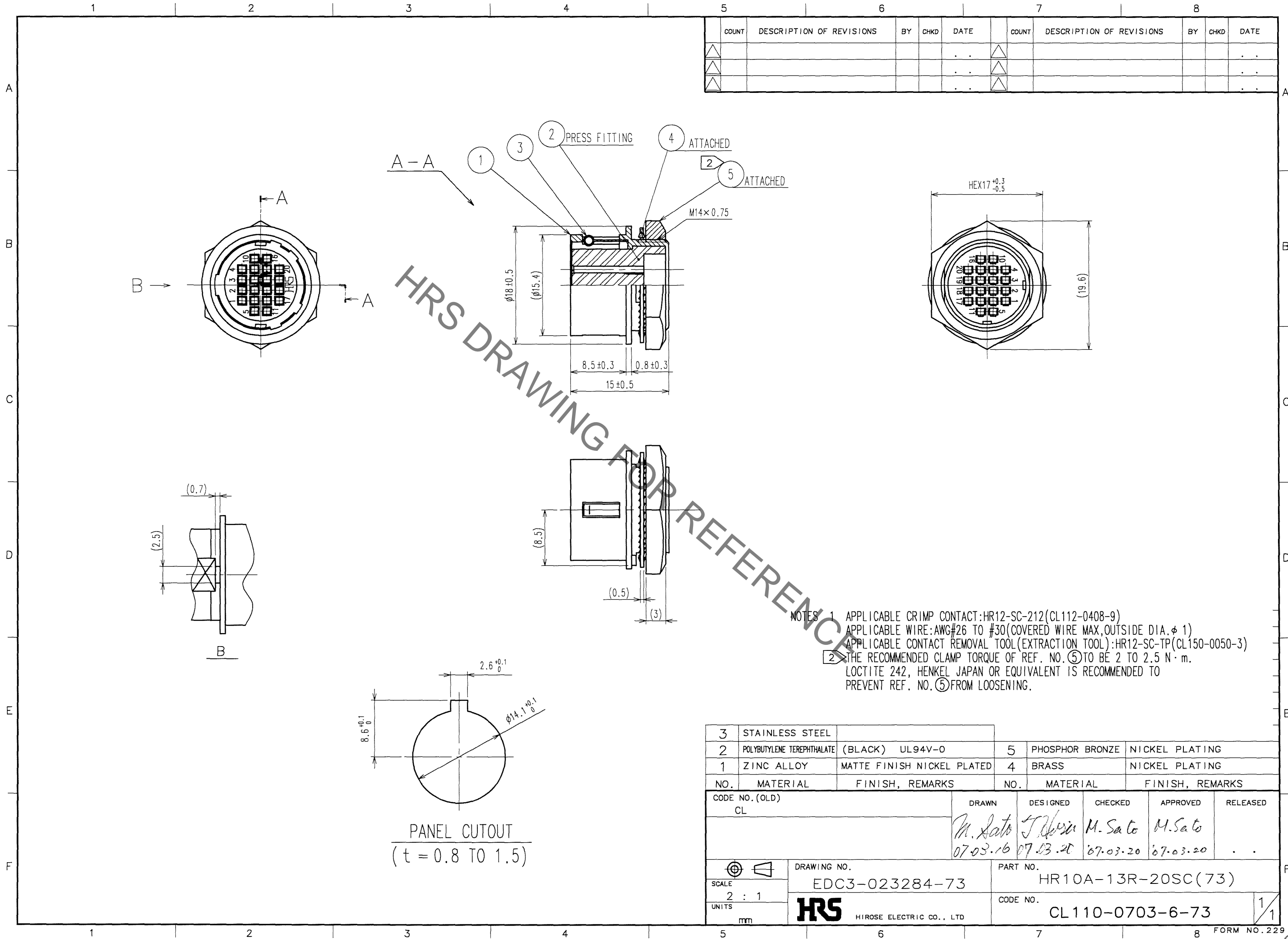


Jan.1.2022 Copyright 2022 HIROSE ELECTRIC CO., LTD. All Rights Reserved.  
In case of consideration for using Automotive equipment / device which demand high reliability, kindly contact our sales window correspondents.

TO
R



NOTES 1 APPLICABLE CRIMP CONTACT:HR12-SC-212(CL112-0408-9)  
APPLICABLE WIRE:AWG#26 TO #30(COVERED WIRE MAX,OUTSIDE DIA.φ 1)  
APPLICABLE CONTACT REMOVAL TOOL(EXTRACTION TOOL):HR12-SC-TP(CL150-0050-3)  
2 THE RECOMMENDED CLAMP TORQUE OF REF. NO. ⑤ TO BE 2 TO 2.5 N·m.  
LOCTITE 242, HENKEL JAPAN OR EQUIVALENT IS RECOMMENDED TO  
PREVENT REF. NO. ⑤ FROM LOOSENING.

3	STAINLESS STEEL		5	PHOSPHOR BRONZE	NICKEL PLATING
2	POLYBUTYLENE TEREPHTHALATE (BLACK)	UL94V-0	4	BRASS	NICKEL PLATING
1	ZINC ALLOY	MATTE FINISH NICKEL PLATED			
NO.	MATERIAL	FINISH, REMARKS	NO.	MATERIAL	FINISH, REMARKS
CODE NO. (OLD) CL			DRAWN	DESIGNED	CHECKED
			M. Sato	T. Hori	M. Sato
			07.03.16	07.03.20	07.03.20
DRAWING NO. EDC3-023284-73			PART NO. HR10A-13R-20SC(73)		
SCALE 2 : 1			CODE NO. CL110-0703-6-73		
UNITS mm			1 1		

# Mouser Electronics

Authorized Distributor

Click to View Pricing, Inventory, Delivery & Lifecycle Information:

[Hirose Electric:](#)

[HR10A-13R-20SC\(73\)](#)