

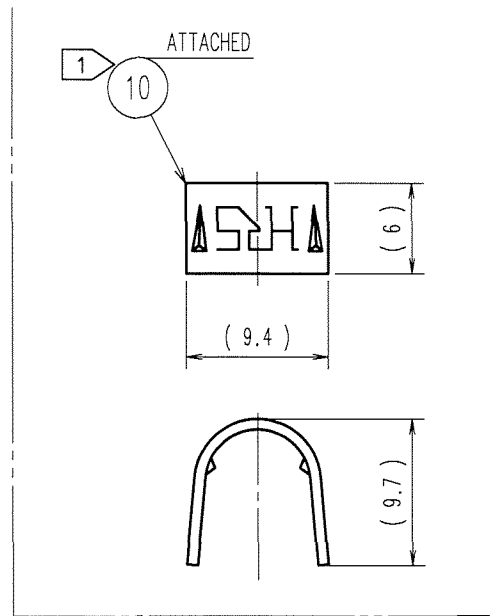
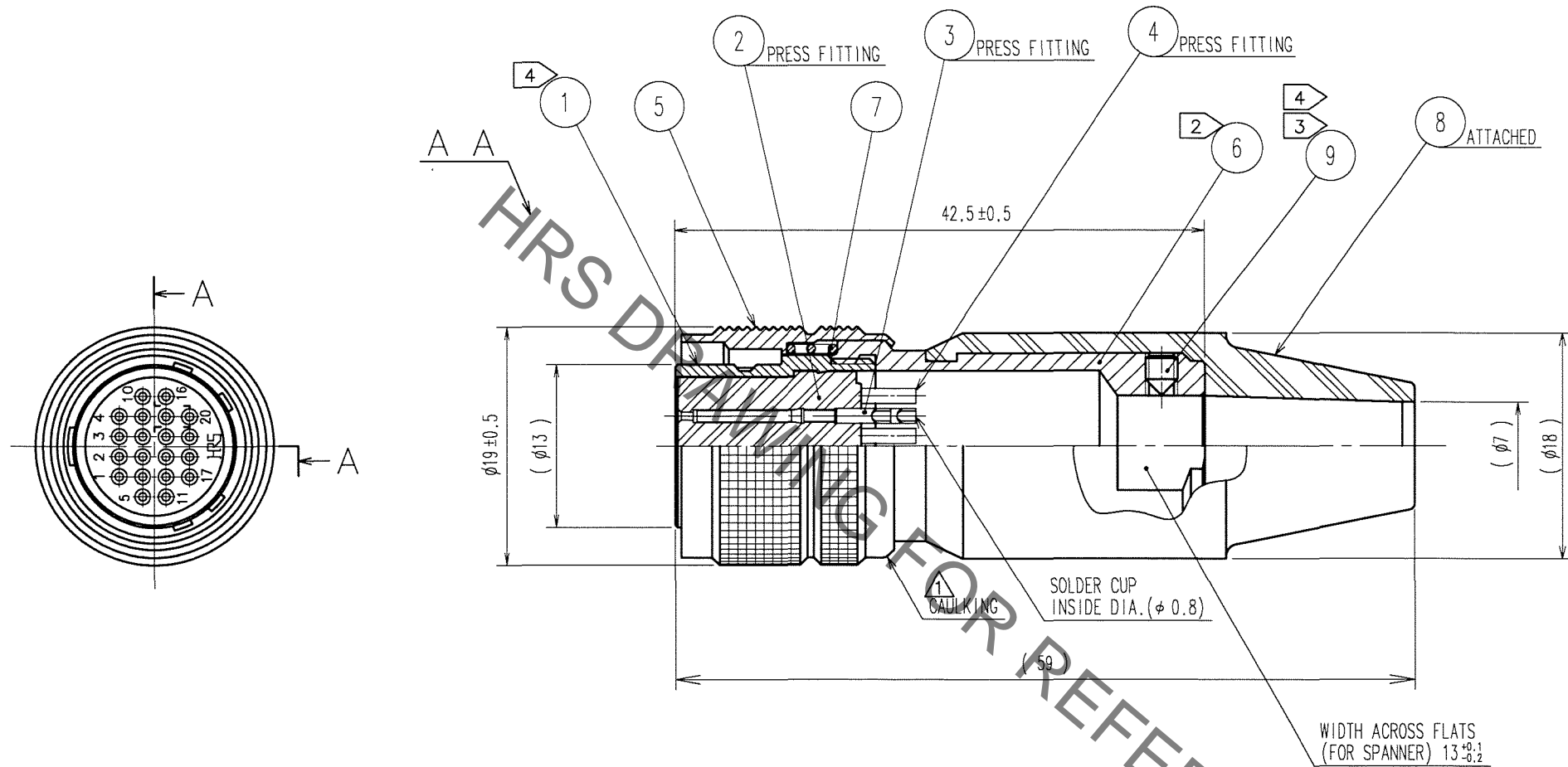
Jan.1.2022 Copyright 2022 HIROSE ELECTRIC CO., LTD. All Rights Reserved.  
In case of consideration for using Automotive equipment / device which demand high reliability, kindly contact our sales window correspondents.

TO
R

A  
B  
C  
D  
E  
F

1 2 3 4 5 6 7 8

COUNT	DESCRIPTION OF REVISIONS	BY	CHKD	DATE	COUNT	DESCRIPTION OF REVISIONS	BY	CHKD	DATE
1	DIS-C-000409	D.M	M.S	06.12.19					



- NOTE: ① HAND CRIMPING TOOL, REF. NO. ⑩ : HR10A-TC-02 (CL150-0041-2)  
THE HOLE DIAMETER FOR CRIMPING :  $\phi 7.0$
- ② THE RECOMMENDED CLAMP TORQUE, REF. NO. ⑥ :  $2-2.5 \text{ N} \cdot \text{m}$ .
- ③ ACROSS FLATS HEXAGON HEAD OF REF. NO. ⑨ : 1.27  
THE RECOMMENDED CLAMP TORQUE, REF. NO. ⑨ :  $0.3-0.4 \text{ N} \cdot \text{m}$ .  
REF. NO. ⑨ SHALL BE TIGHTENED WITH ITS TIPS PRESSED INTO THE DIMPLE AREA OF REF. NO. ⑩.
- ④ LOCTITE 242, HENKEL JAPAN OR EQUIVALENT IS RECOMMENDED TO PREVENT REF. NO. ① AND ⑨ FROM LOOSENING.
- 5 ONE EXAMPLE OF THE ROTATION OF REF. NO. ⑥ TO REF. NO. ① IS SHOWN.

5	BRASS	MATTE FINISH NICKEL PLATED	10	BRASS	
4	BERYLLIUM COPPER	SILVER PLATING 2 $\mu$ m min.	9	STEEL	NICKEL PLATING JIS B 1177 HEXAGON SOCKET SET SCREW M2.6X0.45X3
3			8	CR	(BLACK)
2	POLYAMIDE	(BLACK) UL94V-0	7	STEEL	NICKEL PLATING
1	ZINC ALLOY	MATTE FINISH NICKEL PLATED	6	BRASS	NICKEL PLATING
NO.	MATERIAL	FINISH, REMARKS	NO.	MATERIAL	FINISH, REMARKS
CODE NO. (OLD)			DRAWN	DESIGNED	CHECKED
			D. MATSUNE	D. MATSUNE	E. KUNII
			'05.10.01	'05.10.01	'05.10.03
					'05.10.14
DRAWING NO. EDC3-046520-73			PART NO. HR10A-13P-20S(73)		
SCALE 2 : 1			CODE NO. CL110-0716-8-73		
UNITS mm			1 1		

# Mouser Electronics

Authorized Distributor

Click to View Pricing, Inventory, Delivery & Lifecycle Information:

[Hirose Electric:](#)

[HR10A-13P-20S\(73\)](#)