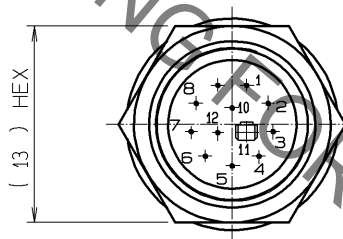
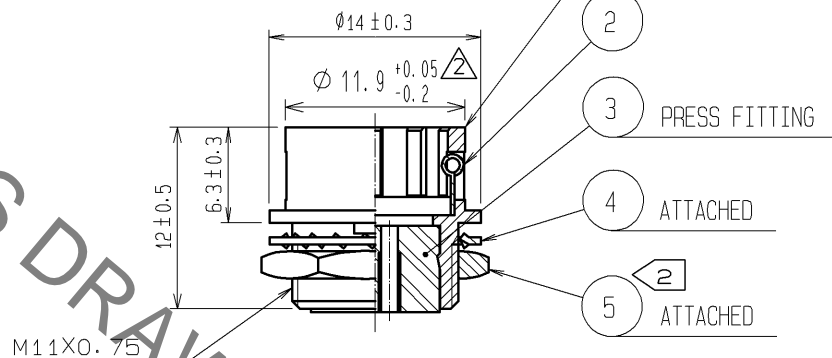
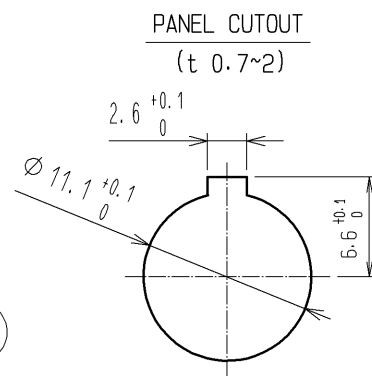
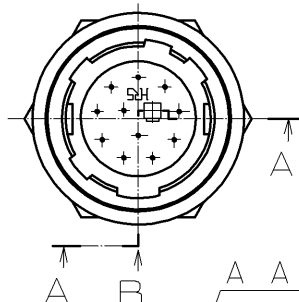
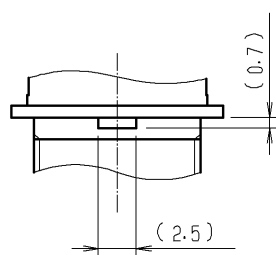

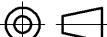





B DETAIL OF MOUNTING GUIDE



- NOTES 1 APPLICABLE CRIMP CONTACT: HR10-PC-212(CL110-0514-3)
(AWG#26 TO #30; INSULATION OUTER DIA Ø1 MAX)
EXTRACTION TOOL: RP6-SC-TP(CL150-0039-0)
- △ 2 THE RECOMMENDED CLAMP TORQUE OF REF.NO. ⑤ : 2N·m
LOCTITE 243, HENKEL JAPAN OR EQUIVALENT IS RECOMMENDED TO
PREVENT REF. NO. ⑤ FROM LOOSENING.

3	POLYBUTYLENE TEREPHTHALATE	(BLACK) UL94V-0					
2	STAINLESS STEEL			5	BRASS 	NICKEL PLATING	
1	ZINC ALLOY	MATTE FINISH NICKEL PLATED		4	PHOSPHOR BRONZE	NICKEL PLATING	
NO.	MATERIAL	FINISH, REMARKS		NO.	MATERIAL	FINISH, REMARKS	
<div>UNITS mm</div> <div></div> <div> HIROSE ELECTRIC CO., LTD.</div>	<div>SCALE 2 : 1</div> <div></div>	COUNT	DESCRIPTION OF REVISIONS		DESIGNED	CHECKED	DATE
		2	DIS-C-003736		HR. SATO	HY. KISHI	14. 11. 25
		APPROVED : MO. SATOH		06. 09. 13	DRAWING NO. EDC4-025181-71		
		CHECKED : EJ. KUNII		06. 09. 11	PART NO. HR10A-10R-12PC(71)		
		DESIGNED : TP. KOMATSU		06. 09. 07	CODE NO. CL110-0607-2-71		
DRAWN : TP. KOMATSU		06. 09. 07					 1/1

Mouser Electronics

Authorized Distributor

Click to View Pricing, Inventory, Delivery & Lifecycle Information:

[Hirose Electric:](#)

[HR10A-10R-12PC\(71\)](#)