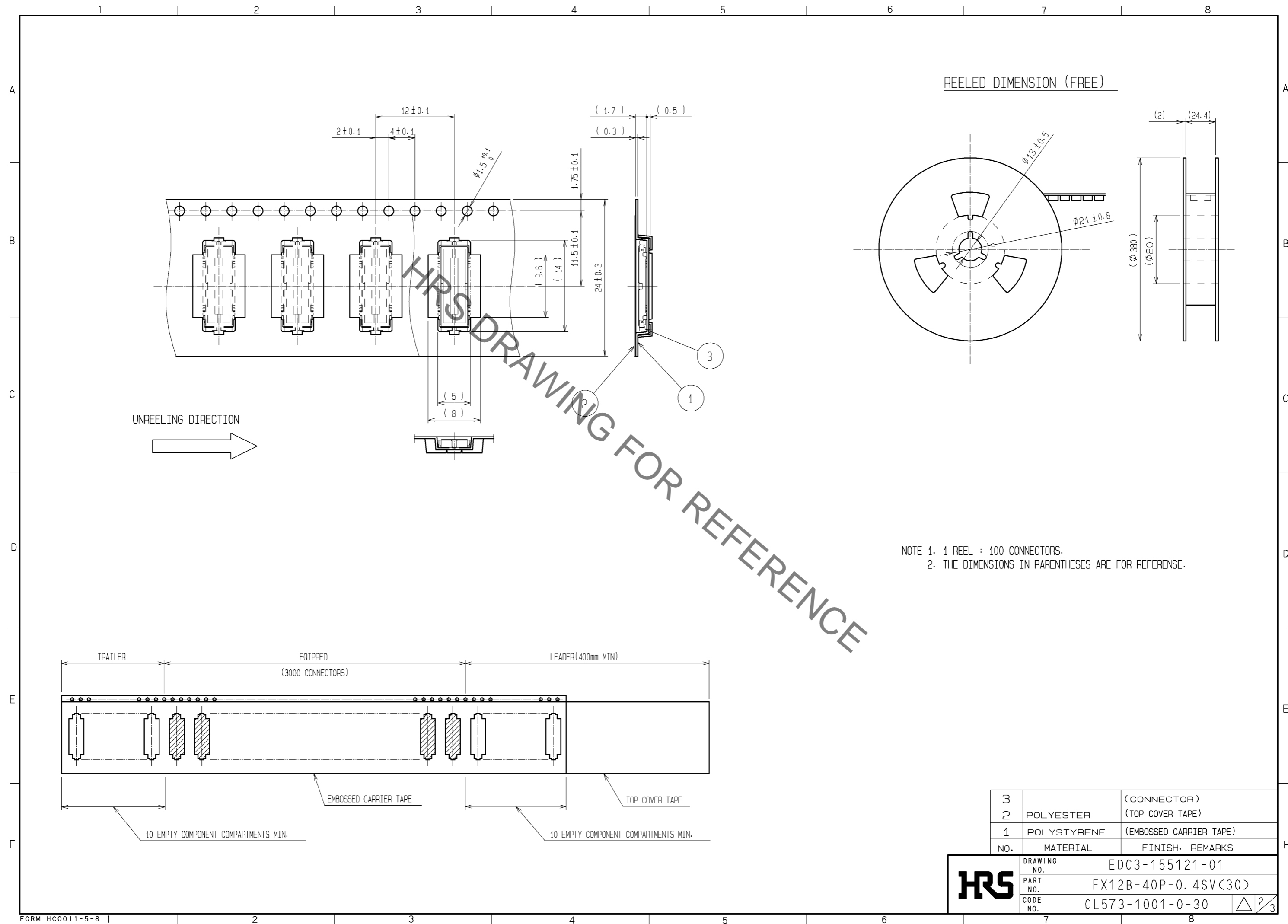


4	PHOSPHOR BRONZE	TIN-PLATING	2	PHOSPHOR BRONZE	CONTACT AREA:GOLD 0.1μm min.		
3	PHOSPHOR BRONZE	GOLD FLASH			LEAD AREA:GOLD FLASH		
1	POLYAMIDE	BLACK UL94V-0			UNDER PLATING:NICKEL 1μm min.		
NO.	MATERIAL	FINISH . REMARKS		NO.	MATERIAL	FINISH . REMARKS	

UNITS mm		SCALE 10 : 1		COUNT	DESCRIPTION OF REVISIONS	DESIGNED	CHECKED	DATE

HIROSE ELECTRIC CO., LTD.	APPROVED :HS. OKAWA	14. 04. 10	DRAWING NO.	EDC3-155121-01	
	CHECKED :HT. YAMAGUCHI	14. 04. 10	PART NO.	FX12B-40P-0. 4SV<30>	
	DESIGNED :TY. EDAGAWA	14. 04. 08	CODE NO.	CL573-1001-0-30	
	DRAWN :TY. EDAGAWA	14. 04. 08	1/3		



NOTES WHEN MATING FX12 SERIES CONNECTORS.

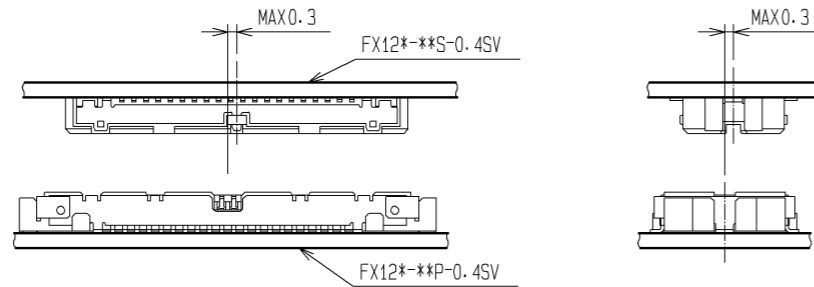


FIGURE-1

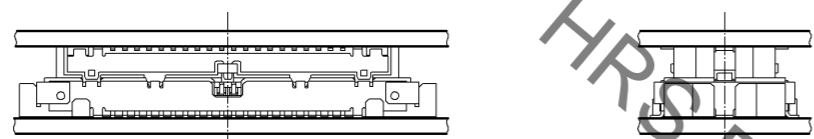


FIGURE-2

THE SELF ALIGNMENT RANGE OF THIS CONNECTOR IS 0.3 mm.
PLACE THE CONNECTORS AT THE INITIAL MATING POSITION WHERE ITS MISALIGNMENT IS WITHIN 0.3 mm.
THEN INSERT THE CONNECTOR ON THE CHAMFERED PARTS OF THE MATING-HALF'S OPENING. MAKE SURE TO
KEEP THE CONNECTORS PARALLEL TO EACH OTHER.
NOTE THAT ANGLED INSERTION OR THE PRESSURE APPLIED TO THE CONNECTORS BEFORE ALIGNMENT MAY
RESULT IN DAMAGE TO MOLDED HOUSING OR CONTACT DEFORMATION.

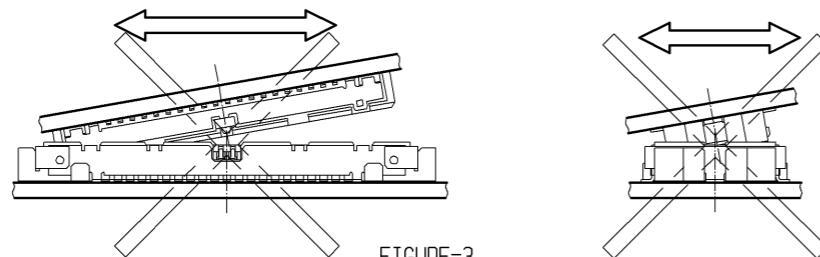


FIGURE-3

PRESS-DOWN EVENLY UNTIL SLIGHT RESISTANCE IS FELT.
OVERCOMING THIS SLIGHT RESISTANCE WILL COMPLETE THE MATING OF RECEPTACLE WITH HEADER.
A DEFINITE 'CLICK' SENSATION WILL CONFIRM THE FULLY MATED CONDITION.

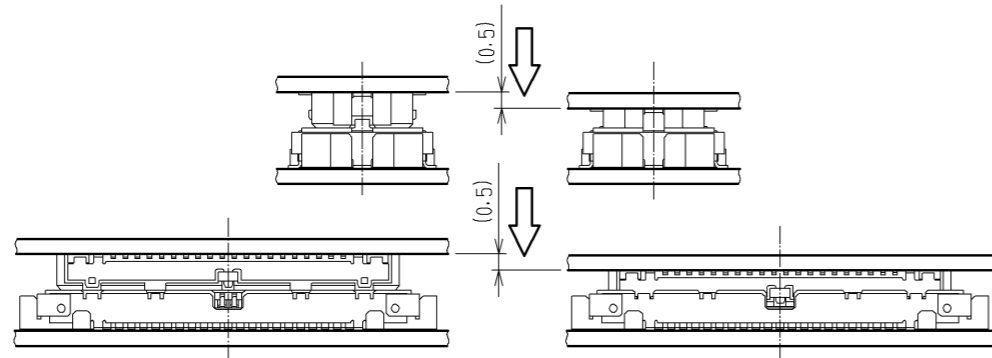


FIGURE-4

THE MATED CONDITIONS CAN BE RELEASED BY A DROP IMPACT OR THE APPLIED FORCE CAUSED BY FPC-HANDLING.
FIX THE CONNECTORS BY APPLYING PRESSURE IN THE MATING DIRECTION WITH THE DEVICE OR A BUFFER MATERIAL.

NOTES WHEN EXTRACTING

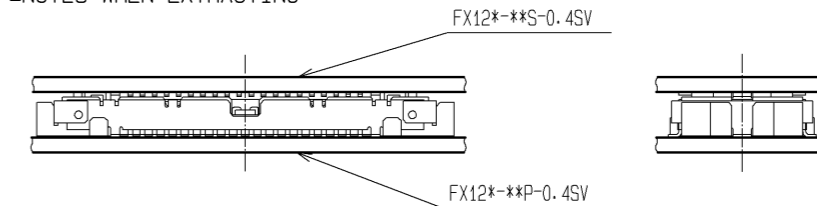


FIGURE-5

LEFT EVEN ONE SIDE, KEEPING BOTH BOARDS PARALLEL TO EACH OTHER.

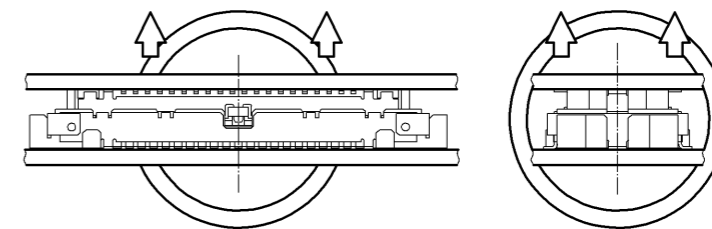


FIGURE-6

WHEN HANDLING CIRCUMSTANCES PREVENT THE CONNECTOR FROM BEING KEPT
LEVEL DURING UN-MATING, ONE END MAY BE LIFTED SEPARATE AS SHOWN ON FIGURE-7.
HOWEVER, TO UTILIZE THIS PROCEDURE THE CONNECTOR MUST BE MOUNTED ON
A SUFFICIENTLY RIGID CIRCUIT BOARD.
ANY DEFLECTION OF THE BOARD DURING THIS OPERATION MAY RESULT IN DAMAGE TO
THE CONNECTOR OR SOLDER JOINTS.
DO NOT ATTEMPT THE START OF THE UN-MATING OF THE CONNECTORS FROM ONE SIDE(FIGURE-8)

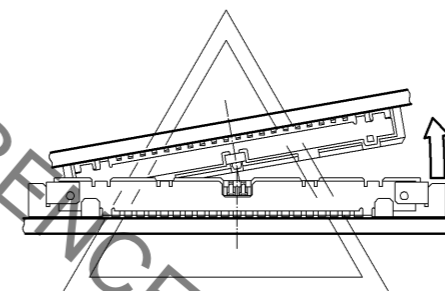


FIGURE-7

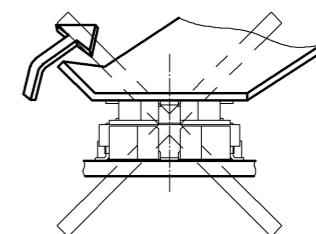


FIGURE-8

WHEN REMOVAL IS FROM THE WIDTH ORIENTATION AS ILLUSTRATED IN THE DIAGRAM TO THE LEFT,
DAMAGE COULD BE CAUSED TO THE CONNECTOR. DO NOT PERFORM REMOVAL FROM
THE WIDTH ORIENTATION.

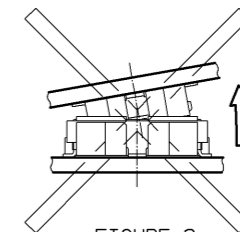


FIGURE-9

HRS

DRAWING NO.	EDC3-155121-01
PART NO.	FX12B-40P-0.4SV(30)
CODE NO.	CL573-1001-0-30

3/3

Mouser Electronics

Authorized Distributor

Click to View Pricing, Inventory, Delivery & Lifecycle Information:

[Hirose Electric:](#)

[FX12B-40P-0.4SV\(30\)](#)