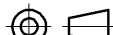


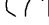
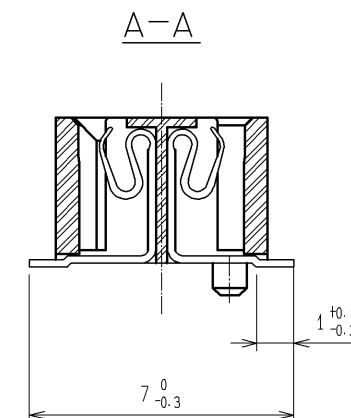
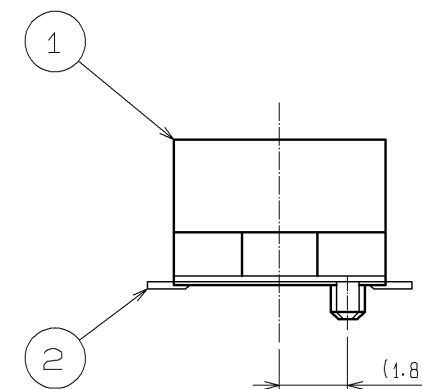
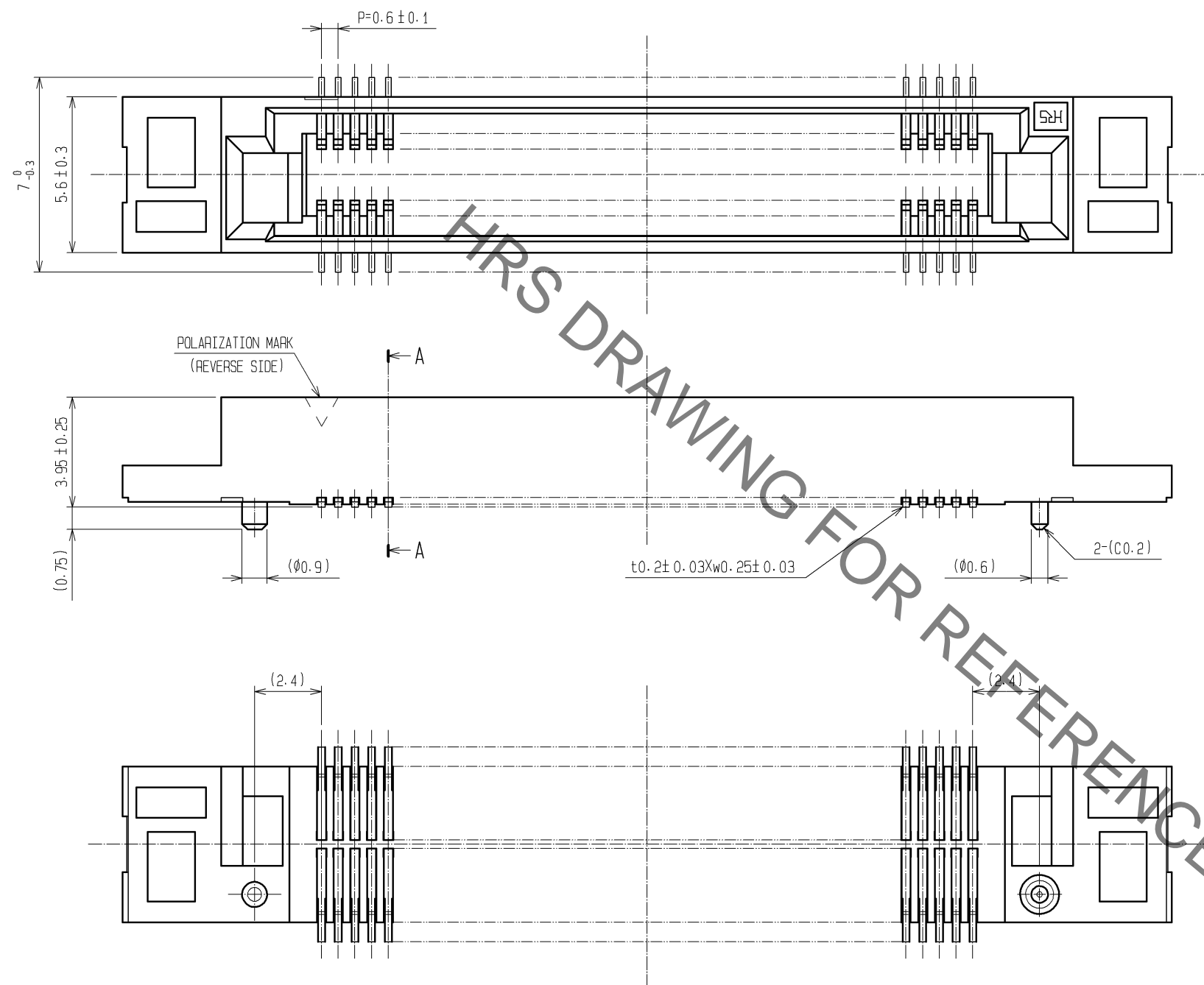


- NOTES 1 LEAD CO-PLANARITY SHALL BE 0.1mm MAX.
2 AFTER MOUNTING BOARD. REF. NO.3 SHALL BE REMOVED.
3 FOR MODIFICATION, ETC., PREVENTIVE HOLE FOR SINK
MARK MAY BE ADDED DEPENDS ON CIRCUMSTANCES.
4 THE DIMENSIONS IN PARENTHESES ARE FOR REFERENCE.

1, 3	PPS	LIGHT BROWN (UL94V-0)	2	PHOSPHOR BRONZE	CONTACT AREA:GOLD 0.1μm min				
					LEAD AREA:GOLD 0.03μm min.				
					UNDER PLATING:NICKEL 1.5μm min				
NO.	MATERIAL	FINISH , REMARKS		NO.	MATERIAL	FINISH , REMARKS			
UNITS mm		SCALE 2 : 1		COUNT	DESCRIPTION OF REVISIONS		DESIGNED	CHECKED	DATE
 HIROSE ELECTRIC CO., LTD.	APPROVED : HS. OKAWA		10. 05. 11		DRAWING NO. EDC3-150962-25				
	CHECKED : HT. YAMAGUCHI		10. 05. 11		PART NO. FX8C-80/80S11-SVJ(71)				
	DESIGNED : SY. KAMIGA		10. 05. 11		CODE NO. CL578-0903-2-71				
	DRAWN : HK. SUNADORI		10. 05. 11		 1/2				

Jun.1.2019 Copyright 2019 HIROSE ELECTRIC CO., LTD. All Rights Reserved.
In case of consideration for using Automotive equipment / device which demand high reliability, kindly contact our sales window correspondents.

DETAIL AFTER REMOVING JOINT(5:1)



NOTE THE DIMENSIONS IN PARENTHESES ARE FOR REFERENCE.

HRS	DRAWING NO.	EDC3-150962-25
	PART NO.	FX8C-80/80S11-SVJ(71)
	CODE NO.	CL578-0903-2-71

△ 2/2

Mouser Electronics

Authorized Distributor

Click to View Pricing, Inventory, Delivery & Lifecycle Information:

[Hirose Electric:](#)

[FX8C-80/80S11-SVJ\(71\)](#)