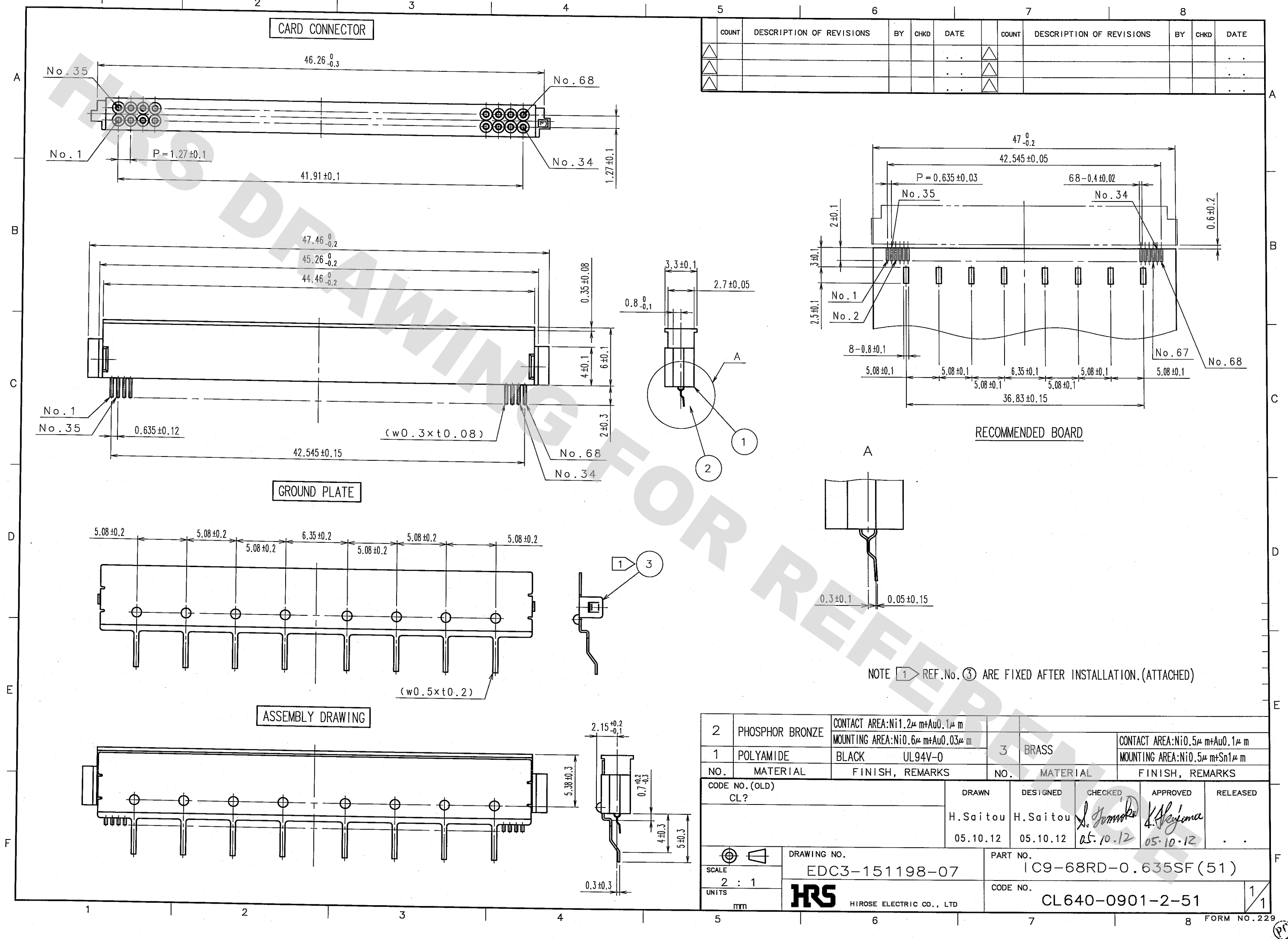


DRAWING FOR REFERENCE: This is subject to change without notice
08/11/2012

TO



COUNT	DESCRIPTION OF REVISIONS	BY	CHKD	DATE	COUNT	DESCRIPTION OF REVISIONS	BY	CHKD	DATE
△				..	△				..
△				..	△				..
△				..	△				..

NOTE ① REF.No. ③ ARE FIXED AFTER INSTALLATION.(ATTACHED)

2	PHOSPHOR BRONZE	CONTACT AREA: Ni1.2μm+Au0.1μm MOUNTING AREA: Ni0.6μm+Au0.03μm	3	BRASS	CONTACT AREA: Ni0.5μm+Au0.1μm MOUNTING AREA: Ni0.5μm+Sn1μm
1	POLYAMIDE	BLACK UL94V-0			
NO.	MATERIAL	FINISH, REMARKS	NO.	MATERIAL	FINISH, REMARKS
CODE NO. (OLD) CL?		DRAWN H.Saitou 05.10.12	DESIGNED H.Saitou 05.10.12		CHECKED S. Tomooka 05.10.12
		APPROVED K. Hayama 05.10.12		RELEASED ..	
DRAWING NO. EDC3-151198-07		PART NO. IC9-68RD-0.635SF(51)		CODE NO. CL640-0901-2-51	
SCALE 2 : 1		HRS HIROSE ELECTRIC CO., LTD		1/1	
UNITS mm					

Mouser Electronics

Authorized Distributor

Click to View Pricing, Inventory, Delivery & Lifecycle Information:

[Hirose Electric:](#)

[IC9-68RD-0.635SF\(51\)](#)