

DRAWING FOR REFERENCE: This is subject to change without notice
08/11/2012

TO
PCK

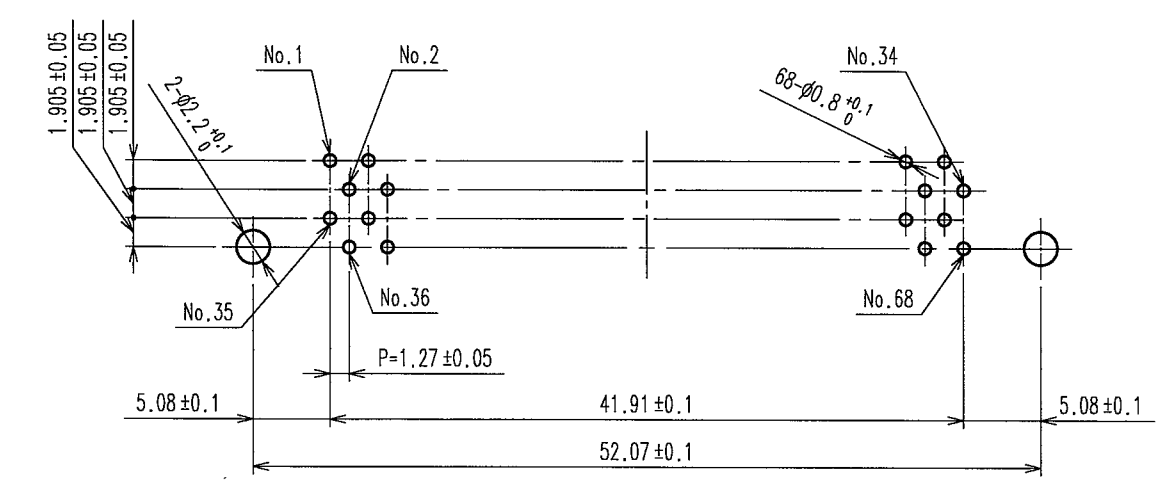
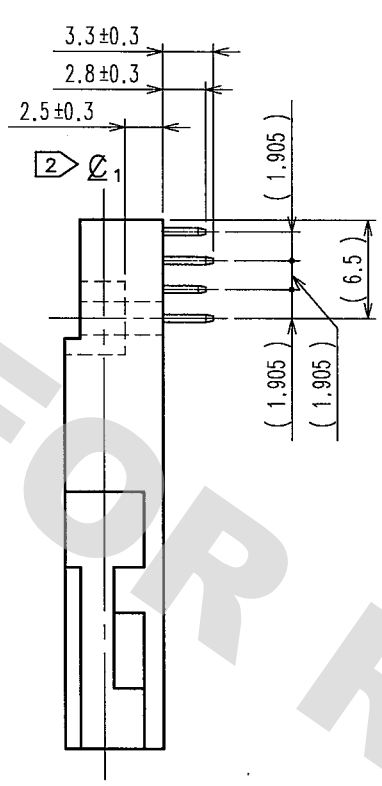
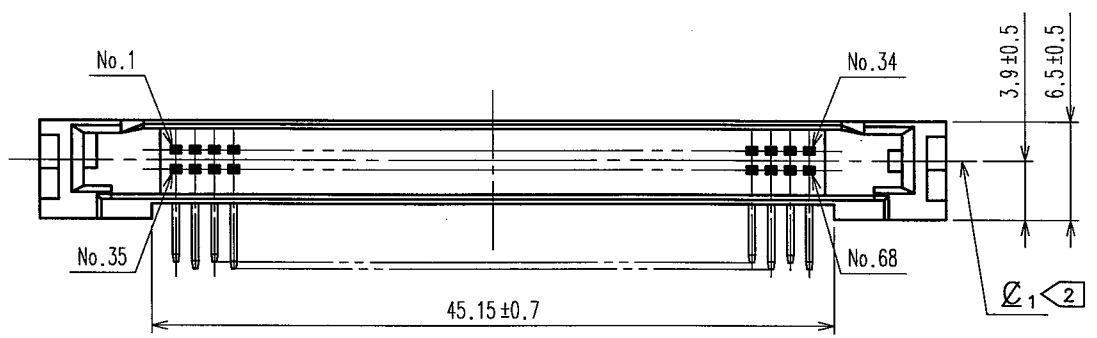
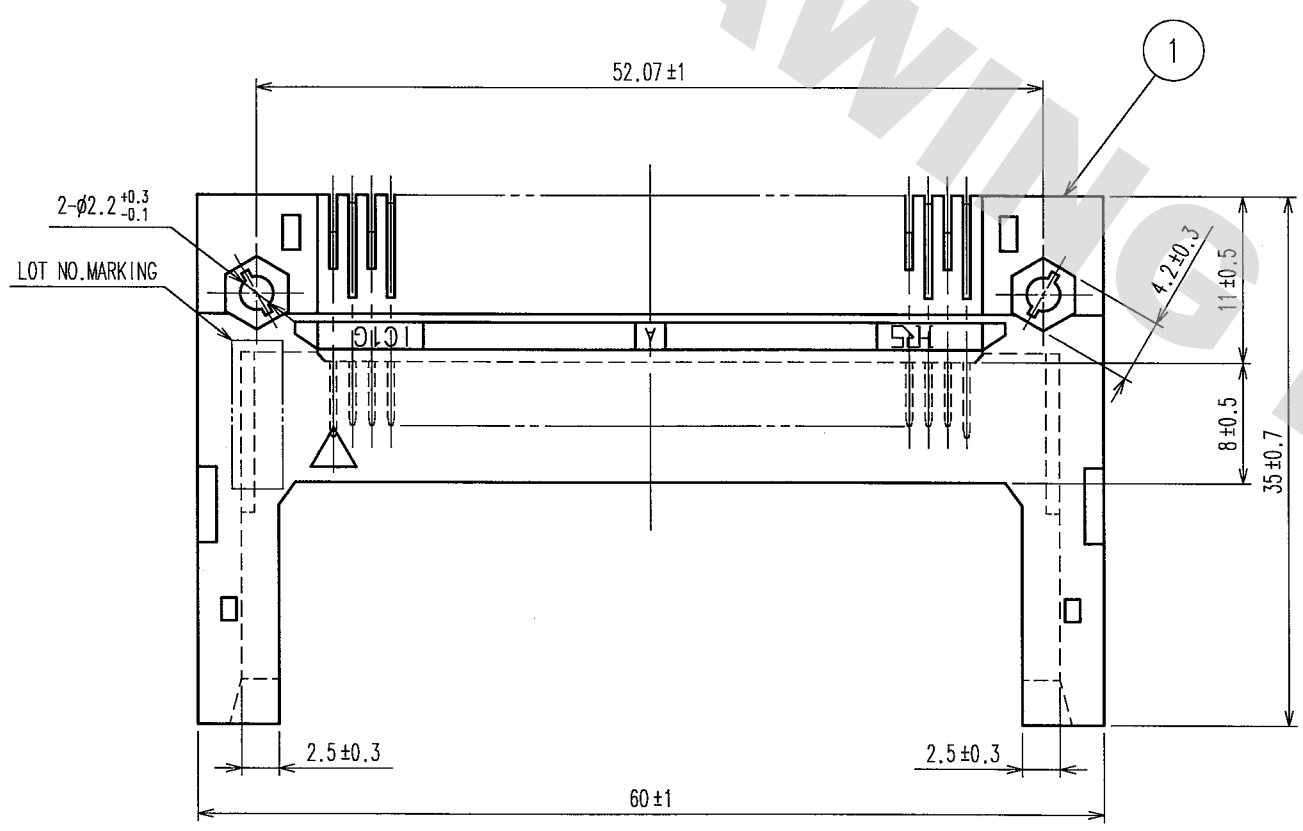
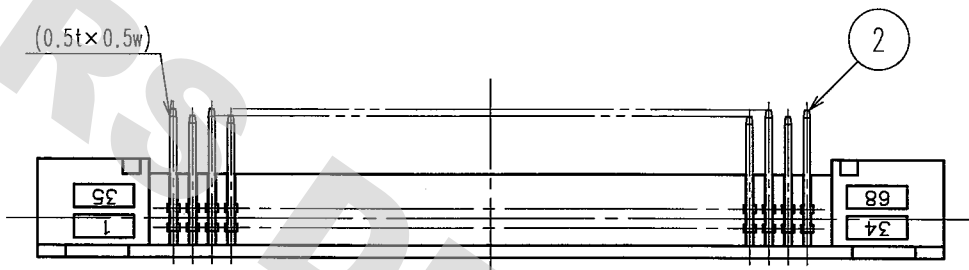
A
B
C
D
E
F

1 2 3 4

1 2 3 4

5 6 7 8

COUNT	DESCRIPTION OF REVISIONS	BY	CHKD	DATE	COUNT	DESCRIPTION OF REVISIONS	BY	CHKD	DATE
△				..	△				..
△				..	△				..
△				..	△				..



↑
THE SIDE OF CARD INSERTION
RECOMMENDED PCB HOLE (BACK BOARD) LAYOUT
(MOUNTING SIDE)

NOTE 1 PC CARD INTERFACE DIMENSION CORRESPONDS TO PC Card Standard.
② φ1 INDICATES THE ENGAGEMENT CENTER LINE.

2	BRASS	CONTACT AREA: Ni2.5μm+Au0.2μm
1	PBT	MOUNTING AREA: Ni2.5μm+Sn2μm
NO.	MATERIAL	BLACK UL94-V-0
FINISH, REMARKS		

CODE NO. (OLD) CL	DRAWN H.Saitou 05.08.23	DESIGNED H.Saitou 05.08.23	CHECKED J. Torioka 05.08.25	APPROVED K. Shyama 05.08.25	RELEASED ..
DRAWING NO. EDC3-084239-01		PART NO. IC1G-68PD-1.27DS(72)			
SCALE 2 : 1		CODE NO. CL640-0031-2-72		1/1	
UNITS mm		HIROSE ELECTRIC CO., LTD			

Mouser Electronics

Authorized Distributor

Click to View Pricing, Inventory, Delivery & Lifecycle Information:

[Hirose Electric:](#)

[IC1G-68PD-1.27DS\(72\)](#)