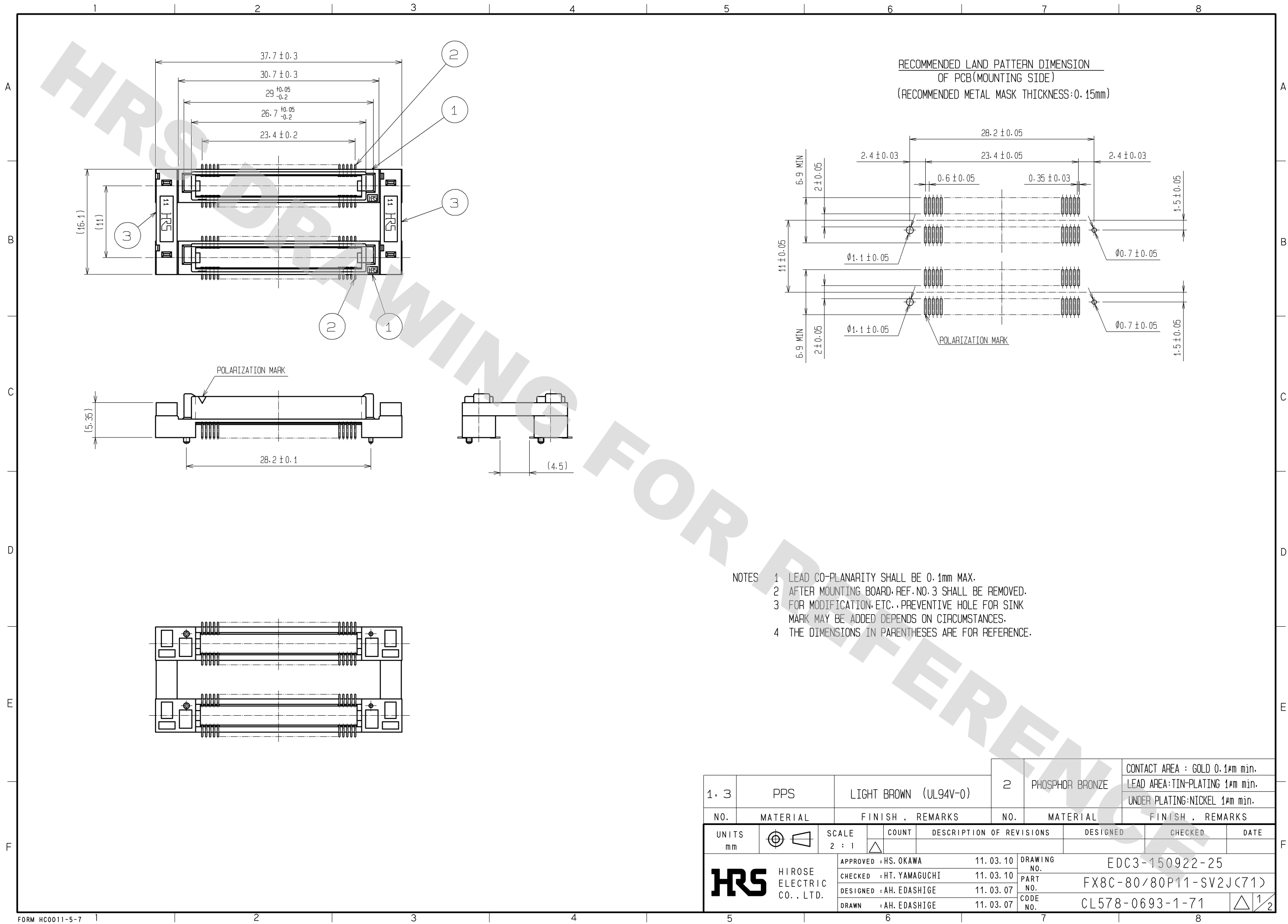
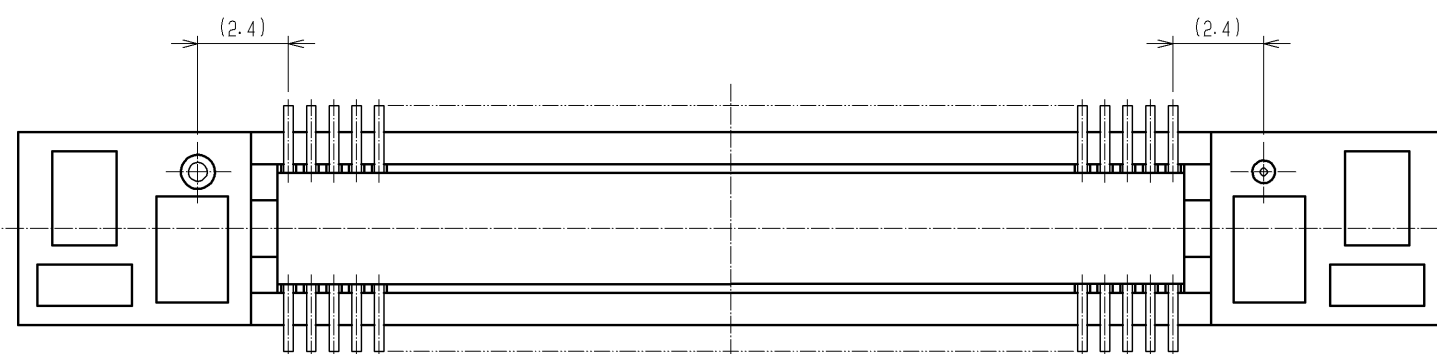
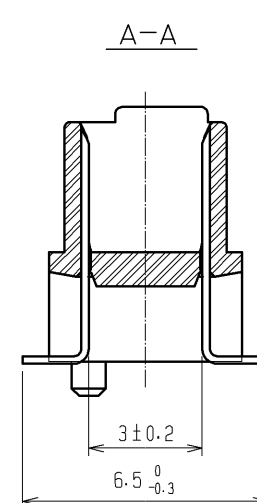
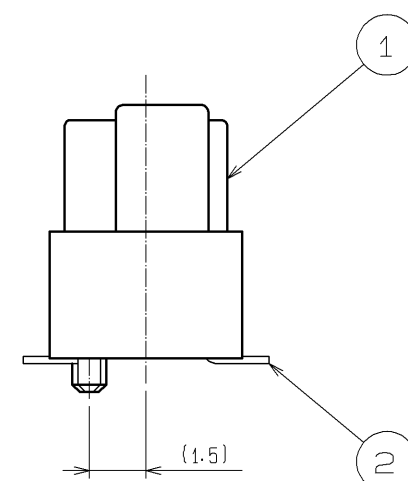
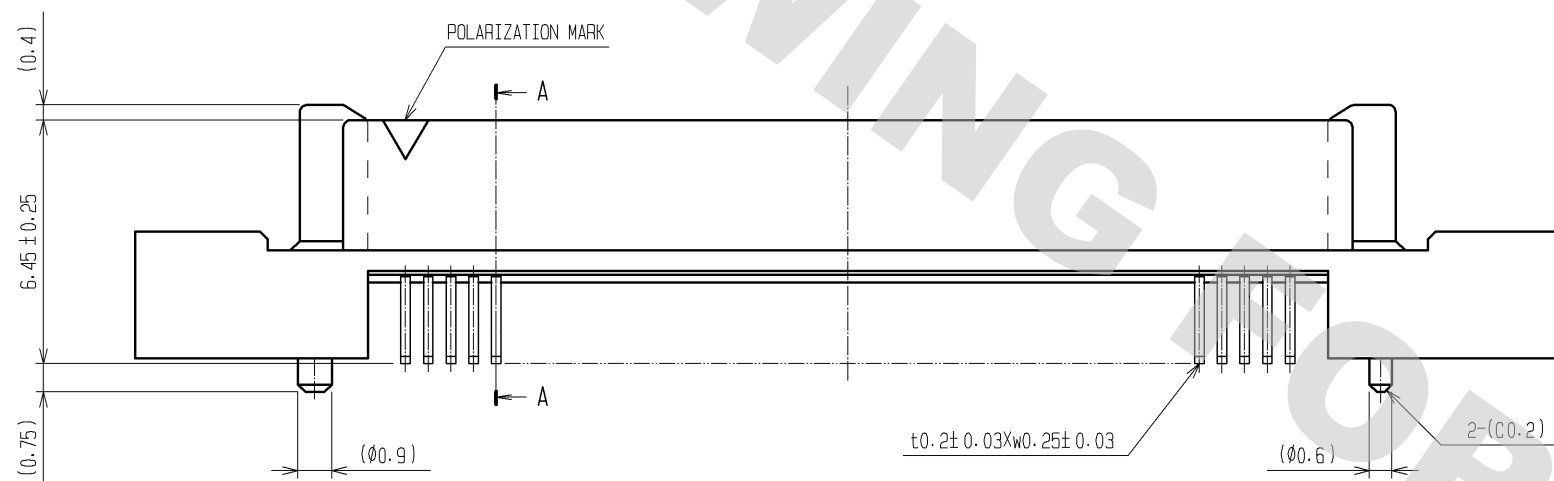
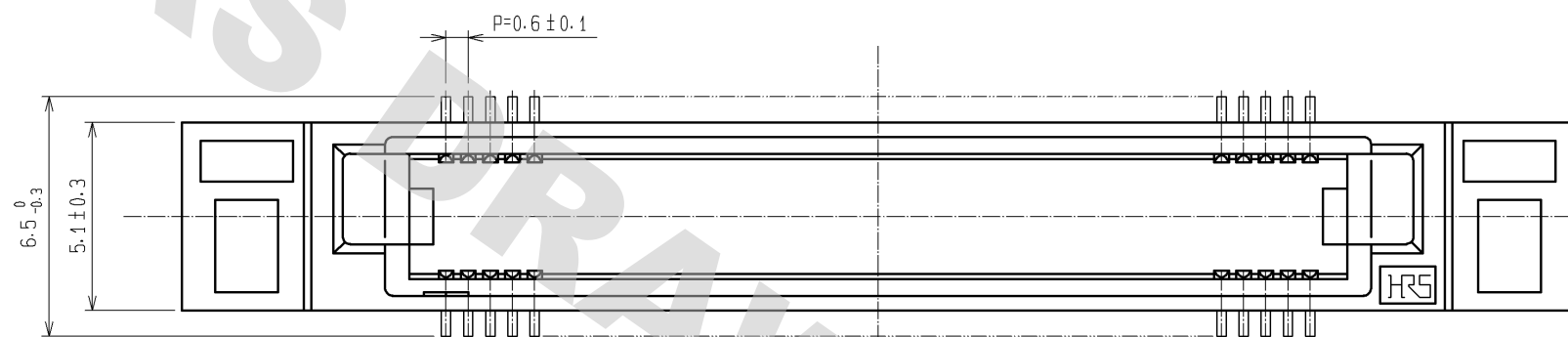


DRAWING FOR REFERENCE: This is subject to change without notice
08/11/2012



1. 3	PPS	LIGHT BROWN (UL94V-0)	2	PHOSPHOR BRONZE	CONTACT AREA : GOLD 0.1μm min. LEAD AREA: TIN-PLATING 1μm min. UNDER PLATING: NICKEL 1μm min.
NO.	MATERIAL	FINISH . REMARKS	NO.	MATERIAL	FINISH . REMARKS
UNITS mm		SCALE 2 : 1	COUNT 	DESCRIPTION OF REVISIONS	DESIGNED CHECKED DATE
		APPROVED : HS. OKAWA	11. 03. 10	DRAWING NO.	EDC3-150922-25
		CHECKED : HT. YAMAGUCHI	11. 03. 10	PART NO.	FX8C-80/80P11-SV2J(71)
		DESIGNED : AH. EDASHIGE	11. 03. 07	CODE NO.	CL578-0693-1-71
		DRAWN : AH. EDASHIGE	11. 03. 07		

DETAIL AFTER REMOVING JOINT



NOTES THE DIMENSIONS IN PARENTHESES ARE FOR REFERENCE.

HRS

DRAWING NO.	EDC3-150922-25
PART NO.	FX8C-80/80P11-SV2J(71)
CODE NO.	CL578-0693-1-71

2/2

Mouser Electronics

Authorized Distributor

Click to View Pricing, Inventory, Delivery & Lifecycle Information:

[Hirose Electric:](#)

[FX8C-80/80P11-SV2J\(71\)](#)