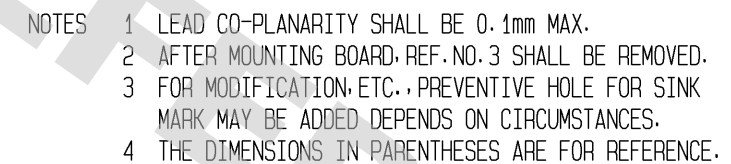
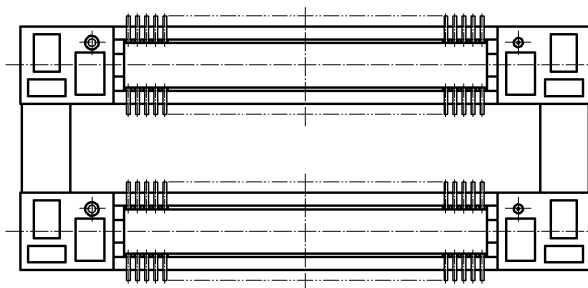




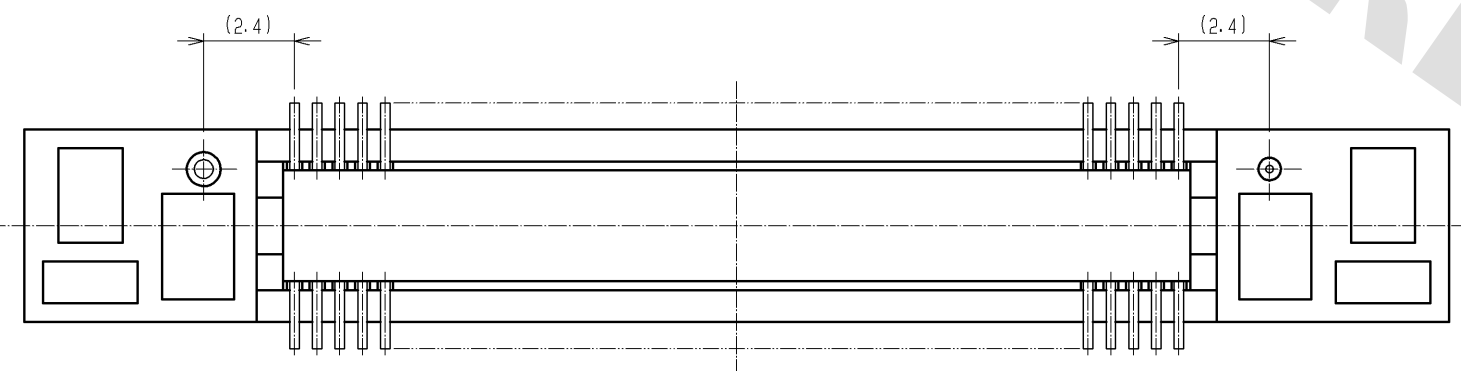
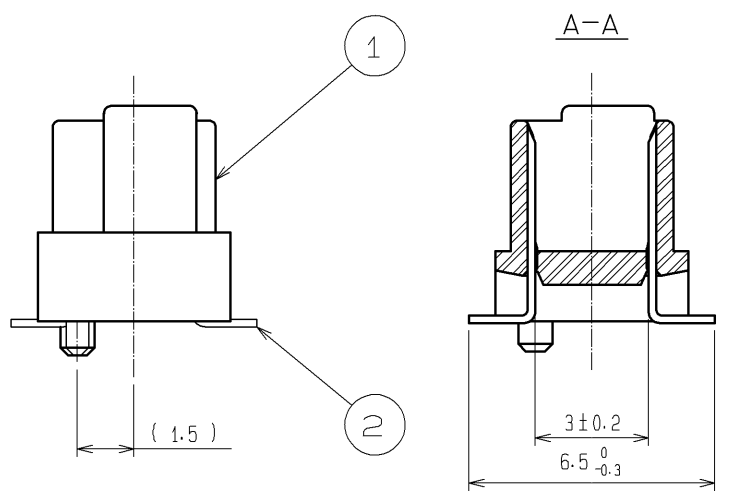
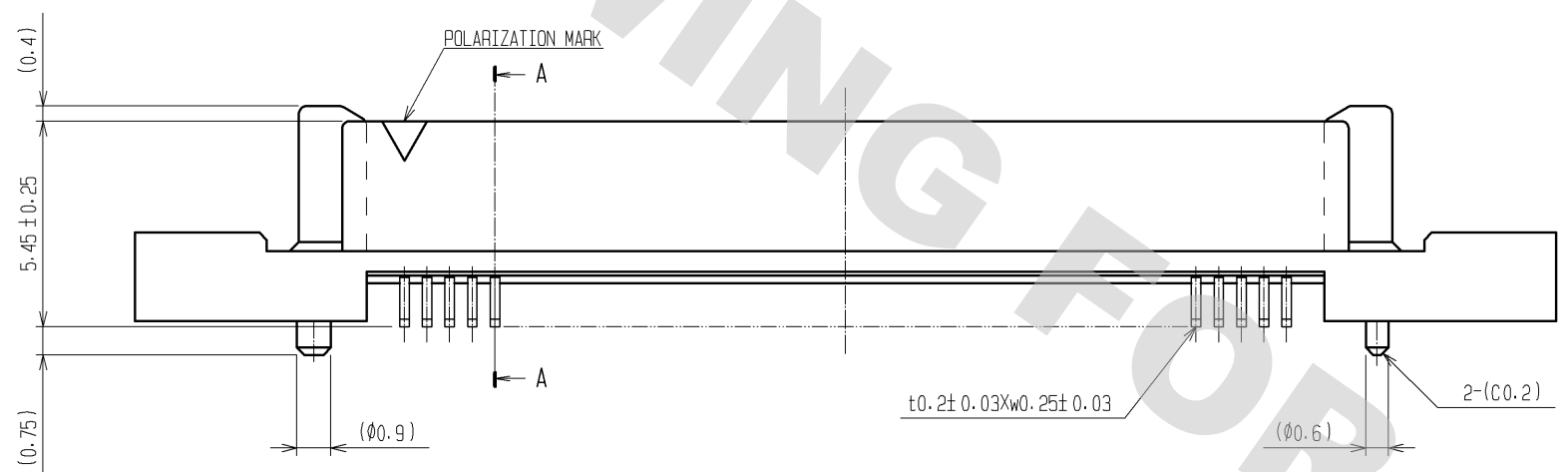
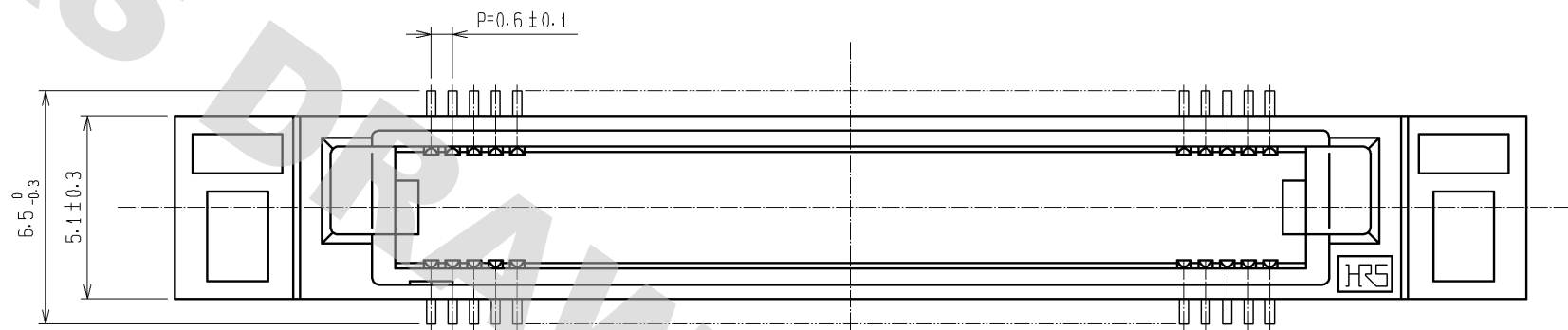
DRAWING F
08/11/2012



1. 3	PPS	LIGHT BROWN (UL94V-0)		2	PHOSPHOR BRONZE	CONTACT AREA : GOLD 0.1μm min.	
						LEAD AREA:TIN-PLATING 1μm min.	
						UNDER PLATING:NICKEL 1μm min.	
NO.	MATERIAL	FINISH . REMARKS			NO.	MATERIAL	FINISH . REMARKS
UNITS mm		SCALE 2 : 1		COUNT	DESCRIPTION OF REVISIONS		DESIGNED
							CHECKED
							DATE
 HIROSE ELECTRIC CO., LTD.		APPROVED : HS. OKAWA	11. 03. 10	DRAWING NO. EDC3-150912-25			
		CHECKED : HT. YAMAGUCHI	11. 03. 10	PART NO. FX8C-80/80P11-SV1J(71)			
		DESIGNED : AH. EDASHIGE	11. 03. 04	CODE NO. CL578-0673-4-71			
		DRAWN : AH. EDASHIGE	11. 03. 04	 1/2			

DRAWING FOR REFERENCE: This is subject to change without notice
08/11/2012

DETAIL AFTER REMOVING JOINT



NOTES THE DIMENSIONS IN PARENTHESES ARE FOR REFERENCE.

HRS	DRAWING NO.	EDC3-150912-25	
	PART NO.	FX8C-80/80P11-SV1J(71)	
	CODE NO.	CL578-0673-4-71	\triangle 2/2

Mouser Electronics

Authorized Distributor

Click to View Pricing, Inventory, Delivery & Lifecycle Information:

[Hirose Electric:](#)

[FX8C-80/80P11-SV1J\(71\)](#)