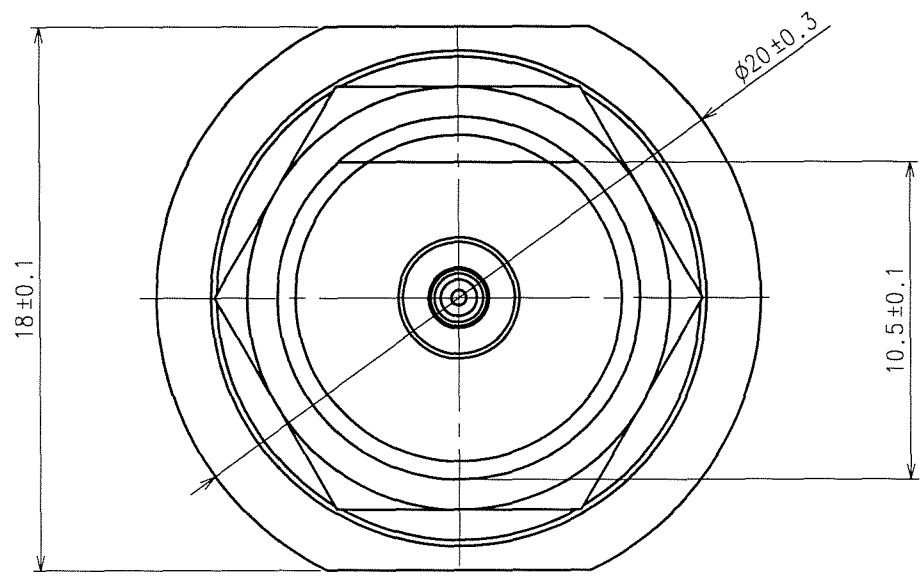
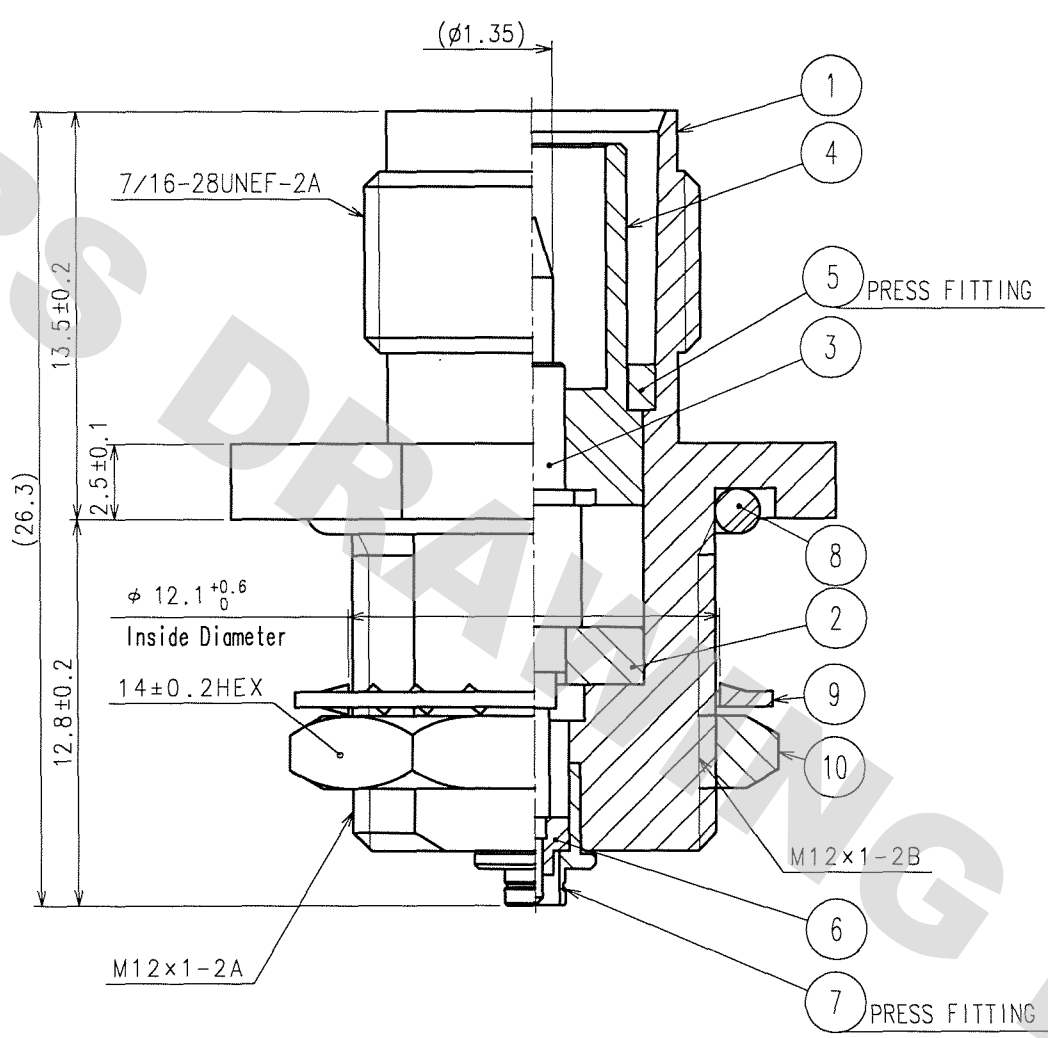


DRAWING FOR REFERENCE: This is subject to change without notice  
08/11/2012

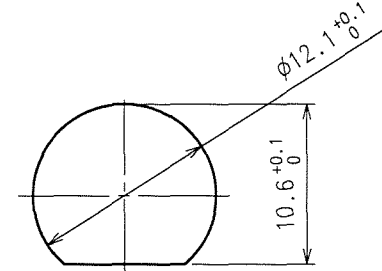
TO
RF

A  
B  
C  
D  
E  
F



COUNT	DESCRIPTION OF REVISIONS	BY	CHKD	DATE	COUNT	DESCRIPTION OF REVISIONS	BY	CHKD	DATE

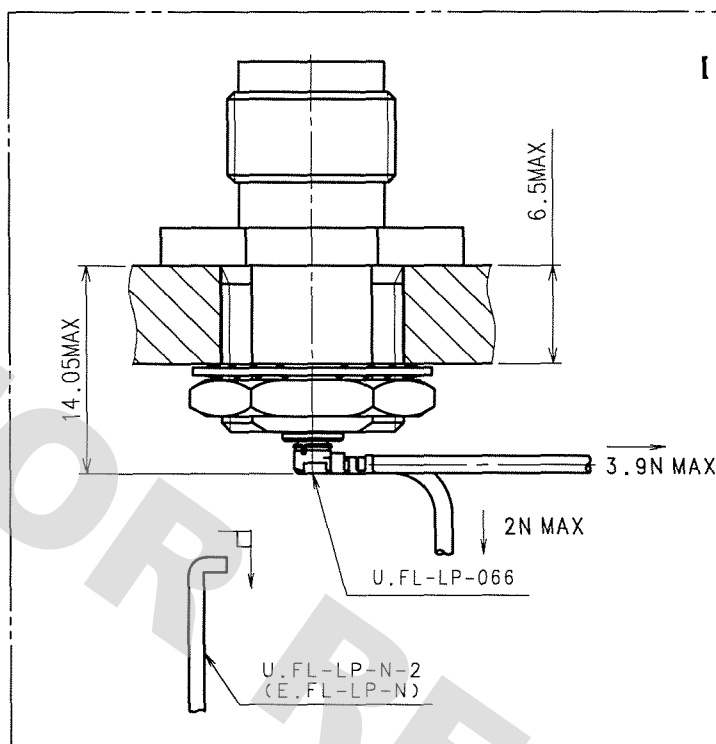
PANEL CUTOUT (2:1)



PANEL THICKNESS  
1.0~6.5

RECOMMENDED TIGHTENING TORQUE  
OF REF.No ⑩ 【3N·m】

【PRECAUTIONS FOR HANDLING (2:1)】



- ◆Connector insertion and extraction  
a.Connector shall be extracted vertically by specialised extraction JIG.  
Part No.:U.FL-LP-N-2(CL Code:CL331-0494-5)  
E.FL-LP-N (CL Code:CL331-0441-9)  
Never hold the cable when extracting the cable because it damages the connector.
- b.Insert the connector as perpendicularly to the mating surface as possible by aligning the mating axes of both connectors. Do not excessively slant the connectors when inserting.
- ◆Allowable loads on the cable after the connectors are mated.  
The figures below show the maximum allowable loads on the cable. Do not apply loads exceeding these values to the cable.

5	BRASS	NICKEL PLATING:2μm MIN	10	BRASS	NICKEL PLATING:2μm MIN
4	PTFE		9	STEEL	NICKEL PLATING:2μm MIN
3	PHOSPHOR BRONZE	NICKEL UNDER PLATING:2μm MIN GOLD PLATING:0.3μm MIN	8	SILICONE RUBBER	
2	PTFE		7	BRASS	NICKEL PLATING:2μm MIN
1	BRASS	NICKEL PLATING:2μm MIN	6	PTFE	
NO.	MATERIAL	FINISH, REMARKS	NO.	MATERIAL	FINISH, REMARKS

CODE NO. (OLD) CL311-0399-0-00		DRAWN n. Ninomija 05.09.03	DESIGNED n. Ninomija 05.09.03	CHECKED K. Shimizu 05.09.05	APPROVED J. Mitani 05.09.05	RELEASED 
RoHS COMPLIANT						
DRAWING NO. EDC3-306018-40		PART NO. TNC(R)J-U.FLJ-WBPA(40)				
SCALE 4: 1		CODE NO. CL311-0399-0-40				1/1
UNITS mm		HRS HIROSE ELECTRIC CO., LTD				

# Mouser Electronics

Authorized Distributor

Click to View Pricing, Inventory, Delivery & Lifecycle Information:

[Hirose Electric:](#)

[TNC\(R\)J-U.FLJ-WBPA\(40\)](#)