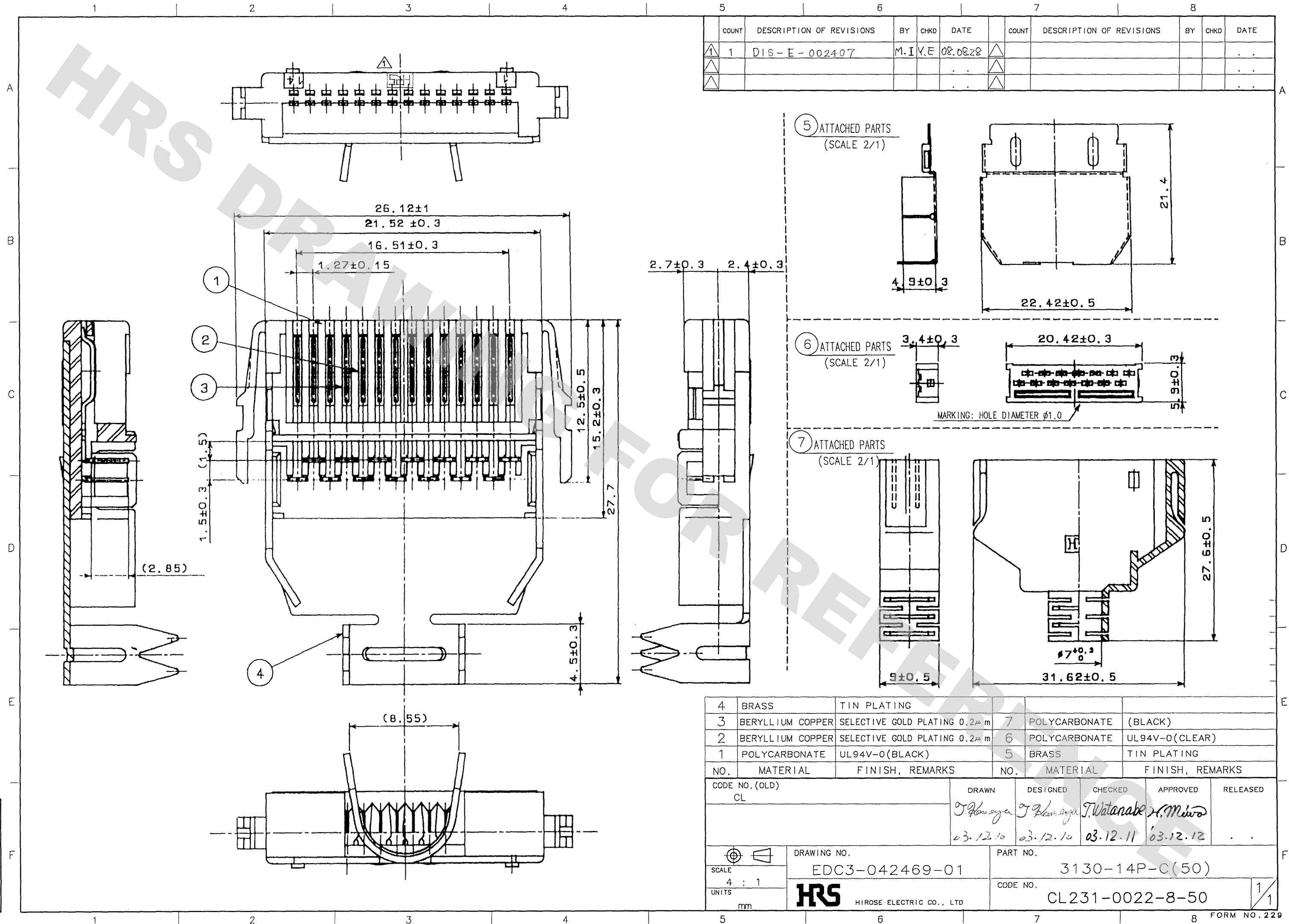


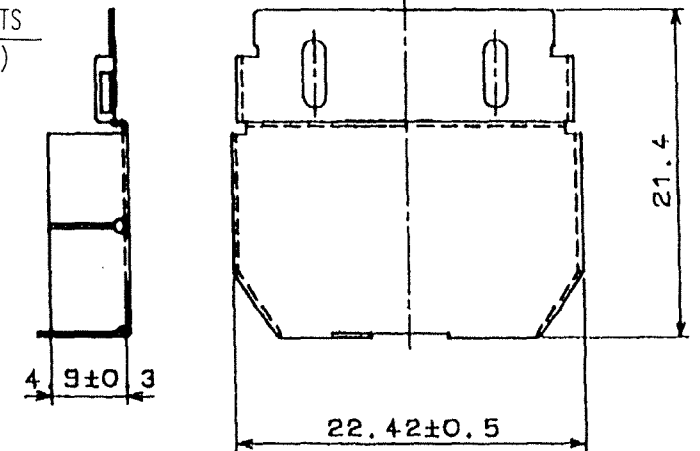
DRAWING FOR REFERENCE: This is subject to change without notice
08/11/2012

TO
Q

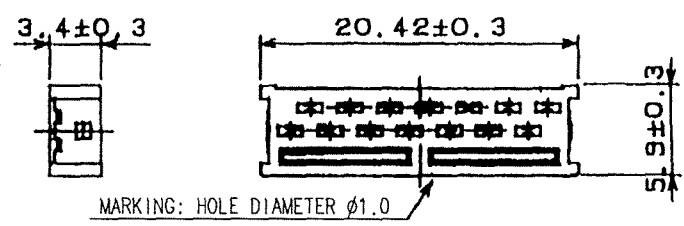


COUNT	DESCRIPTION OF REVISIONS	BY	CHKD	DATE	COUNT	DESCRIPTION OF REVISIONS	BY	CHKD	DATE
1	DIS-E-002407	M.I.Y.E		08.08.28					

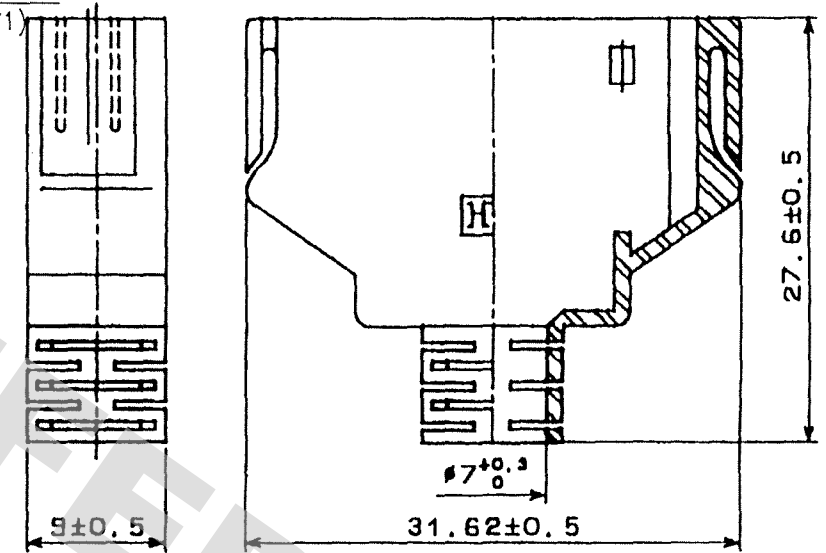
5 ATTACHED PARTS
(SCALE 2/1)

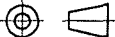


6 ATTACHED PARTS
(SCALE 2/1)



7 ATTACHED PARTS
(SCALE 2/1)



4	BRASS	TIN PLATING				
3	BERYLLIUM COPPER	SELECTIVE GOLD PLATING 0.2μm	7	POLYCARBONATE	(BLACK)	
2	BERYLLIUM COPPER	SELECTIVE GOLD PLATING 0.2μm	6	POLYCARBONATE	UL94V-0(CLEAR)	
1	POLYCARBONATE	UL94V-0(BLACK)		5	BRASS	TIN PLATING
NO.		MATERIAL		FINISH, REMARKS		
CODE NO. (OLD)		DRAWN		DESIGNED	CHECKED	APPROVED
CL		T. Watanabe 03.12.10		T. Watanabe 03.12.10	T. Watanabe 03.12.11	H. Miwa 03.12.12
		DRAWING NO.		PART NO.		
SCALE 4 : 1		EDC3-042469-01		3130-14P-C(50)		
UNITS mm		HRS HIROSE ELECTRIC CO., LTD		CODE NO. CL231-0022-8-50		
				1/1		

Mouser Electronics

Authorized Distributor

Click to View Pricing, Inventory, Delivery & Lifecycle Information:

[Hirose Electric:](#)

[3130-14P-C\(50\)](#)