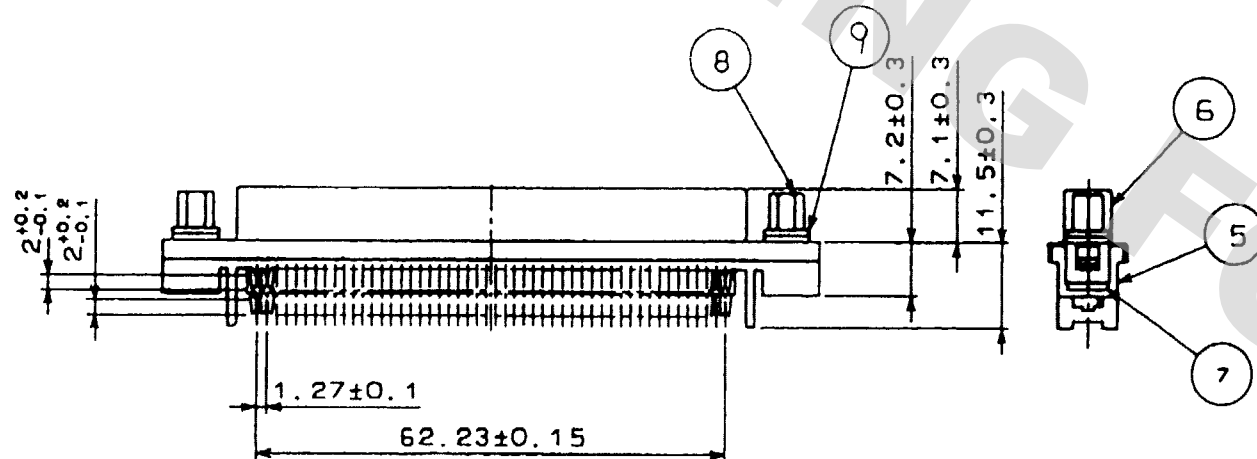
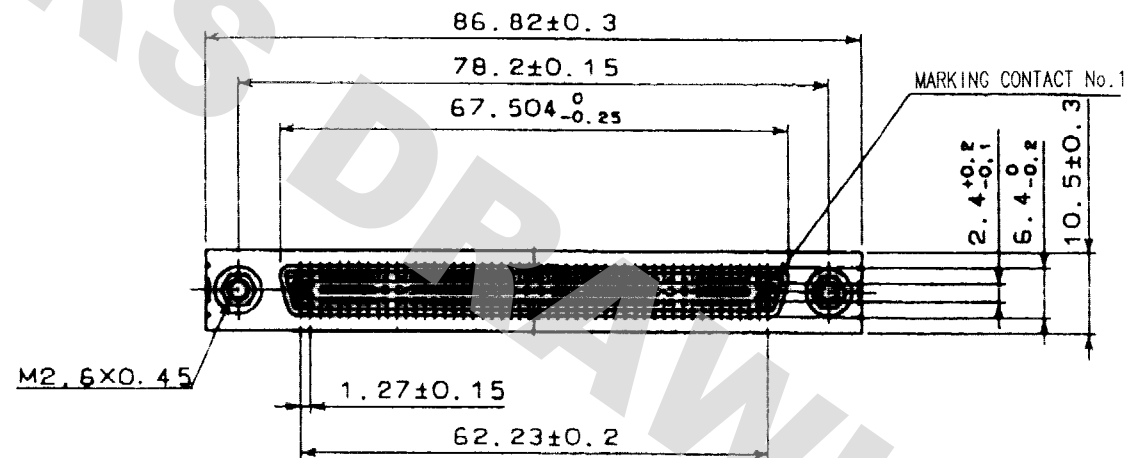


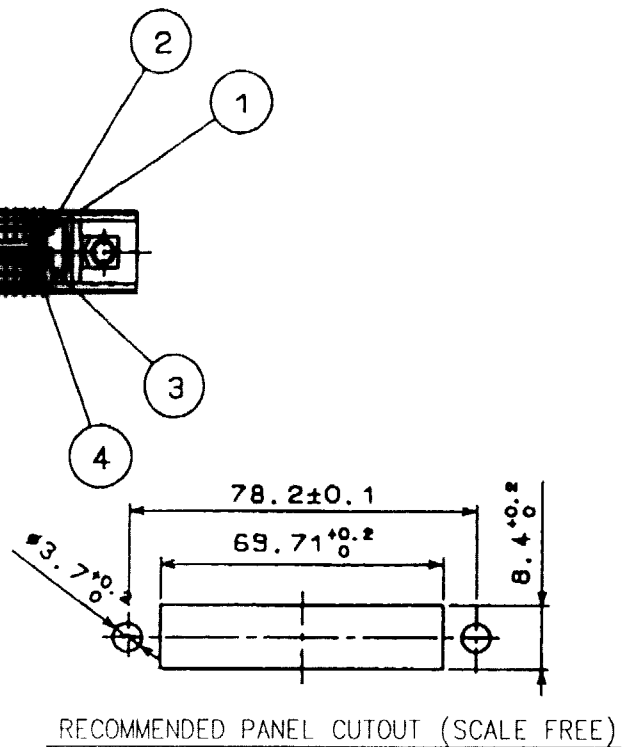
DRAWING FOR REFERENCE: This is subject to change without notice
08/11/2012

TO
Q

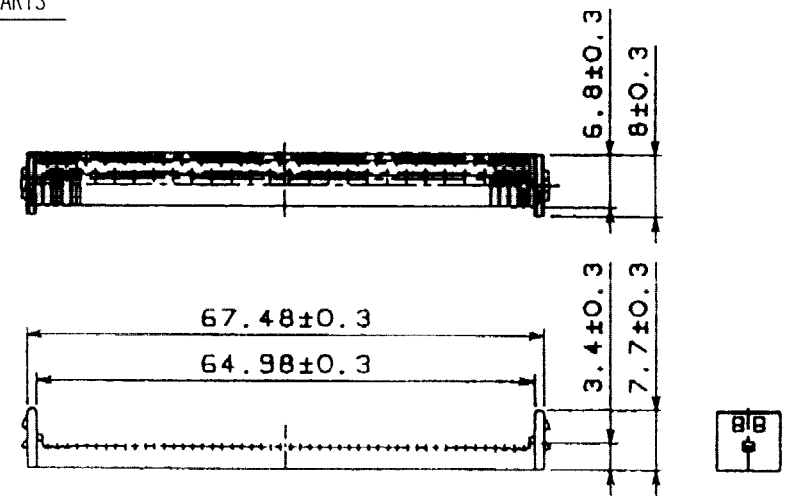


NOTE ① PART No. ⑨ SHALL BE FINISHED AS TABLE SHOWN BELOW ACCORDING TO PANEL THICKNESS.
(WASHER THICKNESS : 0.8)

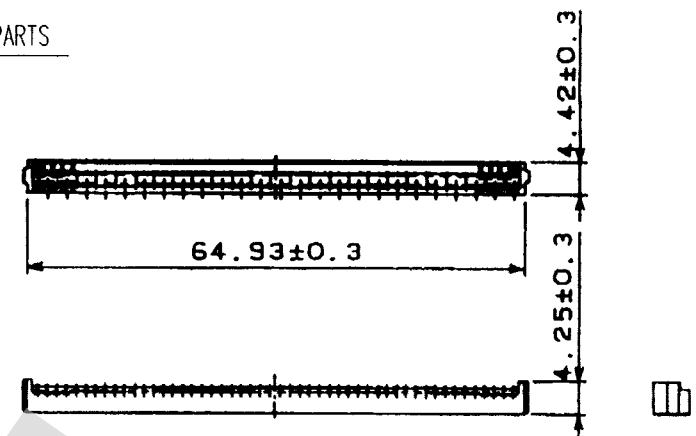
PANEL THICKNESS	No. OF WASHER
t=0.7~1.0	2 EACH
t=1.5~1.8	1 EACH



⑩ ATTACHED PARTS



⑪ ATTACHED PARTS



6	STEEL	NICKEL PLATING			
5	PBT	UL94V-0(MILKY-WHITE)	11	PBT	UL94V-0(BLACK)
4	PHOSPHOR BRONZE	SELECTIVE GOLD PLATING 0.2μm	10	PBT	UL94V-0(BLACK)
3	PHOSPHOR BRONZE	SELECTIVE GOLD PLATING 0.2μm	9	STEEL	NICKEL PLATING
2	PHOSPHOR BRONZE	SELECTIVE GOLD PLATING 0.2μm	8	STEEL	NICKEL PLATING
1	PHOSPHOR BRONZE	SELECTIVE GOLD PLATING 0.2μm	7	STEEL	NICKEL PLATING
NO.	MATERIAL	FINISH, REMARKS	NO.	MATERIAL	FINISH, REMARKS
CODE NO.(OLD) CL			DRAWN	DESIGNED	CHECKED
			Y. Hanazawa	Y. Hanazawa	Y. Enami
			03.10.08	03.10.08	03.10.09
DRAWING NO. EDC3-042653-01			PART NO. DX33A-100S-LNA(50)		
SCALE 1 : 1			CODE NO. CL230-0171-1-50		
UNITS mm			HRS HIROSE ELECTRIC CO., LTD		
			1/1		

Mouser Electronics

Authorized Distributor

Click to View Pricing, Inventory, Delivery & Lifecycle Information:

[Hirose Electric:](#)

[DX33A-100S-LNA\(50\)](#)