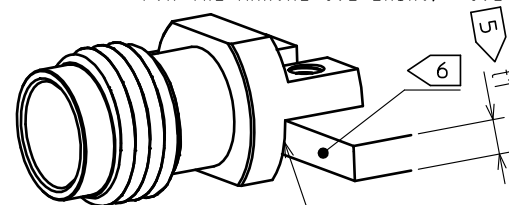


( 1 ) WHEN THE CONNECTOR IS MOUNTED ON PCB. PLEASE DO NOT ALLOW A GAP BETWEEN THE EDGE OF PCB AND CONNECTOR.

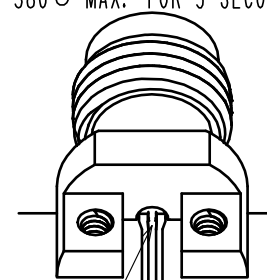
( 2 ) PLEASE MOUNT THE CONNECTOR AS LOCATED IN THE MIDDLE OF THE SIGNAL PAD OF PCB.

( 3 ) SOLDERING CONDITIONS:(OPTIONAL:IT'S POSSIBLE TO USE WITHOUT SOLDERING)  
FOR THE MANUAL SOLDERING, SOLDERING IRON BIT TEMPERATURE IS 380℃ MAX. FOR 5 SECONDS MAX.



(PLEASE DO NOT ALLOW A GAP  
BETWEEN THE EDGE OF PCB AND CONNECTOR.)

(PLEASE MOUNT THE CONNECTOR AS LOCATED  
IN THE MIDDLE OF THE SIGNAL PAD OF PCB.)



3  
0-80UNF-2A  
OUTSIDE DRAWING

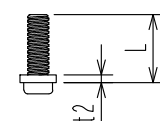


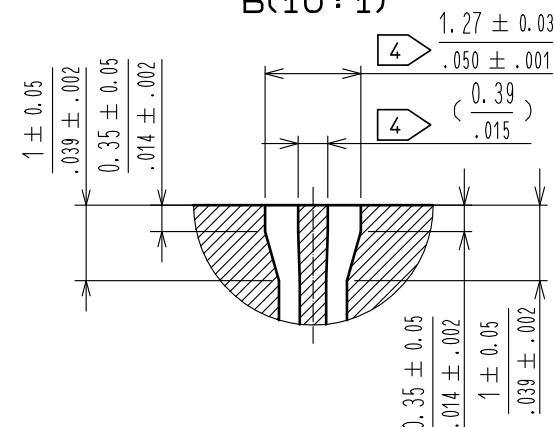
Figure 1: Dimensions of the Pad and Through Hole


Dimensions shown:

- Top width:  $5 \pm 0.03$
- Distance from edge to hole center:  $.197 \pm .001$
- Hole diameter:  $2 \times \phi 1.7 \pm 0.05$
- Hole wall thickness:  $.067 \pm .002$  (THROUGH HOLE)
- Pad thickness:  $2.2 \pm 0.05$
- Minimum pad diameter:  $4.3 / .169$  MIN
- Signal line width:  $B$

REGISTER FOR SIGNAL PAD AND GROUND PAD IS PROHIBITED.

(DRAWING CHANGED)  
B(10: 1)



2	STAINLESS STEEL	PASSIVATE	5	POLYETHER IMIDE						
1	BRASS	NICKEL PLATING	4	POLYETHER IMIDE						
			3	BERYLLIUM COPPER	GOLD PLATING					
NO.	MATERIAL	FINISH . REMARKS		NO.	MATERIAL	FINISH . REMARKS				
UNITS [mm/in]		SCALE 5 : 1		COUNT 3	DESCRIPTION OF REVISIONS DIS-D-00003038		DESIGNED HA. NISHIMURA	CHECKED MH. OGUSU	DATE 18. 04. 18	
 HIROSE ELECTRIC CO., LTD.	APPROVED : KY. SHIMIZU				16. 08. 30	DRAWING NO.			EDC-368795-00-01	
	CHECKED : TO. KATAYAMA				16. 08. 30	PART NO.			H2. 4-LR-SR2	
	DESIGNED : TP. MATSUMOTO				16. 08. 29	CODE NO.			CL338-0603-0-00	
	DRAWN : TP. MATSUMOTO				16. 08. 29					

# Mouser Electronics

Authorized Distributor

Click to View Pricing, Inventory, Delivery & Lifecycle Information:

[Hirose Electric:](#)

[H2.4-LR-SR2](#)