

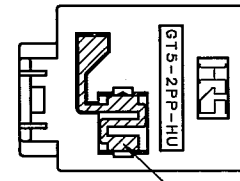
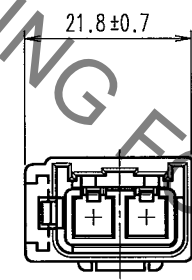
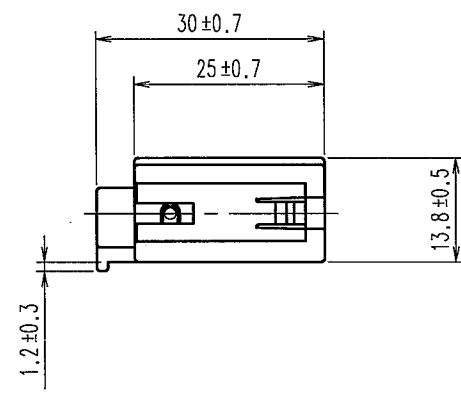
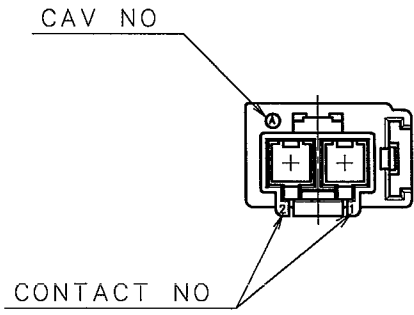
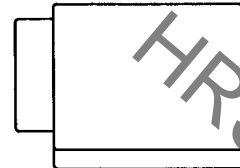
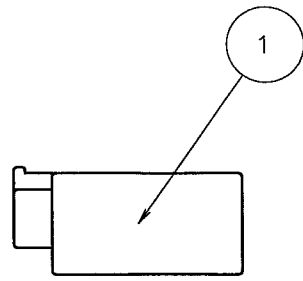
Aug.1.2021 Copyright 2021 HIROSE ELECTRIC CO., LTD. All Rights Reserved.
In case of consideration for using Automotive equipment / device which demand high reliability, kindly contact our sales window correspondents.

TO
AMC

A
B
C
D
E
F

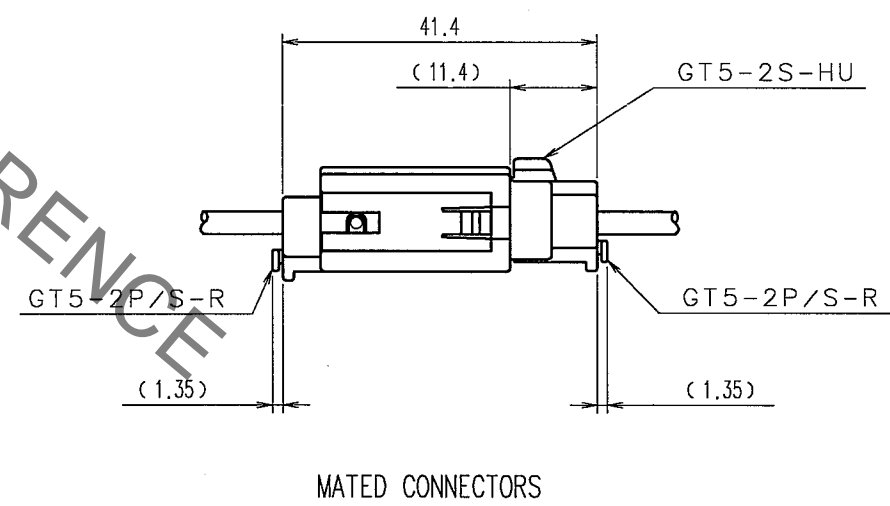
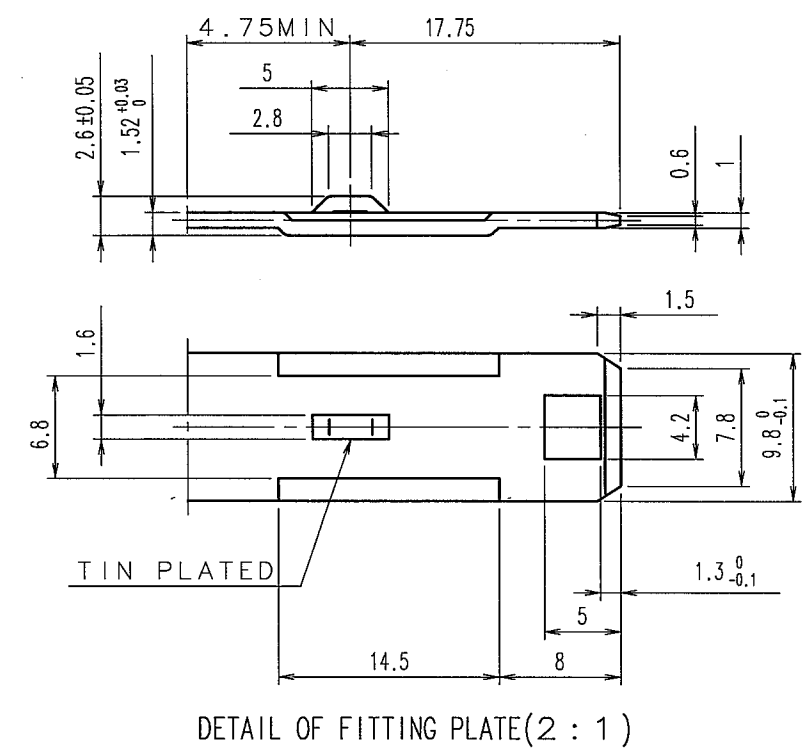
1 2 3 4 5 6 7 8

ELV. RoHS COMPLIANT



NOTE1. THIS CONNECTOR SHALL BE USED WITH A RETAINER
(CL755-0046-7).

5					6					7					8				
COUNT	DESCRIPTION OF REVISIONS	BY	CHKD	DATE	COUNT	DESCRIPTION OF REVISIONS	BY	CHKD	DATE	COUNT	DESCRIPTION OF REVISIONS	BY	CHKD	DATE	COUNT	DESCRIPTION OF REVISIONS	BY	CHKD	DATE
△				..	△				..	△				..	△				..
△				..	△				..	△				..	△				..
△				..	△				..	△				..	△				..



1	PBT	UL94HB, LIGHT GRAY	2	PHOSPHOR BRONZE	TIN PLATED, T=0.3
NO.	MATERIAL	FINISH, REMARKS	NO.	MATERIAL	FINISH, REMARKS
CODE NO. (OLD)			DRAWN	DESIGNED	CHECKED
			T. KUBOTA	T. SHISHIKURA	K. Aoto
			'07. 4. 26	'97. 1. 29	09. 4. 27
					09. 4. 27
					..
DRAWING NO.			PART NO.		
EDC3-165328-01			GT5-2PP-HU(70)		
SCALE			CODE NO.		
1 : 1			CL755-0045-4-70		
UNITS					
mm					

1 2 3 4 5 6 7 8

AMC

Mouser Electronics

Authorized Distributor

Click to View Pricing, Inventory, Delivery & Lifecycle Information:

[Hirose Electric:](#)

[GT5-2PP-HU\(70\)](#)