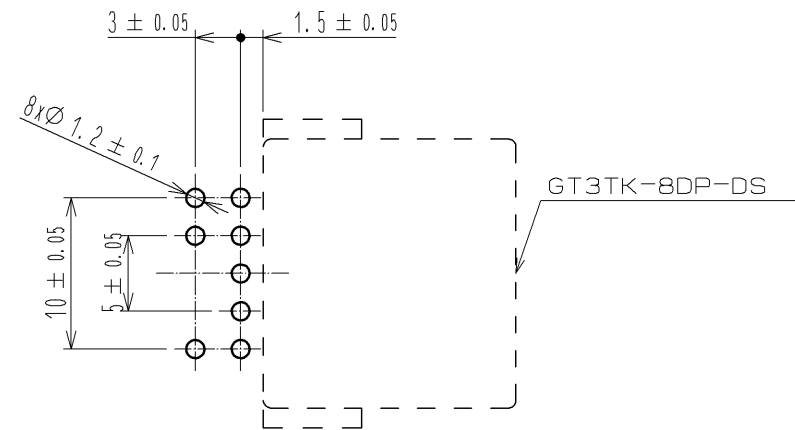
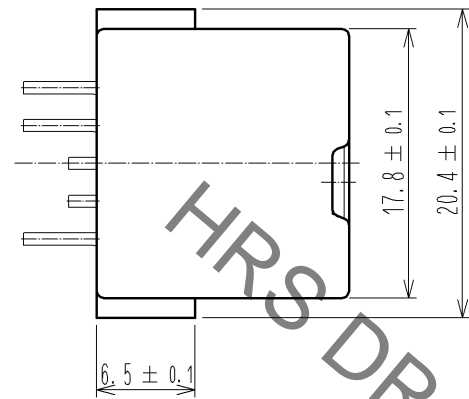
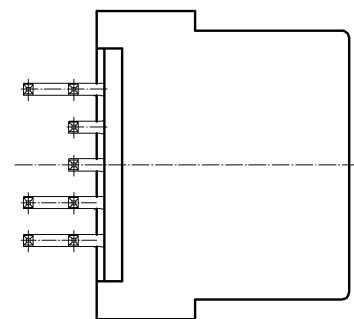
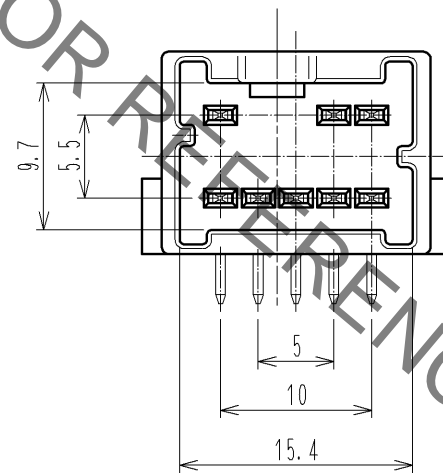
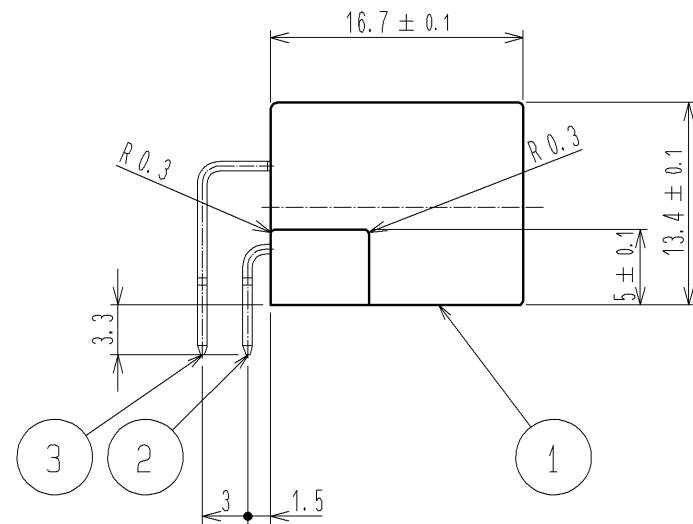
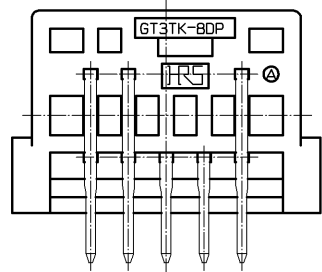


Jan.1.2022 Copyright 2022 HIROSE ELECTRIC CO., LTD. All Rights Reserved.
In case of consideration for using Automotive equipment / device which demand high reliability, kindly contact our sales window correspondents.

ELV, RoHS COMPLIANT



RECOMMENDED PCB BOARD LAYOUT



2	BRASS	TIN PLATING T=0.64			
1	PBT	BROWN	3	BRASS	TIN PLATING T=0.64
NO.	MATERIAL	FINISH , REMARKS	NO.	MATERIAL	FINISH , REMARKS
UNITS mm		SCALE 2 : 1	COUNT 	DESCRIPTION OF REVISIONS	DESIGNED
HIROSE ELECTRIC CO., LTD.		APPROVED : AR. SHIRAI	11.11.28	DRAWING NO.	EDC3-165631-01
		CHECKED : NA. HARUBAYASHI	11.11.26	PART NO.	GT3TK-8DP-DS
		DESIGNED : KT. MATSUDA	11.11.25	CODE NO.	CL753-0007-2-00
		DRAWN : KT. MATSUDA	11.11.25		1/1

Mouser Electronics

Authorized Distributor

Click to View Pricing, Inventory, Delivery & Lifecycle Information:

[Hirose Electric:](#)

[GT3TK-8DP-DS](#)