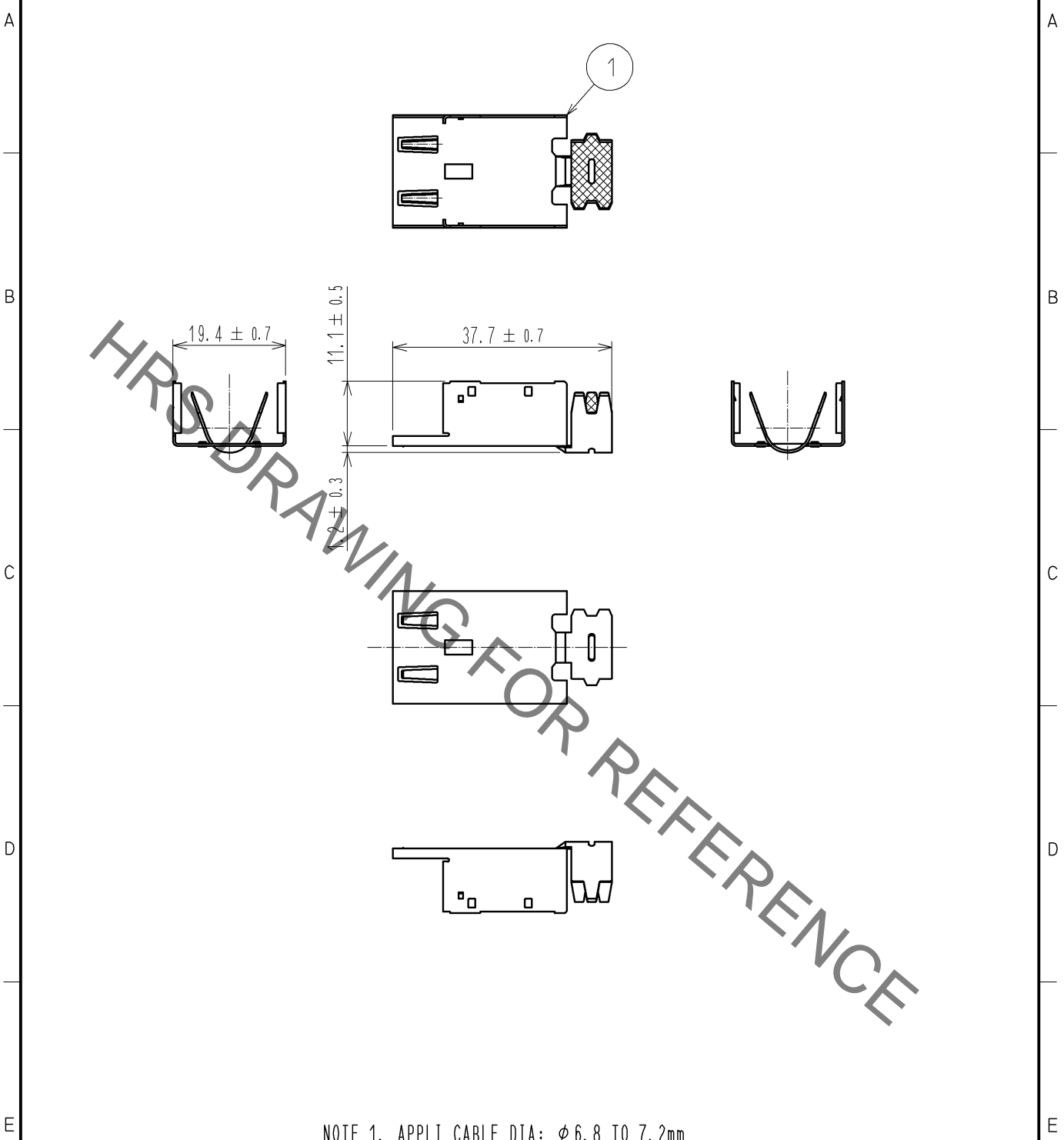


Sep.1.2021 Copyright 2021 HIROSE ELECTRIC CO., LTD. All Rights Reserved.
In case of consideration for using Automotive equipment / device which demand high reliability, kindly contact our sales window correspondents.

ELV, RoHS COMPLIANT



NOTE 1. APPLI CABLE DIA: $\phi 6.8$ TO 7.2mm

1	COPPER ALLOY	TIN PLATED						
NO.	MATERIAL	FINISH .	REMARKS	NO.	MATERIAL	FINISH .	REMARKS	
UNITS mm		SCALE 1 : 1	COUNT 	DESCRIPTION OF REVISIONS		DESIGNED	CHECKED	DATE
HIROSE ELECTRIC CO., LTD.		APPROVED	: NH. NAKATA	14. 03. 08	DRAWING NO. EDC4-169595-00			
		CHECKED	: TS. KUBOTA	14. 03. 07	PART NO. GT32-19DP-7CF			
		DESIGNED	: MH. SHOUJI	14. 03. 07	CODE NO. CL782-0033-8-00			
		DRAWN	: MH. SHOUJI	14. 03. 07	1/1			

Mouser Electronics

Authorized Distributor

Click to View Pricing, Inventory, Delivery & Lifecycle Information:

[Hirose Electric:](#)

[GT32-19DP-7CF](#)