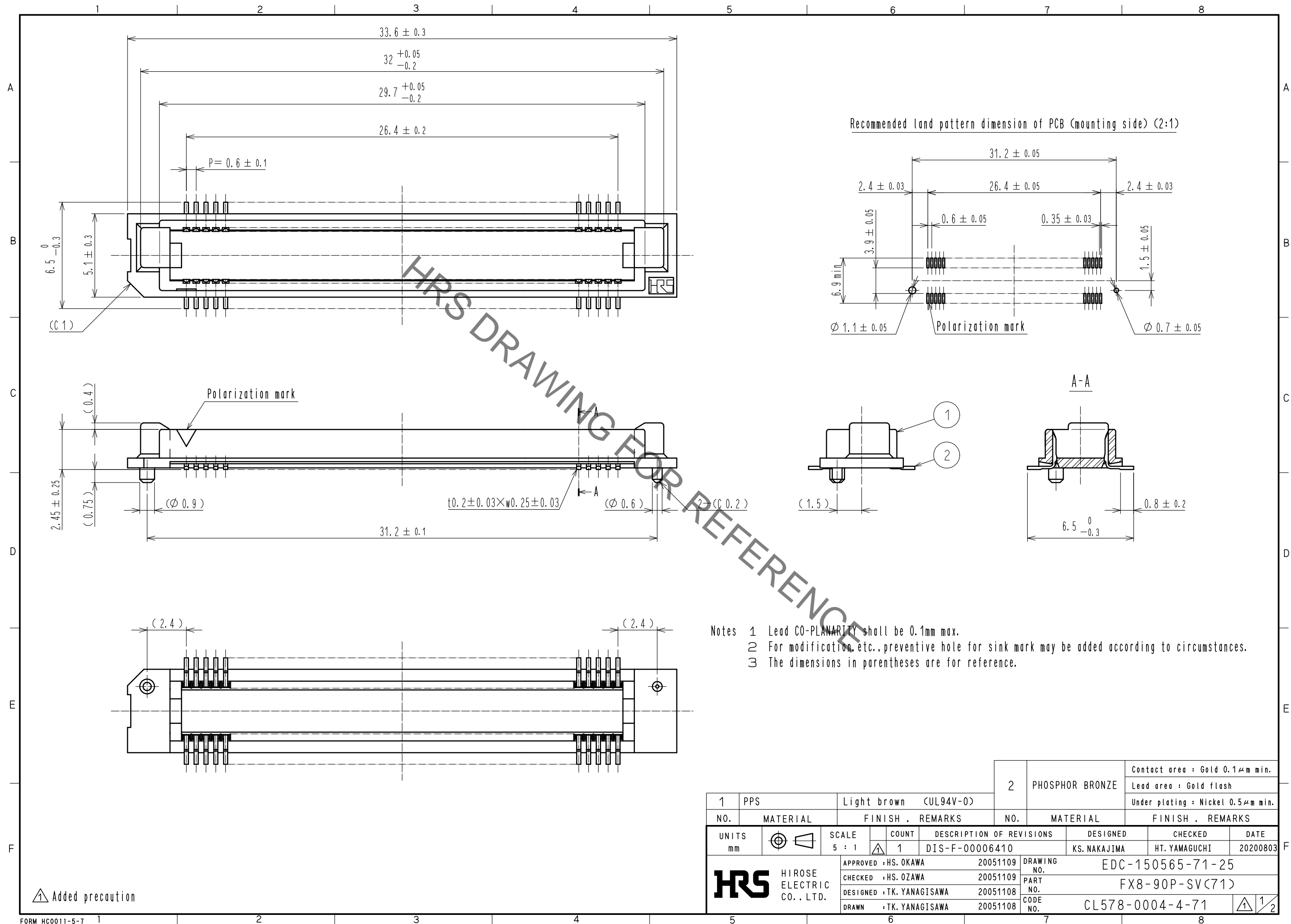


Sep.1.2021 Copyright 2021 HIROSE ELECTRIC CO., LTD. All Rights Reserved.
In case of consideration for using Automotive equipment / device which demand high reliability, kindly contact our sales window correspondents.



Added precaution

FORM HC0011-5-7

| | | | | | | | |
|---------------------------|--|---------------------------|-----------------------|--------------------------|--|------------------|-----------------------------------|
| 1 | | PPS | Light brown (UL94V-0) | 2 | | PHOSPHOR BRONZE | Contact area : Gold 0.1μm min. |
| NO. | | MATERIAL | FINISH . REMARKS | NO. | | MATERIAL | Lead area : Gold flash |
| | | | | | | | Under plating : Nickel 0.5μm min. |
| UNITS | | SCALE | COUNT | DESCRIPTION OF REVISIONS | | DESIGNED | CHECKED |
| mm | | 5 : 1 | 1 | DIS-F-00006410 | | KS. NAKAJIMA | HT. YAMAGUCHI |
| HRS | | APPROVED : HS. OKAWA | 20051109 | DRAWING NO. | | EDC-150565-71-25 | |
| HIROSE ELECTRIC CO., LTD. | | CHECKED : HS. OZAWA | 20051109 | PART NO. | | FX8-90P-SV(71) | |
| | | DESIGNED : TK. YANAGISAWA | 20051108 | CODE NO. | | CL578-0004-4-71 | |
| | | DRAWN : TK. YANAGISAWA | 20051108 | | | | |

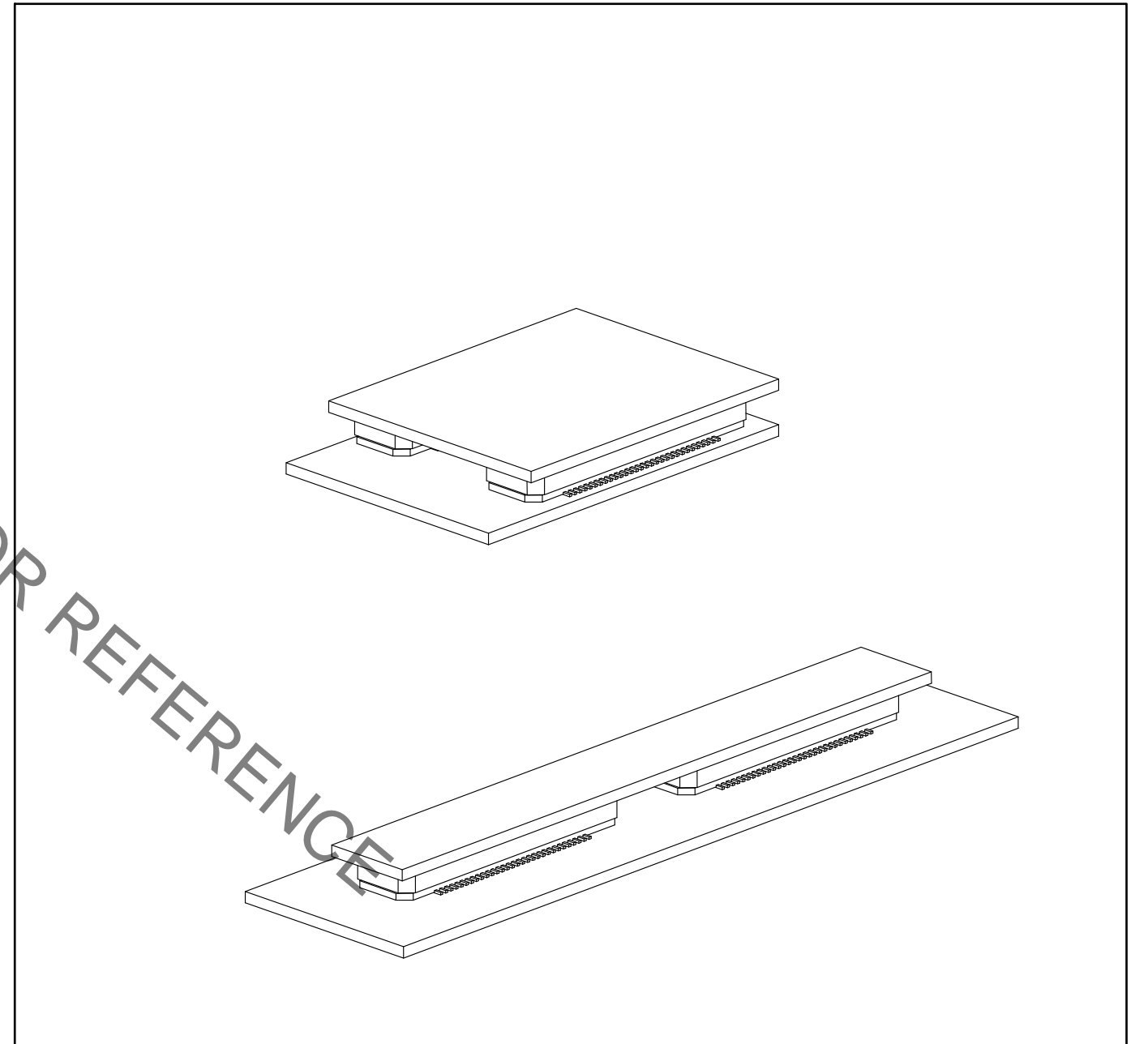
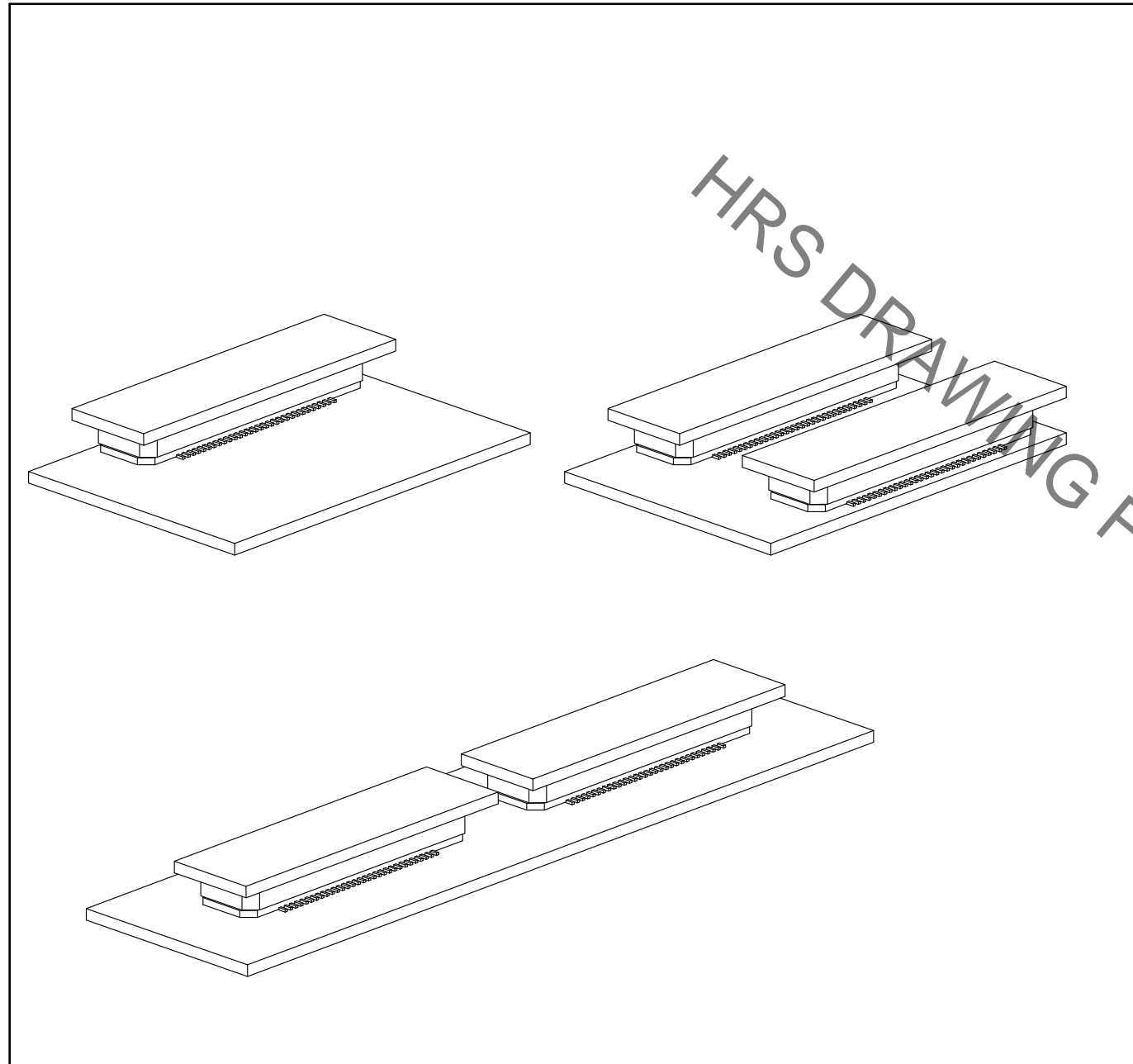
Sep.1.2021 Copyright 2021 HIROSE ELECTRIC CO., LTD. All Rights Reserved.
In case of consideration for using Automotive equipment / device which demand high reliability, kindly contact our sales window correspondents.

【Precaution】

When a board with multiple connectors mounted is mated, the connector may be damaged or deformed.
Please divide one side of the board so only one connector is mated per board.

OK

NG



HRS

| | |
|-------------|------------------|
| DRAWING NO. | EDC-150565-71-25 |
| PART NO. | FX8-90P-SV(71) |
| CODE NO. | CL578-0004-4-71 |

1/2

Mouser Electronics

Authorized Distributor

Click to View Pricing, Inventory, Delivery & Lifecycle Information:

[Hirose Electric:](#)

[FX8-90P-SV\(71\)](#)