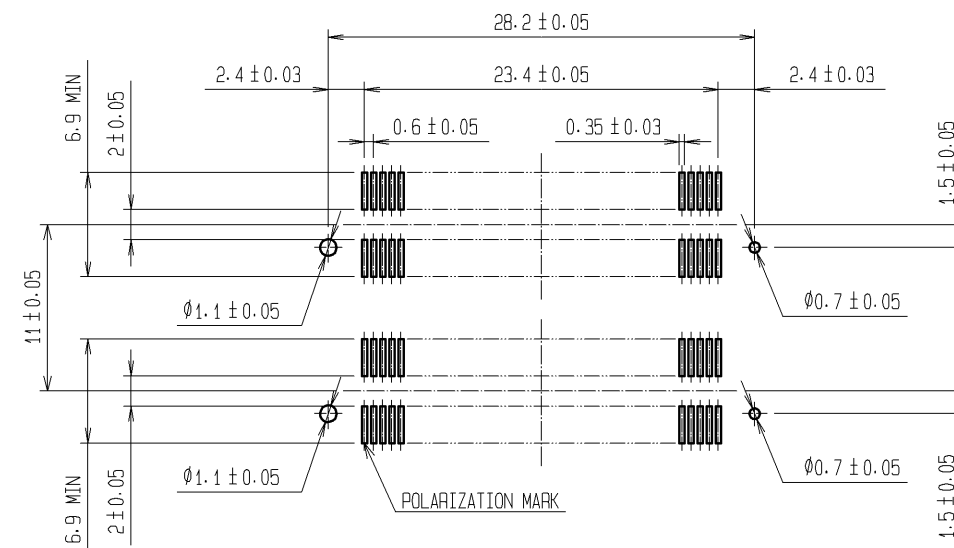



RECOMMENDED LAND PATTERN DIMENSION
OF PCB(MOUNTING SIDE)
(RECOMMENDED METAL MASK THICKNESS:0.15mm)

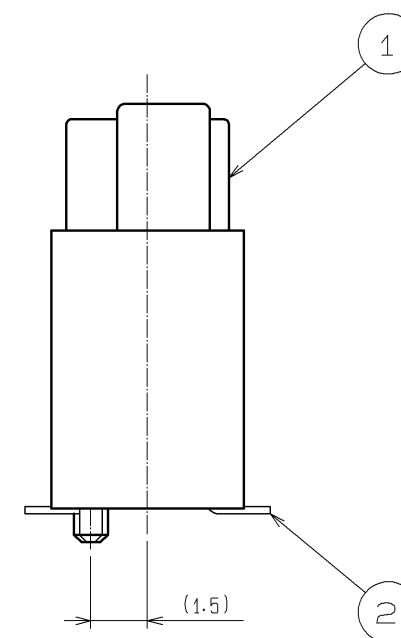
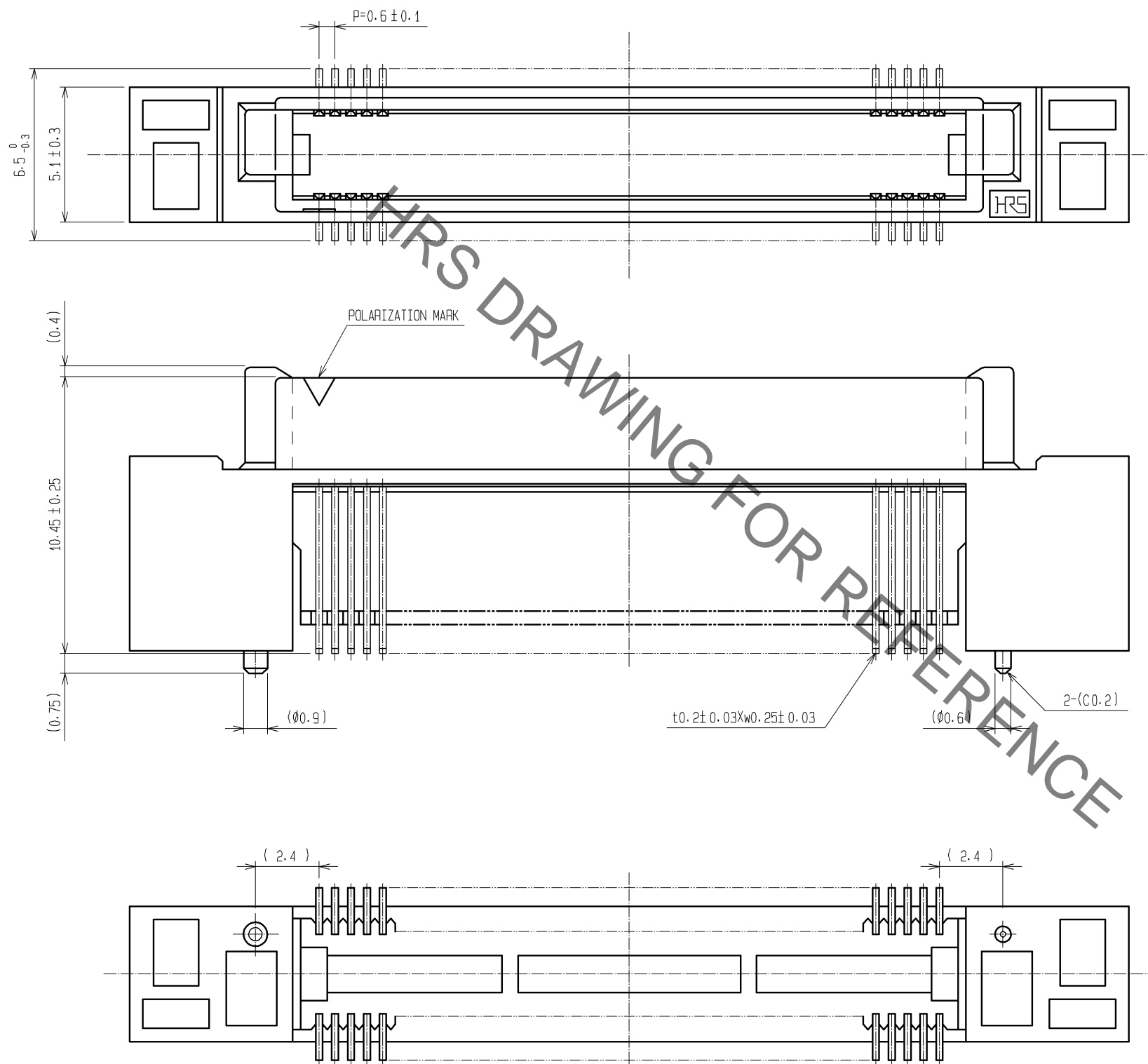


- NOTES
- 1 LEAD CO-PLANARITY SHALL BE 0.1mm MAX.
 - 2 AFTER MOUNTING BOARD, REF.NO.3 SHALL BE REMOVED.
 - 3 FOR MODIFICATION, ETC., PREVENTIVE HOLE FOR SINK MARK MAY BE ADDED DEPENDS ON CIRCUMSTANCES.
 - 4 THE DIMENSIONS IN PARENTHESES ARE FOR REFERENCE.

| | | | | | | | | | | | | | |
|---|--|----------|-------------------------|------------------|-----------------------|--------------------------|----------|-----------------|--------------------------------|--|---------|------|-----|
| 1. 3. 4 | | | PPS | | LIGHT BROWN (UL94V-0) | | 2 | PHOSPHOR BRONZE | CONTACT AREA : GOLD 0.1μm min. | | | | |
| | | | | | | | | | LEAD AREA:TIN-PLATING 1μm min. | | | | |
| | | | | | | | | | UNDER PLATING:NICKEL 1μm min. | | | | |
| NO. | | MATERIAL | | FINISH . REMARKS | | NO. | MATERIAL | | FINISH . REMARKS | | | | |
| UNITS mm | | | SCALE 2 : 1 | | COUNT | DESCRIPTION OF REVISIONS | | | DESIGNED | | CHECKED | DATE | |
|  HIROSE ELECTRIC CO., LTD. | | | APPROVED : HS. OKAWA | | | 11. 03. 10 | | DRAWING NO. | EDC3-150952-25 | | | | |
| | | | CHECKED : HT. YAMAGUCHI | | | 11. 03. 10 | | PART NO. | FX8C-80/80P11-SV6J(71) | | | | |
| | | | DESIGNED : AH. EDASHIGE | | | 11. 03. 07 | | CODE NO. | CL578-0753-1-71 | | | | 1/2 |
| | | | DRAWN : AH. EDASHIGE | | | 11. 03. 07 | | | | | | | |

Sep.1.2021 Copyright 2021 HIROSE ELECTRIC CO., LTD. All Rights Reserved.
In case of consideration for using Automotive equipment / device which demand high reliability, kindly contact our sales window correspondents.

DETAIL AFTER REMOVING JOINT



NOTES THE DIMENSIONS IN PARENTHESES ARE FOR REFERENCE.

| | | | | |
|-----|-------------|------------------------|--|--|
| HRS | DRAWING NO. | EDC3-150952-25 | | |
| | PART NO. | FX8C-80/80P11-SV6J(71) | | |
| | CODE NO. | CL578-0753-1-71 | | |
| | | △ 2/2 | | |

Mouser Electronics

Authorized Distributor

Click to View Pricing, Inventory, Delivery & Lifecycle Information:

[Hirose Electric:](#)

[FX8C-80/80P11-SV6J\(71\)](#)