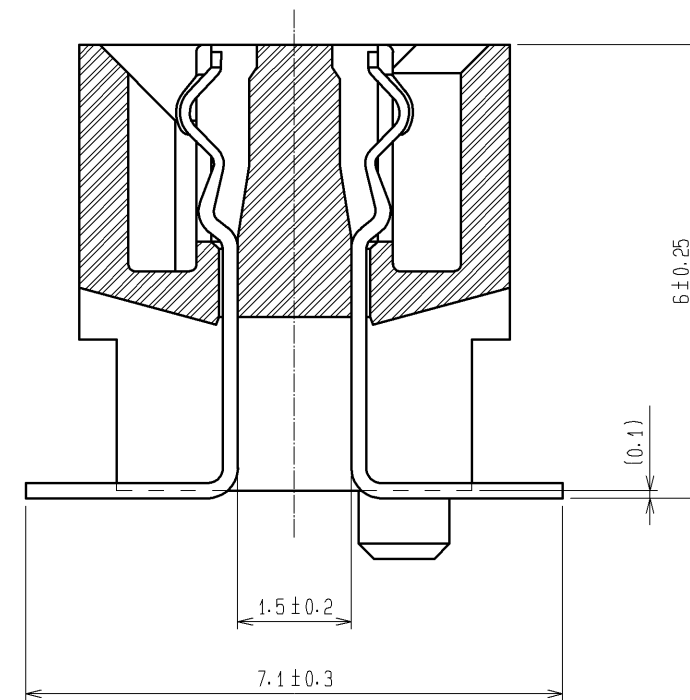
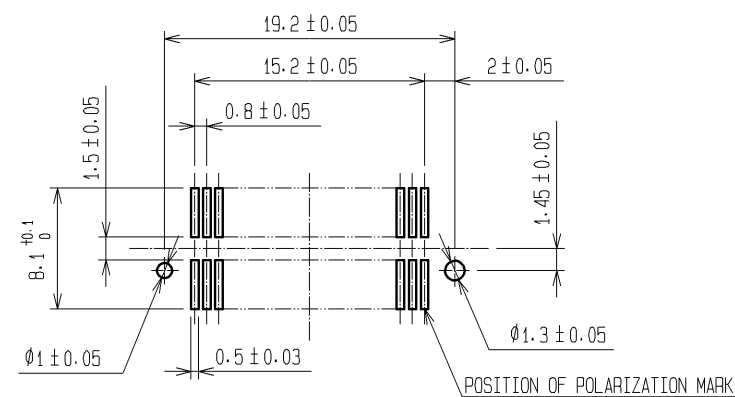


A-A (10:1)



- NOTE
- 1 HRS MARK SHALL BE OPTIONAL.
  - 2 LEAD CO-PLANARITY SHALL BE 0.1mm MAX.
  - 3 TUBE PACKAGING SHALL BE APPLIED FOR THIS PRODUCT. SEE NEXT PAGE FOR DETAILS.
  - 4 THIS PRODUCT HAS TAPE FOR VACUUM PICKUP. SEE NEXT PAGE FOR DETAIL OF STICKING POSITION, ETC.
  - 5 FOR MODIFICATION, ETC, PREVENTIVE HOLE FOR SINK MARK MAY BE ADDED ACCORDING TO CIRCUMSTANCES.
  - 6 THE DIMENSIONS IN PARENTHESES ARE FOR REFERENCE.

RECOMMENDED LAND PATTERN DIMENSION OF PCB (MOUNTING SIDE)  
(RECOMMENDED METAL MASK THICKNESS: 0.15mm)

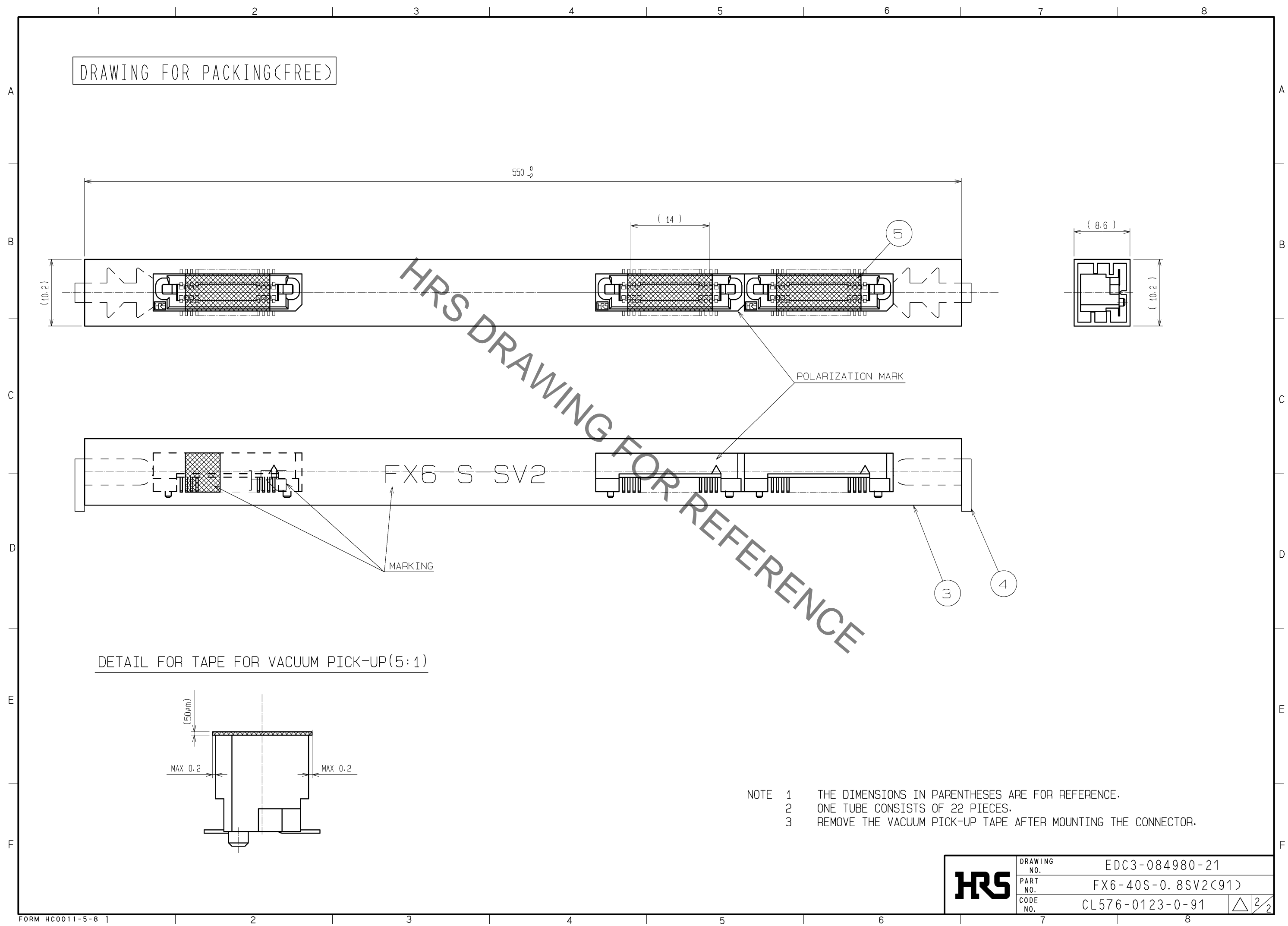


2	PHOSPHOR BRONZE	CONTACT AREA: GOLD 0.1μm min.				
		LEAD AREA: TIN-PLATING 1μm min.				
		UNDER PLATING: NICKEL 2μm min.				
1	PPS	LIGHT BROWN (UL94V-0)	5	POLYIMIDE	(TAPE FOR VUCUUM PICKUP)	
			4	PVC	(STOPPER)	
			3	PVC	(TUBE)	
NO.	MATERIAL	FINISH . REMARKS	NO.	MATERIAL	FINISH . REMARKS	
UNITS mm		SCALE 2 : 1	COUNT 	DESCRIPTION OF REVISIONS		
			DESIGNED	CHECKED	DATE	
			APPROVED : HS. OKAWA	08. 07. 23	DRAWING NO.	EDC3-084980-21
			CHECED : HT. YAMAGUCHI	08. 07. 23	PART NO.	FX6-40S-0.8SV2(91)
			DESIGNED : SY. KAMIGA	08. 07. 22	CODE NO.	CL576-0123-0-91
			DRAWN : HK. SUNADORI	08. 07. 18		

HRS

HIROSE  
ELECTRIC  
CO., LTD.

Sep.1.2021 Copyright 2021 HIROSE ELECTRIC CO., LTD. All Rights Reserved.  
In case of consideration for using Automotive equipment / device which demand high reliability, kindly contact our sales window correspondents.



- NOTE 1 THE DIMENSIONS IN PARENTHESES ARE FOR REFERENCE.  
2 ONE TUBE CONSISTS OF 22 PIECES.  
3 REMOVE THE VACUUM PICK-UP TAPE AFTER MOUNTING THE CONNECTOR.

HRS	DRAWING NO.	EDC3-084980-21	
	PART NO.	FX6-40S-0.8SV2(91)	
	CODE NO.	CL576-0123-0-91	$\triangle$ 2/2

# Mouser Electronics

Authorized Distributor

Click to View Pricing, Inventory, Delivery & Lifecycle Information:

[Hirose Electric:](#)

[FX6-40S-0.8SV2\(91\)](#)