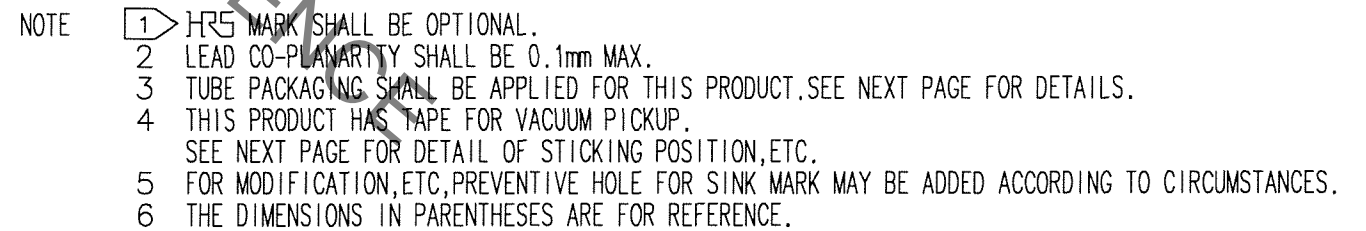
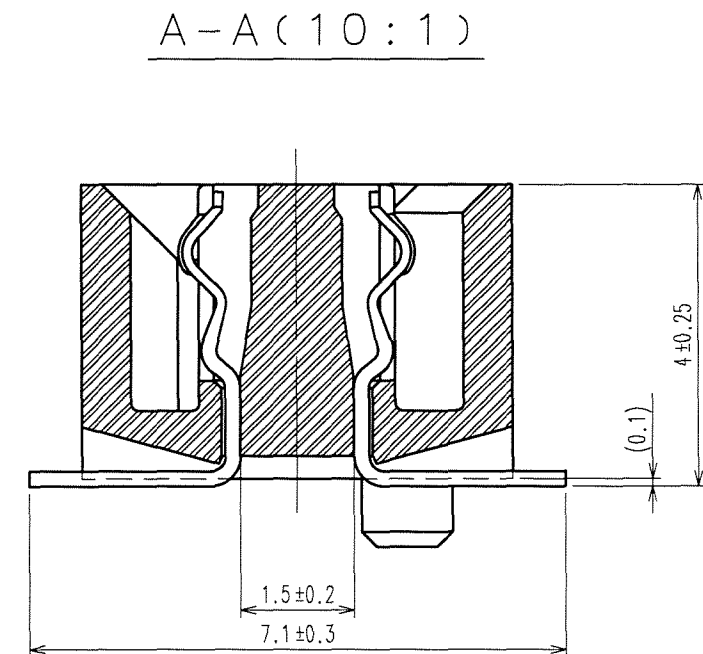
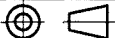



TO



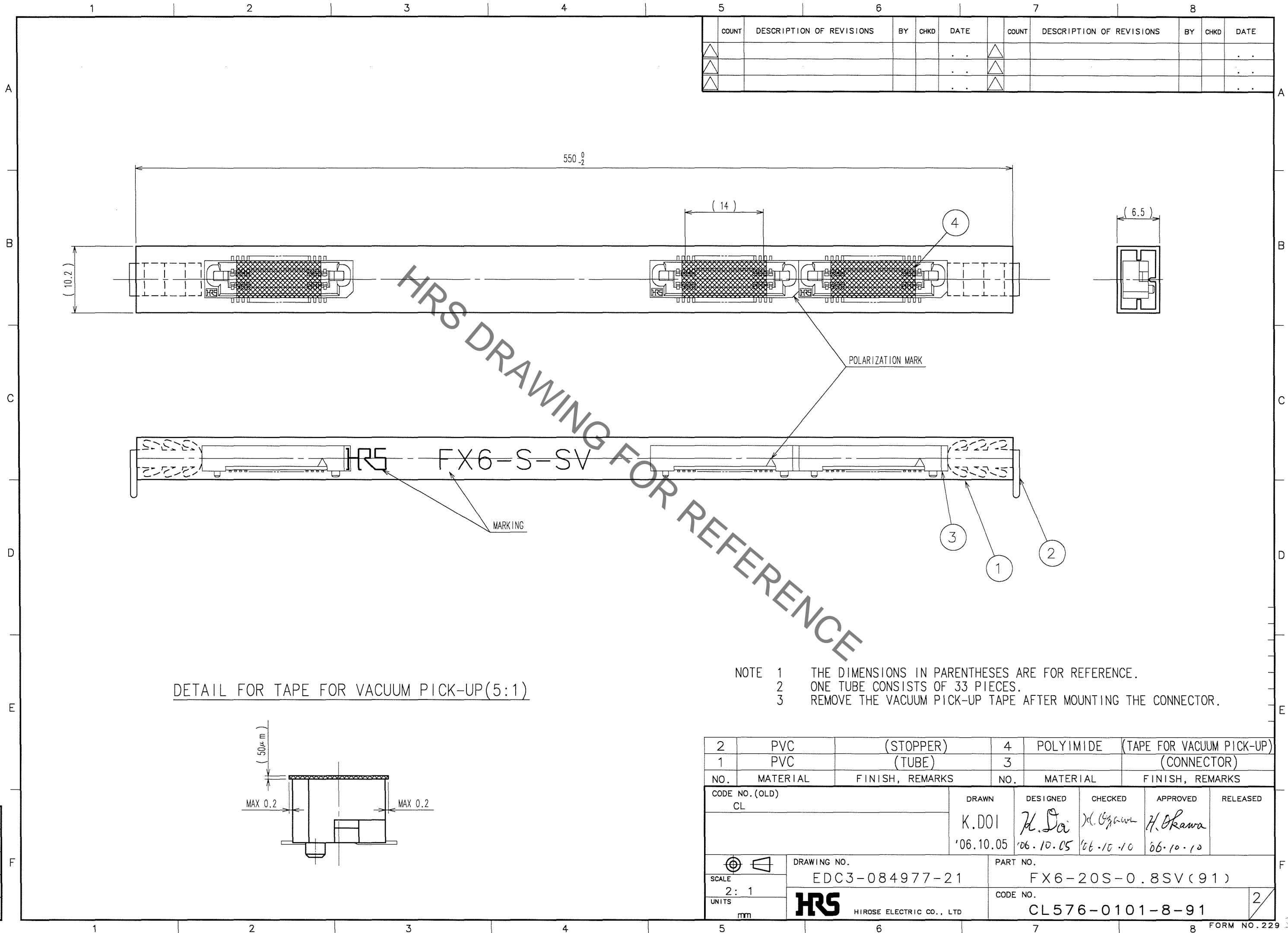
	COUNT	DESCRIPTION OF REVISIONS	BY	CHKD	DATE		COUNT	DESCRIPTION OF REVISIONS	BY	CHKD	DATE
△					. .	△					. .
△					. .	△					. .
△					. .	△					. .



1	PPS	LIGHT BROWN (UL94V-0)	2	PHOSPHOR BRONZE	CONTACT AREA: GOLD 0.1μm min.		
					LEAD AREA: TIN-PLATING 1μm min.		
					UNDER PLATING: NICKEL 2μm min.		
NO.	MATERIAL	FINISH, REMARKS	NO.	MATERIAL	FINISH, REMARKS		
CODE NO. (OLD)			DRAWN	DESIGNED	CHECKED	APPROVED	RELEASED
			K.DOI '06.10.05	H. Saito '06.10.05	H. Ogawa '06.10.10	H. Okawa '06.10.10	. .
		DRAWING NO.		PART NO.			
SCALE 2 : 1		EDC3-084977-21		FX6-20S-0.8SV(91)			
UNITS mm		 HIROSE ELECTRIC CO., LTD		CODE NO.			1/2
				CL576-0101-8-91			

Sep.1.2021 Copyright 2021 HIROSE ELECTRIC CO., LTD. All Rights Reserved.  
In case of consideration for using Automotive equipment / device which demand high reliability, kindly contact our sales window correspondents.

TO



# Mouser Electronics

Authorized Distributor

Click to View Pricing, Inventory, Delivery & Lifecycle Information:

[Hirose Electric:](#)

[FX6-20S-0.8SV\(91\)](#)