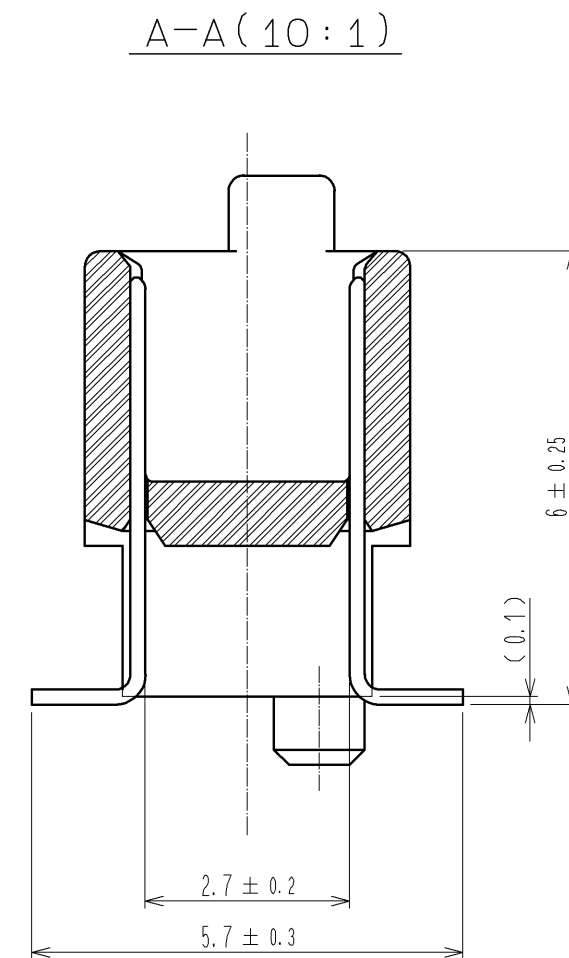
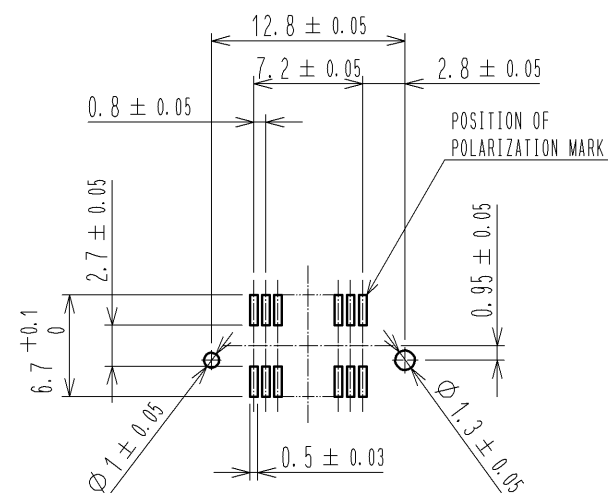


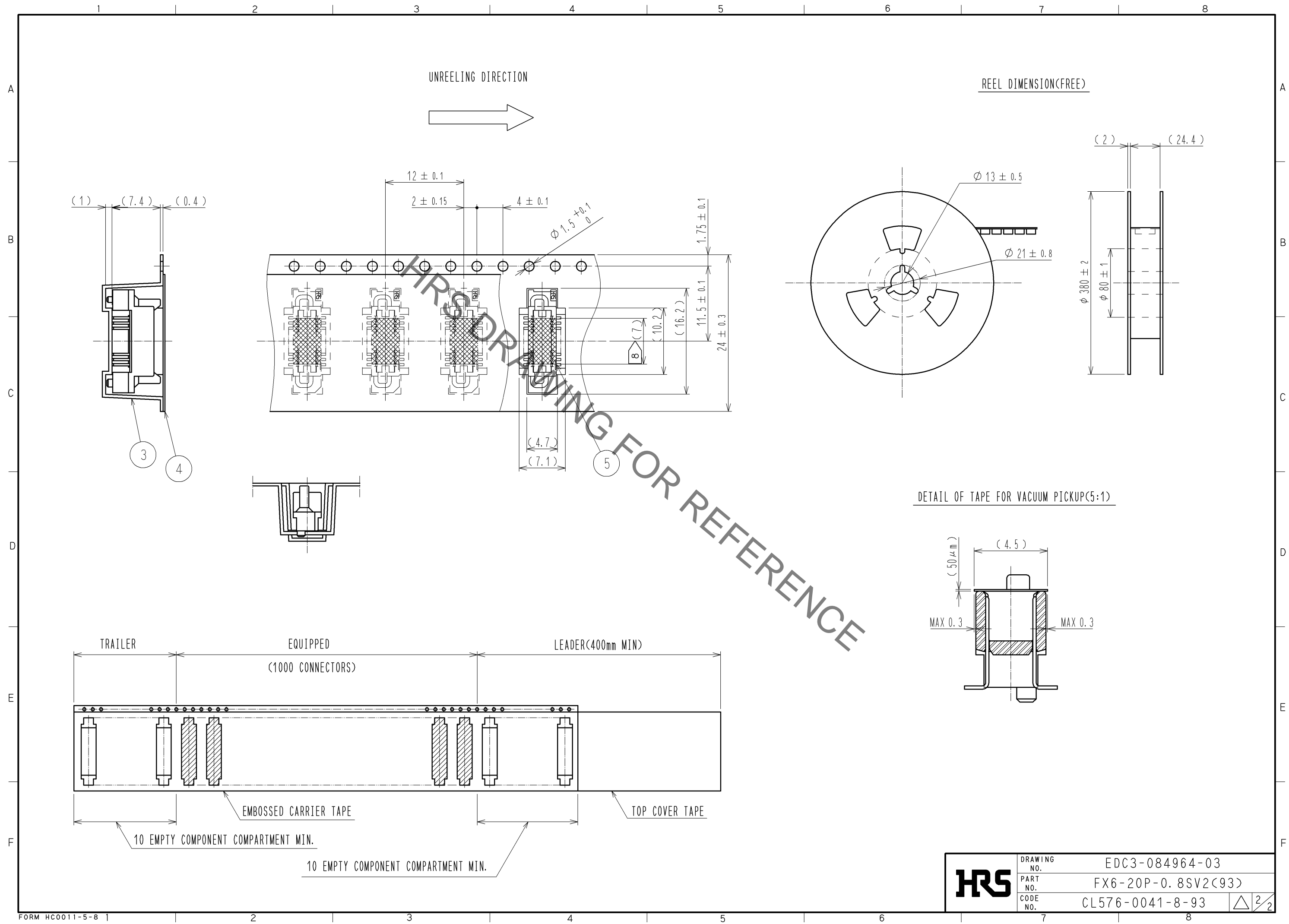
RECOMMENDED LAND PATTERN DIMENSION OF PCB (MOUNTING SIDE)



- NOTE
- 1 HRS MARK SHALL BE OPTIONAL.
  - 2 LEAD CO-PLANARITY SHALL BE 0.1mm MAX.
  - 3 EMBOSSED CARRIER TAPE PACKAGING SHALL BE APPLIED TO THIS PRODUCT. SEE NEXT PAGE FOR DETAILS.
  - 4 THIS PRODUCT HAS TAPE FOR VACUUM PICKUP. SEE NEXT PAGE FOR DETAIL OF STICKING POSITION, ETC.
  - 5 FOR MODIFICATION, ETC. PREVENTIVE HOLE FOR SINK MARK MAY BE ADDED ACCORDING TO CIRCUMSTANCES.
  - 6 THE DIMENSIONS IN PARENTHESES ARE FOR REFERENCE.
  - 7 1 REEL : 1000 CONNECTORS.
  - 8 REMOVE THE VACUUM PICKUP TAPE AFTER MOUNTING THE CONNECTOR.

2	PHOSPHOR BRONZE	CONTACT AREA: GOLD 0.1 $\mu$ m min.		5	POLYIMIDE	(TAPE FOR VACUUM PICKUP)
		LEAD AREA: TIN-PLATING 1 $\mu$ m min.		4	POLYESTER	(COVER TAPE)
		UNDER PLATING: NICKEL 1 $\mu$ m min.		3	POLYSTYRENE	(EMBOSSED CARRIER TAPE)
1	PPS	LIGHT BROWN (UL94V-0)				
NO. MATERIAL		FINISH, REMARKS		NO. MATERIAL		FINISH, REMARKS
UNITS mm		SCALE 2 : 1	COUNT △	DESCRIPTION OF REVISIONS		DESIGNED CHECKED DATE
<b>HRS</b> HIROSE ELECTRIC CO., LTD.		APPROVED : HS. OKAWA		13.08.21	DRAWING NO. EDC3-084964-03	
		CHECKED : HT. YAMAGUCHI		13.08.21	PART NO. FX6-20P-0.8SV2(93)	
		DESIGNED : TH. SANO		13.08.21	CODE NO. CL576-0041-8-93	
		DRAWN : TH. SANO		13.08.21	△ 1/2	

Aug.1.2021 Copyright 2021 HIROSE ELECTRIC CO., LTD. All Rights Reserved.  
In case of consideration for using Automotive equipment / device which demand high reliability, kindly contact our sales window correspondents.



<b>HRS</b>	DRAWING NO.	EDC3-084964-03
	PART NO.	FX6-20P-0.8SV2(93)
	CODE NO.	CL576-0041-8-93
		2/2

# Mouser Electronics

Authorized Distributor

Click to View Pricing, Inventory, Delivery & Lifecycle Information:

[Hirose Electric:](#)

[FX6-20P-0.8SV2\(93\)](#)