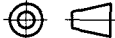

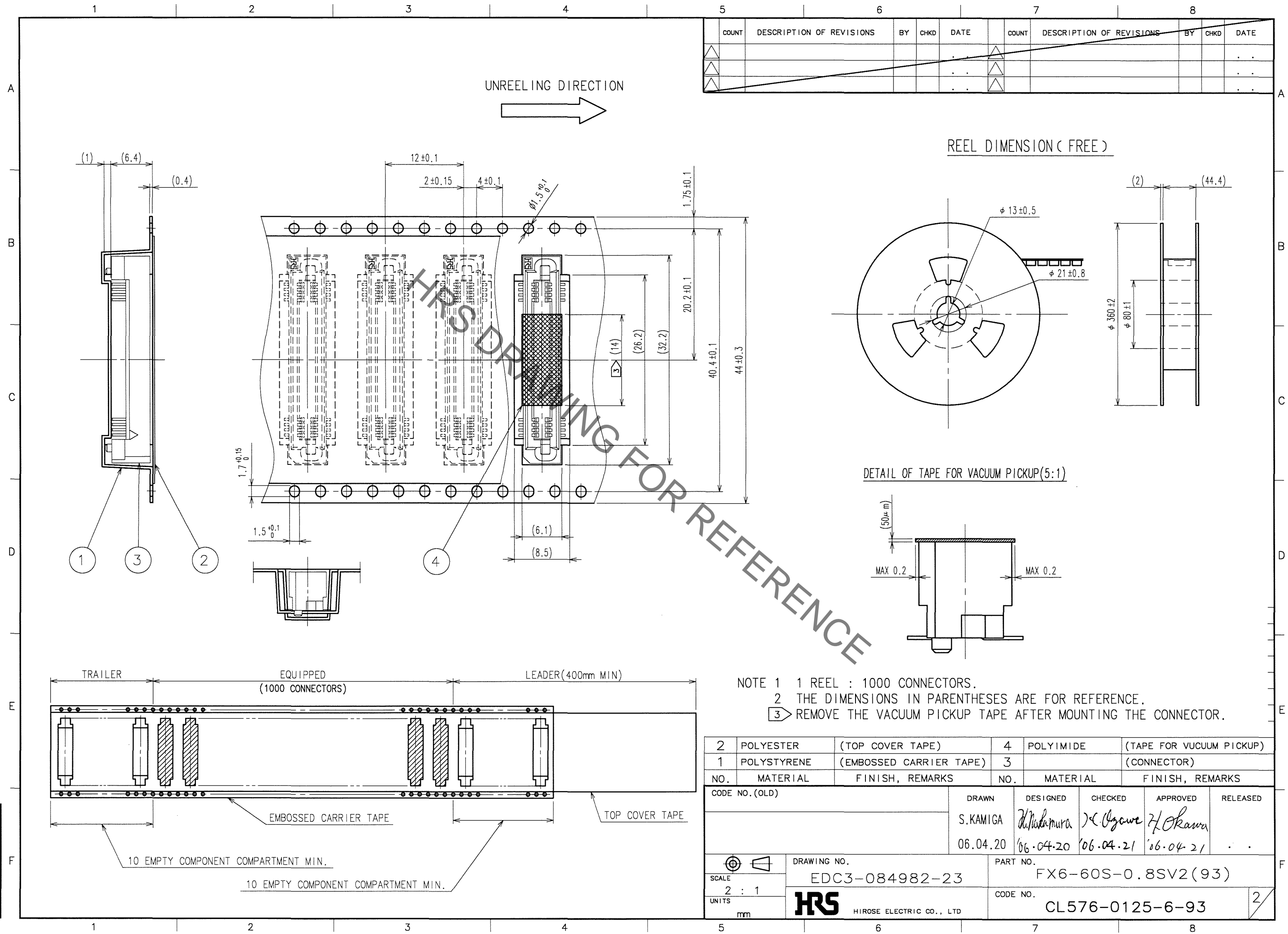


1	PPS	LIGHT BROWN (UL94V-0)	2	PHOSPHOR BRONZE	CONTACT AREA:GOLD 0.1μm min.		
					LEAD AREA:TIN-PLATING 1μm min.		
					UNDER PLATING:NICKEL 2μm min.		
NO.	MATERIAL	FINISH, REMARKS	NO.	MATERIAL	FINISH, REMARKS		
CODE NO. (OLD)			DRAWN	DESIGNED	CHECKED	APPROVED	RELEASED
			S.KAMIGA 06.04.20	K. Nakamura 06.04.20	K. Ogawa 06.04.21	H. Okawa 06.04.21	. .
		DRAWING NO.		PART NO.			
SCALE 2 : 1 mm		EDC3-084982-23		FX6-60S-0.8SV2(93)			
 HIROSE ELECTRIC CO., LTD		CODE NO.				CL576-0125-6-93	
						1/2	

Jan.1.2022 Copyright 2022 HIROSE ELECTRIC CO., LTD. All Rights Reserved.
In case of consideration for using Automotive equipment / device which demand high reliability, kindly contact our sales window correspondents.



Mouser Electronics

Authorized Distributor

Click to View Pricing, Inventory, Delivery & Lifecycle Information:

[Hirose Electric:](#)

[FX6-60S-0.8SV2\(93\)](#)