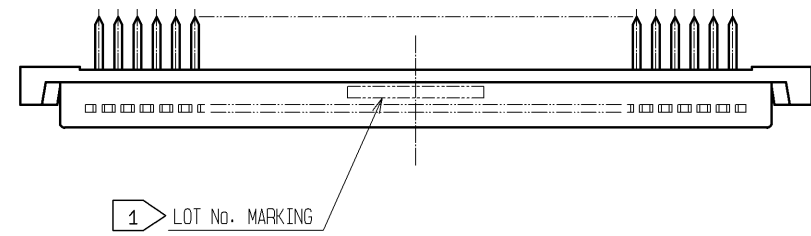
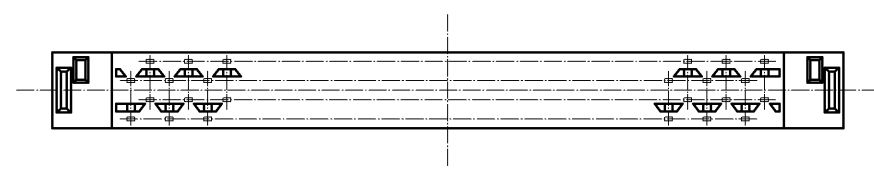
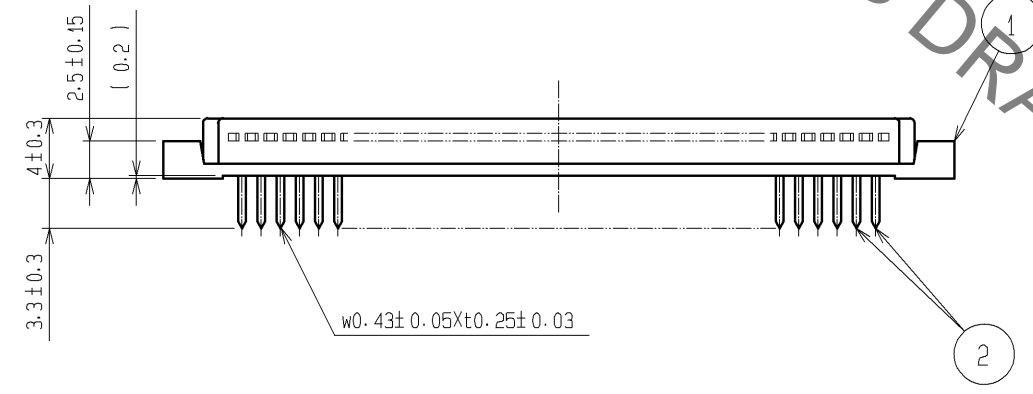
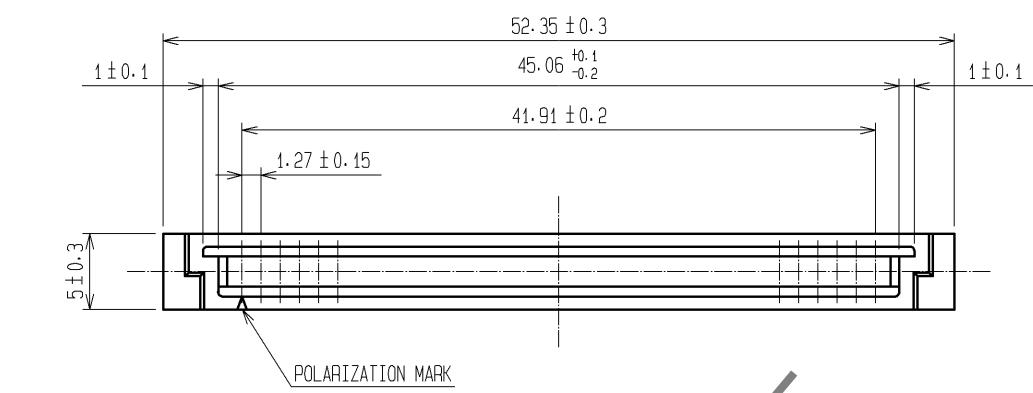
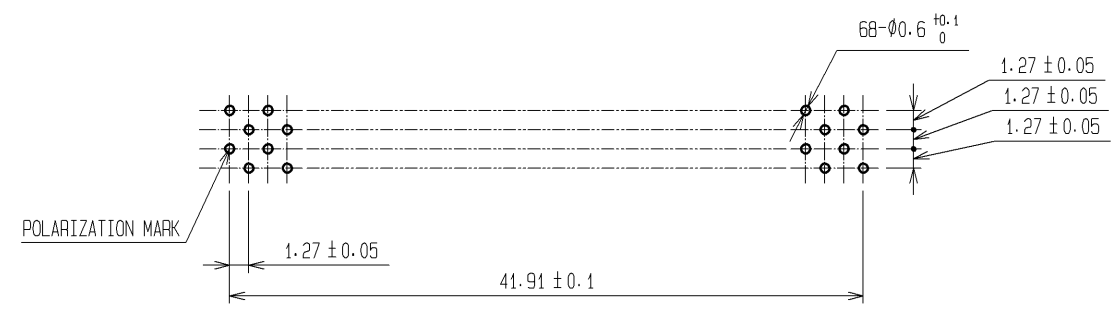


Sep.1.2021 Copyright 2021 HIROSE ELECTRIC CO., LTD. All Rights Reserved.
In case of consideration for using Automotive equipment / device which demand high reliability, kindly contact our sales window correspondents.



RECOMMENDED PC BOARD HOLE PATTERN
(MOUNTING SIDE)



- NOTES 1 LOT No. SHALL BE INDICATED AT OPPTIONAL POSITION.
2 THE DIMENSIONS IN PARENTHESES ARE FOR REFERENCE.

				2		PHOSPHOR BRONZE		CONTACT AREA:GOLD 0.2μm min.											
1								POLYAMIDE		BEIGE		UL94V-0		DIP AREA:TIN-PLATING 1.2μm min.					
														UNDER PLATING:NICKEL 1μm min.					
NO.		MATERIAL		FINISH		REMARKS		NO.		MATERIAL		FINISH		REMARKS					
UNITS mm				SCALE 2 : 1				COUNT		DESCRIPTION OF REVISIONS				DESIGNED		CHECKED		DATE	
		HIROSE ELECTRIC CO., LTD.		APPROVED : HS. OKAWA				07. 08. 06				DRAWING NO.		EDC3-082916-21					
				CHECED : HS. OZAWA				07. 08. 06				PART NO.		FX4C-68P-1. 27DSA (71)					
				DESIGNED : SY. KAMIGA				07. 08. 06				CODE NO.		CL574-0006-4-71					
				DRAWN : HK. SUNADORI				07. 08. 06						1/1					
5				6				7				8							

Mouser Electronics

Authorized Distributor

Click to View Pricing, Inventory, Delivery & Lifecycle Information:

[Hirose Electric:](#)

[FX4C-68P-1.27DSA\(71\)](#)