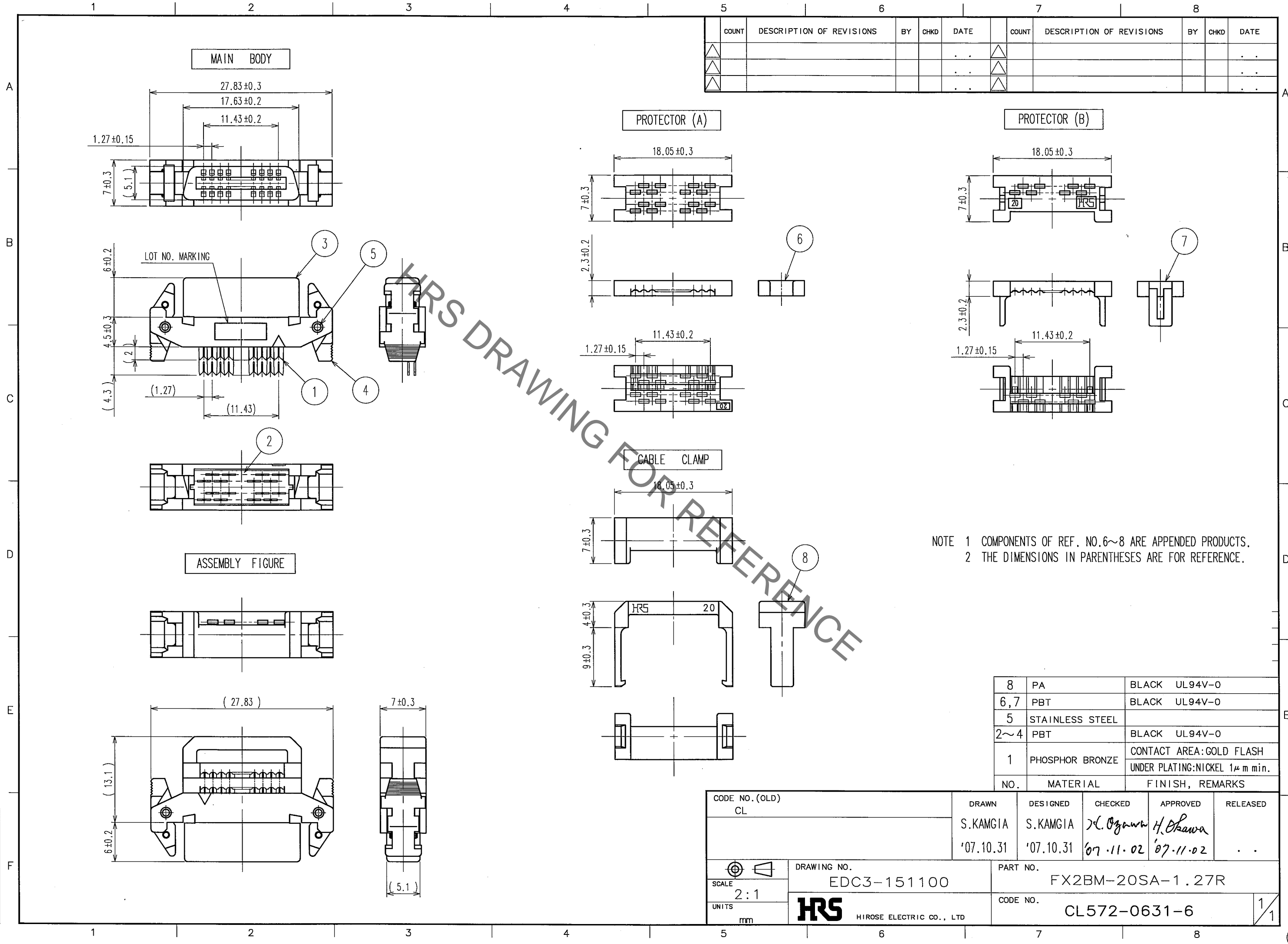


Sep.1.2021 Copyright 2021 HIROSE ELECTRIC CO., LTD. All Rights Reserved.
In case of consideration for using Automotive equipment / device which demand high reliability, kindly contact our sales window correspondents.

TO
PCK



NOTE 1 COMPONENTS OF REF. NO.6~8 ARE APPENDED PRODUCTS.
2 THE DIMENSIONS IN PARENTHESES ARE FOR REFERENCE.

8	PA	BLACK	UL94V-0
6,7	PBT	BLACK	UL94V-0
5	STAINLESS STEEL		
2~4	PBT	BLACK	UL94V-0
1	PHOSPHOR BRONZE	CONTACT AREA:GOLD FLASH	
		UNDER PLATING:NICKEL 1μm min.	
NO.	MATERIAL	FINISH, REMARKS	

CODE NO. (OLD) CL	DRAWN S.KAMGIA '07.10.31	DESIGNED S.KAMGIA '07.10.31	CHECKED H. Ogawa '07.11.02	APPROVED H. Okawa '07.11.02	RELEASED ..
SCALE 2:1	DRAWING NO. EDC3-151100	PART NO. FX2BM-20SA-1.27R			
UNITS mm	HRS HIROSE ELECTRIC CO., LTD		CODE NO. CL572-0631-6		1/1

Mouser Electronics

Authorized Distributor

Click to View Pricing, Inventory, Delivery & Lifecycle Information:

[Hirose Electric:](#)

[FX2BM-20SA-1.27R](#)