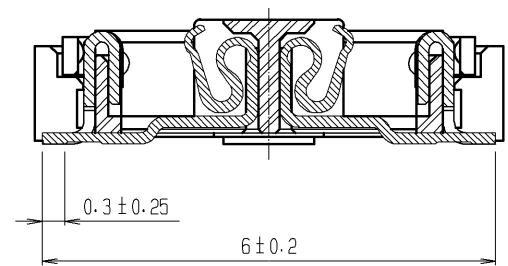
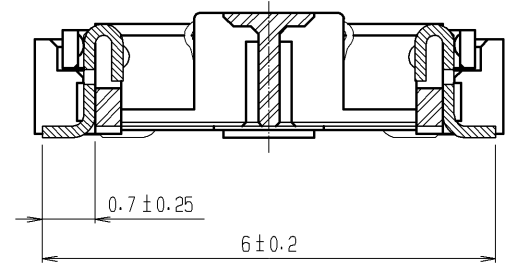


RECOMMENDED LAND PATTERN DIMENSION OF PCB
(RECOMMENDED METAL MASK THICKNESS: 0.15mm)

A-A (10 : 1)



B-B (10 : 1)

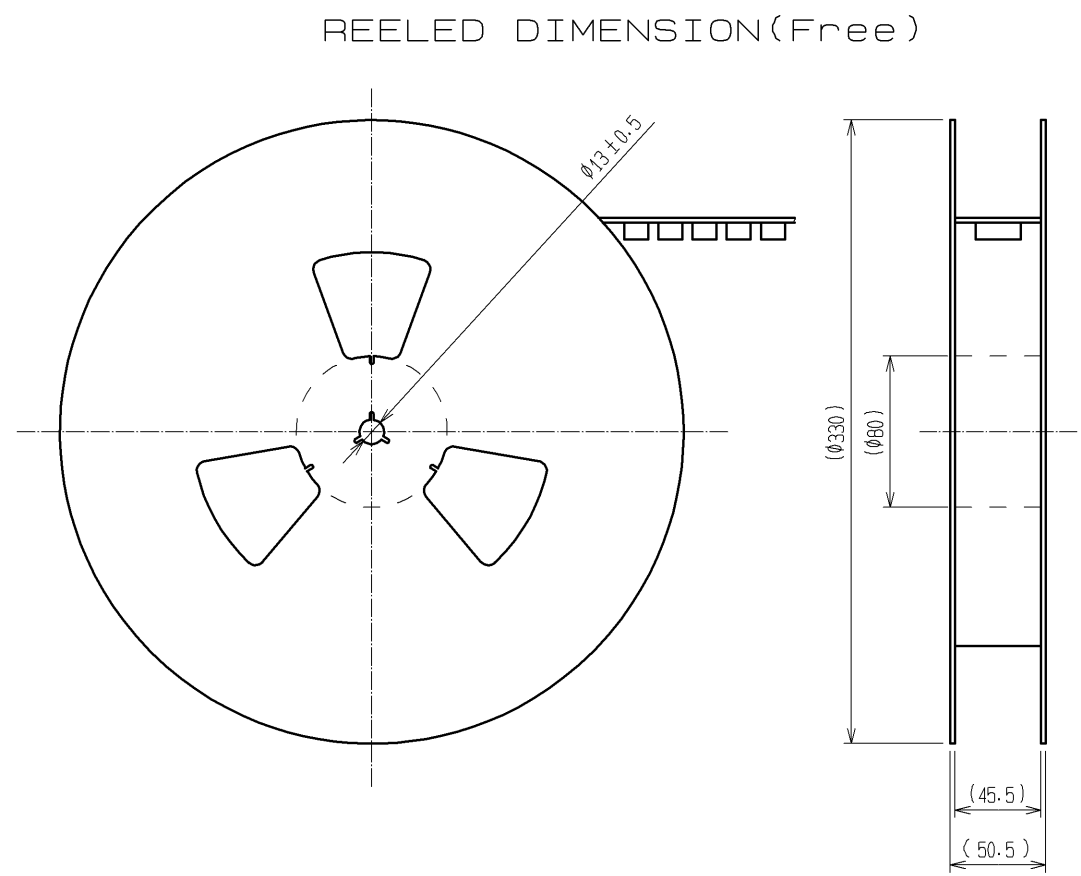
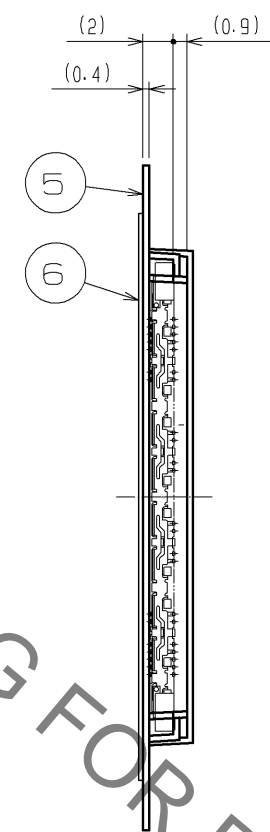
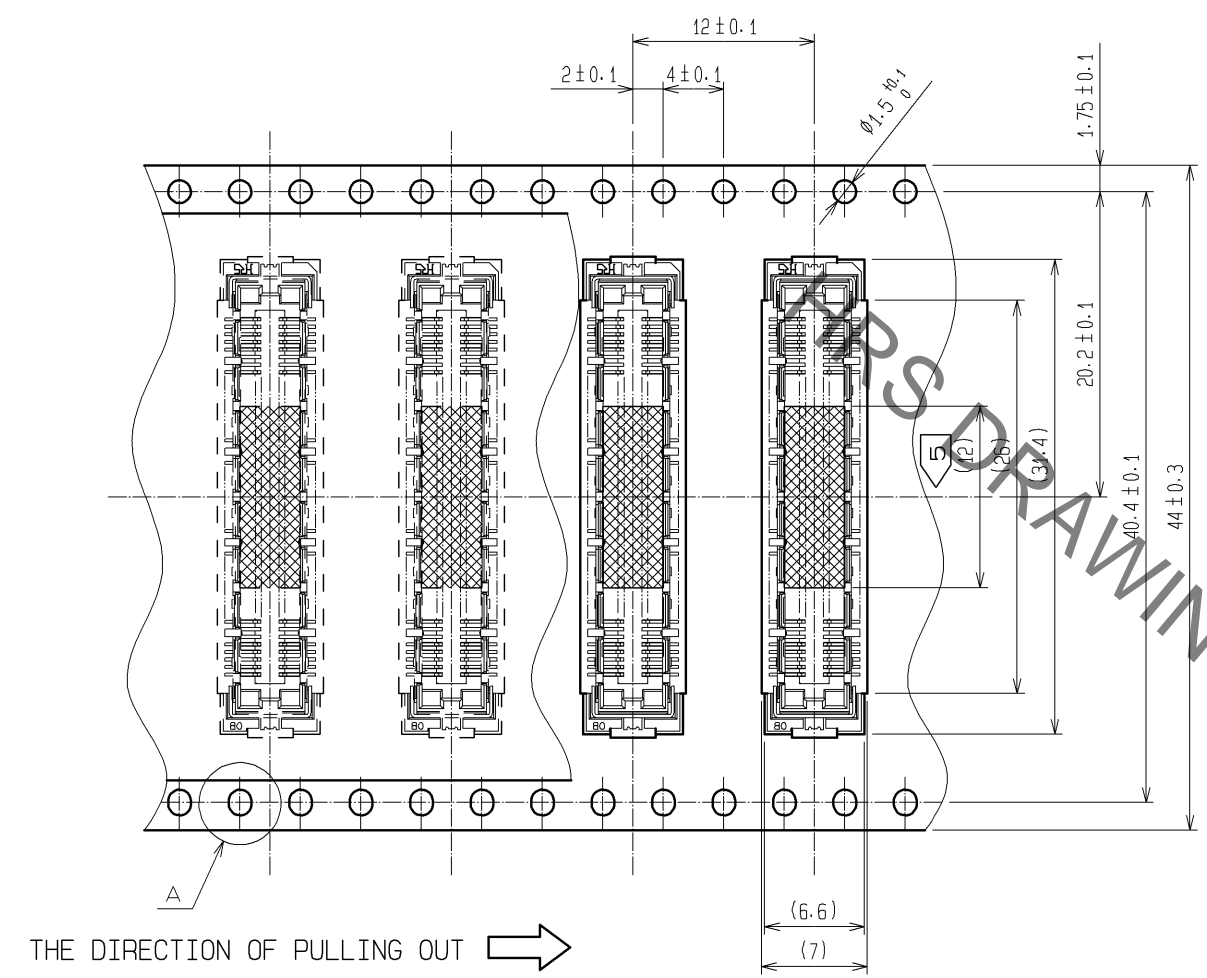


- NOTES
- 1 8 HATCHED PARTS: GROUND CIRCUIT.
 - 2 2 HATCHED PARTS: GROUND CIRCUIT.
 - 3 SMT LEAD-COPLANARITY: 0.1 MAX.
 - 4 THIS PRODUCT HAS NO POLARITY TO PATTERN FOR MOUNTING.
 - 5 MAKE SURE WIDTH OF PATTERN IS WITHIN THAT OF LAND .OR LEAD MAY TOUCH PATTERN. (THIS APPLIES TO HATCHED AREA.)
 - 6 TO BE EMBOSSED CARRIER TAPED AS SPECIFIED IN SHEET 2.
 - 7 THE DIMENSIONS IN PARENTHESES ARE FOR REFERENCE.

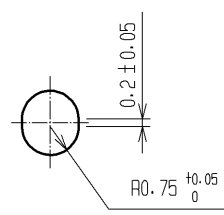
3, 4	PHOSPHOR BRONZE	TIN PLATING			
2	PHOSPHOR BRONZE	CONTACT AREA : GOLD $0.1\mu\text{m}$ min.	7	POLYIMIDE	(TAPE FOR VACUUM PICKUP)
		LEAD AREA : GOLD $0.05\mu\text{m}$ min.	6	PET	TOP COVER TAPE
1	LCP	UNDER PLATING : NICKEL $1\mu\text{m}$ min.	5	PS	EMBOSSED CARRIER TAPE
NO.	MATERIAL	FINISH , REMARKS	NO.	MATERIAL	FINISH , REMARKS
UNITS mm		SCALE 5 : 1	COUNT 	DESCRIPTION OF REVISIONS	DESIGNED CHECKED DATE
APPROVED : HS. OKAWA	09.06.30	DRAWING NO.	EDC3-152113-22		
CHECKED : HT. YAMAGUCHI	09.06.30	PART NO.	FX11LB-80S/8-SV(92)		
DESIGNED : YN. TAKANO	09.06.30	CODE NO.	CL573-0113-8-92		
DRAWN : HK. SUNADORI	09.06.29				

Sep.1.2021 Copyright 2021 HIROSE ELECTRIC CO., LTD. All Rights Reserved.
In case of consideration for using Automotive equipment / device which demand high reliability, kindly contact our sales window correspondents.

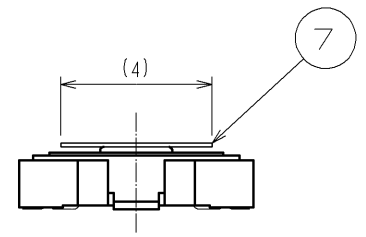
DRAWING FOR PACKING(2:1)



A (5:1)



DETAIL FOR VACUUM PICKUP (5:1)



- NOTES
- 1 1REEL : 1000 CONNECTORS.
 - 2 MINIMUM 10 COMPARTMENTS FROM BOTH REEL ENDS REMAIN EMPTY.
 - 3 THIS PRODUCT HAS NO POLARITY TO TAPE AND REEL PACKAGING.
 - 4 THE DIMENSIONS IN PARENTHESES ARE FOR REFERENCE.
 - 5 REMOVE THE VACUUM PICKUP TAPE AFTER MOUNTING THE CONNECTOR.

HRS	DRAWING NO.	EDC3-152113-22
	PART NO.	FX11LB-80S/8-SV(92)
	CODE NO.	CL573-0113-8-92

Mouser Electronics

Authorized Distributor

Click to View Pricing, Inventory, Delivery & Lifecycle Information:

[Hirose Electric:](#)

[FX11LB-80S/8-SV\(92\)](#)