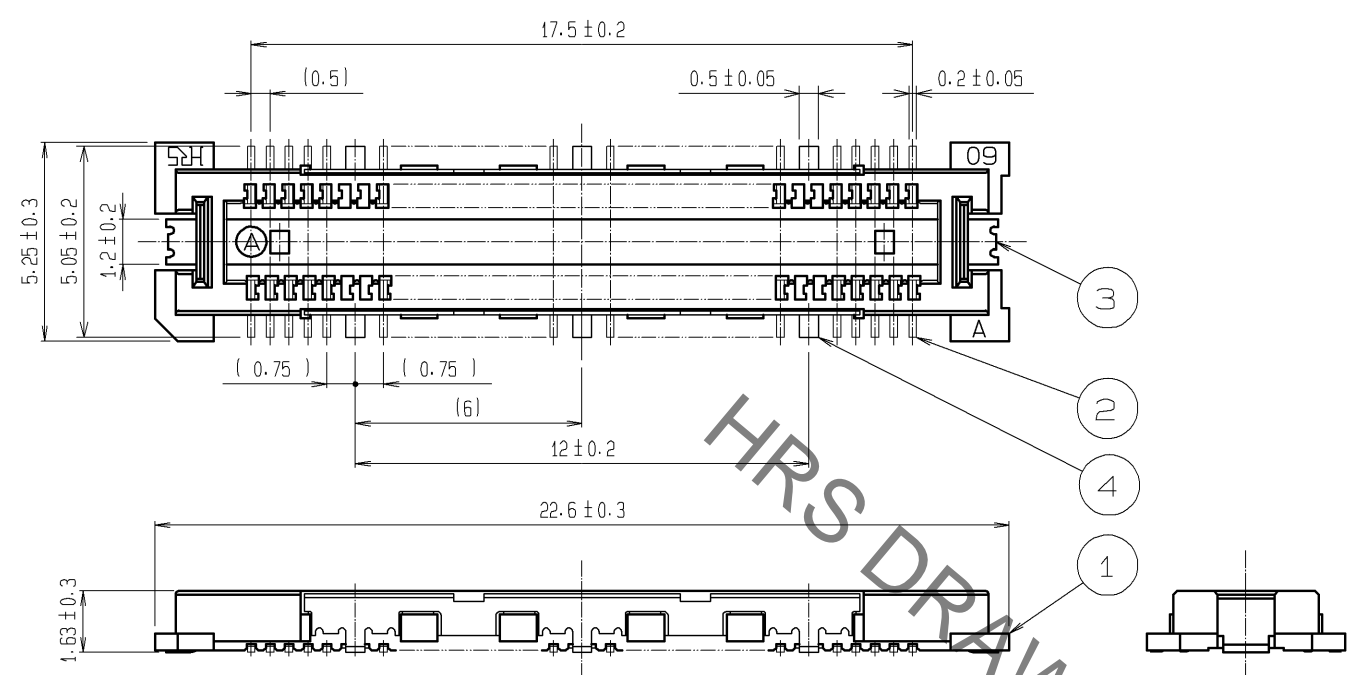
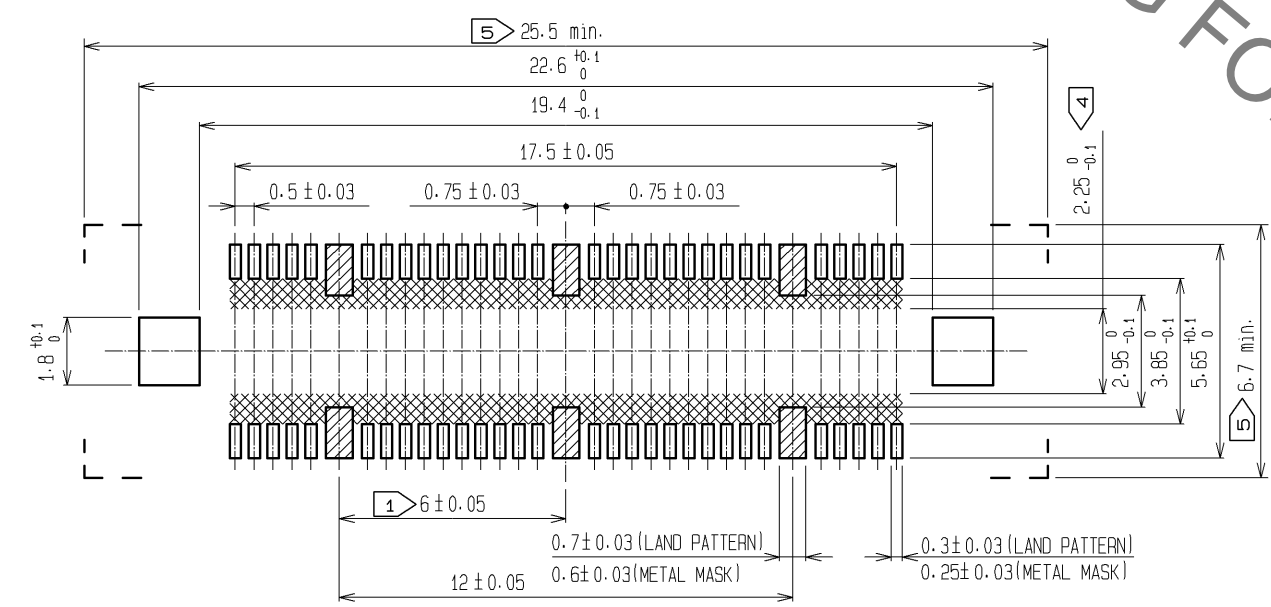


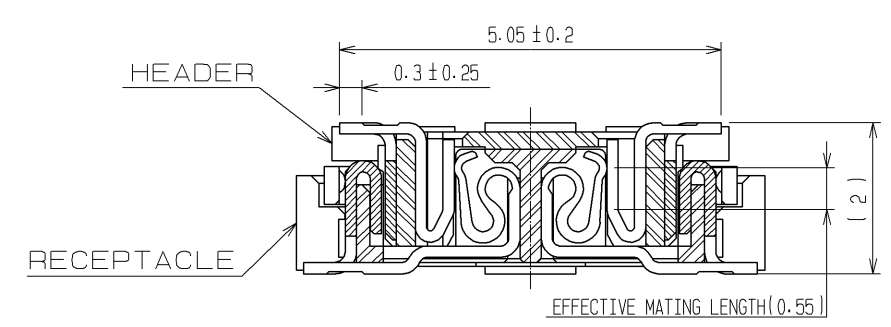
Sep.1.2021 Copyright 2021 HIROSE ELECTRIC CO., LTD. All Rights Reserved.
In case of consideration for using Automotive equipment / device which demand high reliability, kindly contact our sales window correspondents.



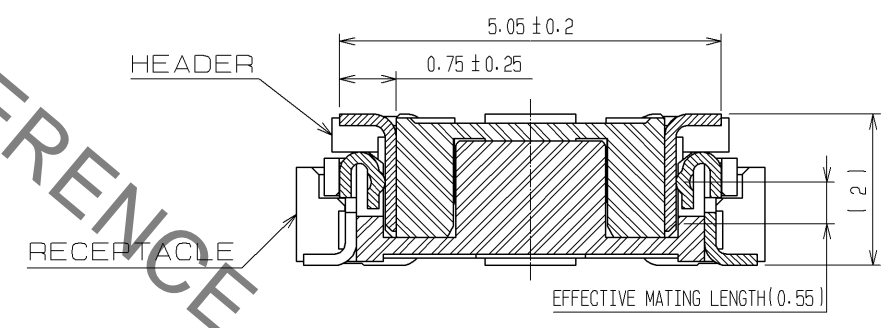
RECOMMENDED LAND PATTERN DIMENSION OF PCB

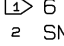
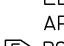
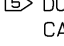


SIGNAL PORTION CROSS SECTION (10 : 1)

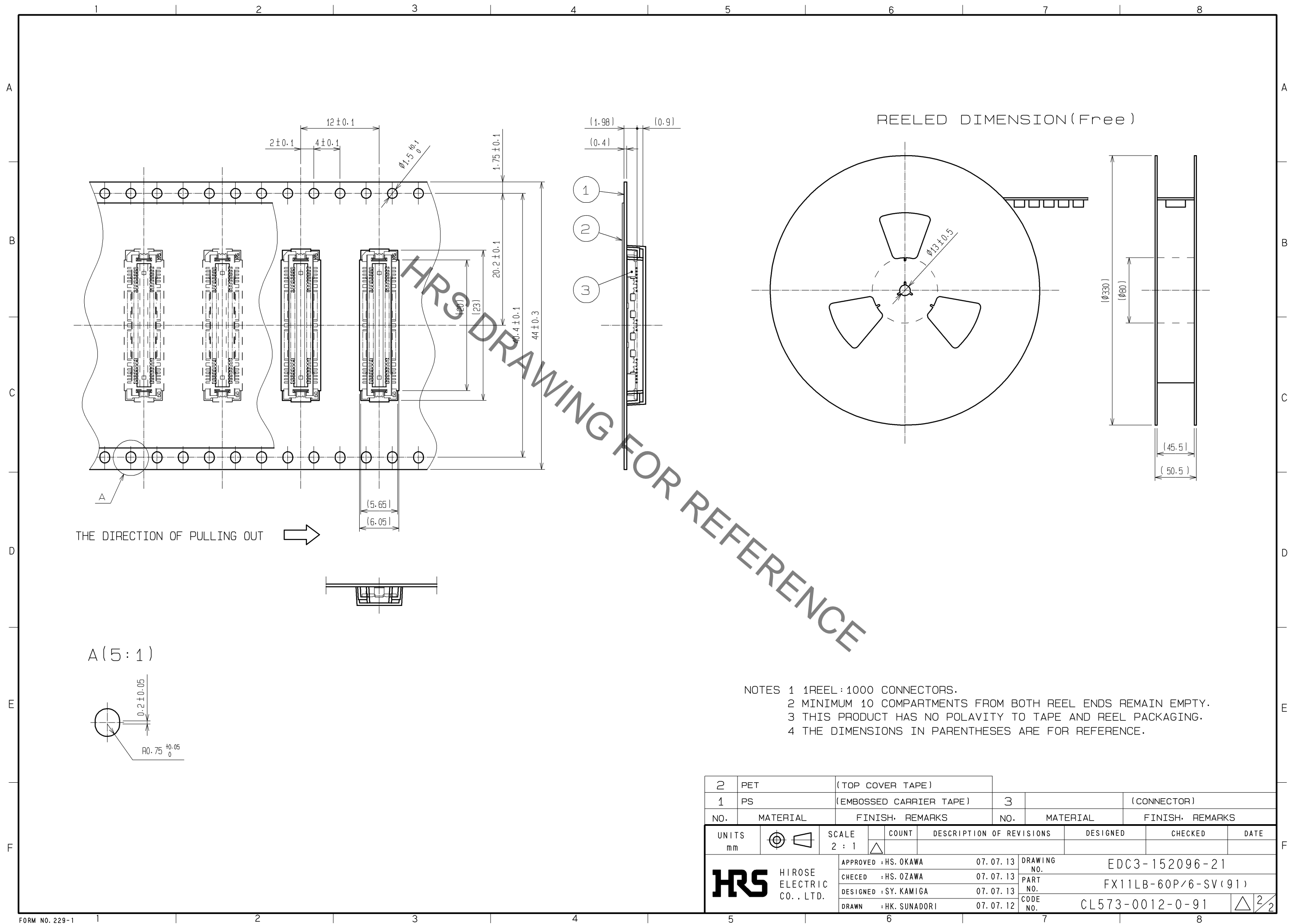


GROUND PORTION CROSS SECTION (10 : 1)



- NOTES
- ① 6 HATCHED  PARTS: GROUND CIRCUIT.
 - ② SMT LEAD-COPLANARITY: 0.1 MAX.
 - ③ THIS PRODUCT HAS NO POLARITY TO PATTERN FOR MOUNTING.
 - ④ MAKE SURE WIDTH OF PATTERN IS WITHIN THAT OF LAND, OR LEAD MAY TOUCH PATTERN. (THIS APPLIES TO HATCHED  AREA.)
 - ⑤ DO NOT MOUNT OTHER DEVICES ONTO  AREA, OR MATING PAIR CANNOT BE MATED.
 - ⑥ TO BE EMBOSSED CARRIER TAPED AS SPECIFIED IN SHEET 2.
 - ⑦ THE DIMENSIONS IN PARENTHESES ARE FOR REFERENCE.

1		LCP	BEIGE	UL94V-0	4		PHOSPHOR BRONZE	TIN PLATING
NO.		MATERIAL	FINISH	REMARKS	3		PHOSPHOR BRONZE	TIN PLATING
					2		COPPER ALLOY	CONTACT AREA : GOLD 0.1μm min. LEAD AREA : GOLD FLASH UNDER PLATING : NICKEL 1μm min.
UNITS		mm	SCALE	5 : 1	COUNT		DESCRIPTION OF REVISIONS	DESIGNED
								CHECKED
								DATE
APPROVED		HS. OKAWA	07.07.13	DRAWING NO.		EDC3-152096-21		
CHECKED		HS. OZAWA	07.07.13	PART NO.		FX11LB-60P/6-SV(91)		
DESIGNED		SY. KAMIGA	07.07.13	CODE NO.		CL573-0012-0-91		
DRAWN		HK. SUNADORI	07.07.12					



Mouser Electronics

Authorized Distributor

Click to View Pricing, Inventory, Delivery & Lifecycle Information:

[Hirose Electric:](#)

[FX11LB-60P/6-SV\(91\)](#)