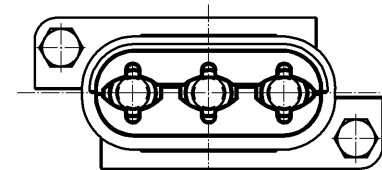
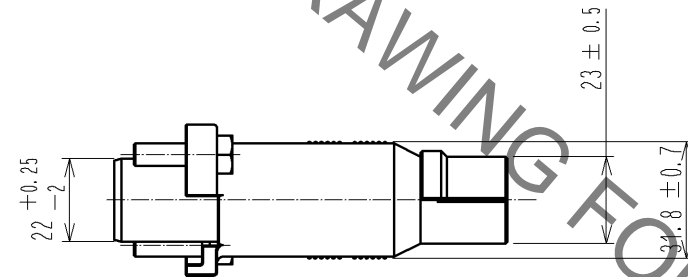
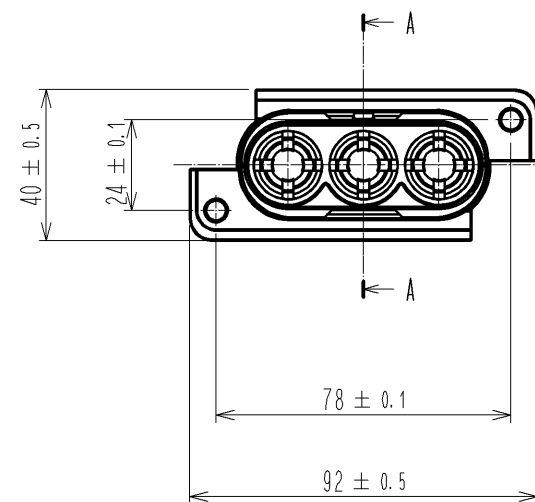
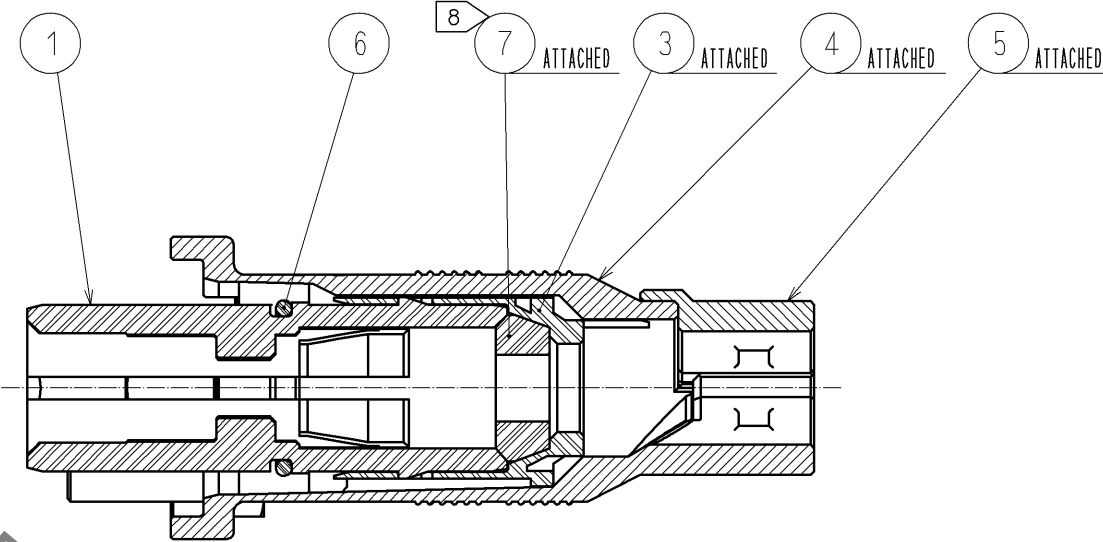


A-A(1:1)



- NOTES 1 APPLICABLE CRIMP CONTACT EXTRACTION TOOL : EV1-22-TP(CL150-0251-5).
2 REFER TO THE TECHNICAL SPECIFICATION 'ATAD-C0209' FOR ASSEMBLY PROCEDURE.
3 ROTATION EXAMPLES OF REF. NO. ④ AND ⑥ ARE SHOWN.
4 ROTATION EXAMPLES OF REF. NO. ⑤ AND ⑨ ARE SHOWN.
5 APPLICABLE CABLE COMPOSITION IS DONE BY THE FOLLOWING.

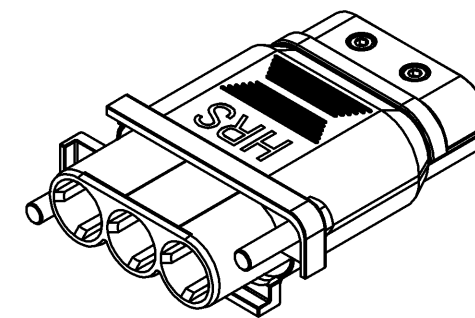
LINE		BRAIDED SHIELD THICKNESS	OUTER DIAMETER
CONDUCTOR SQUARE	INSULATION DIAMETER		
20 mm ²	φ 8.7 mm	0.45 mm	11.5 mm

⑥ THE RECOMMENDED TIGHTENING TORQUE : REF. NO. ⑧, ⑨ : 5 ± 0.25 N · m.

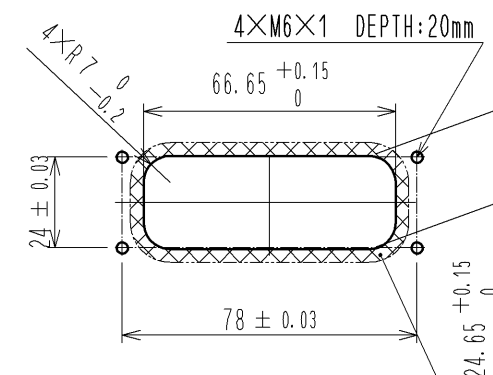
7 APPLICABLE CRIMP CONTACT : EV1-PC-112(CL139-0004-9) OR EV1-PC1-112(CL139-0005-1)

① ⑧ DO NOT APPLY LUBRICANTS SUCH AS AREASE TO REF. NO. ⑦.

OBLIQUE DRAWING

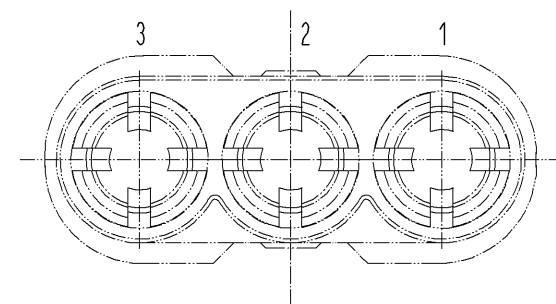


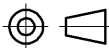



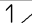
PANEL CUT OUT



SURFACE ROUGHNESS AT 3.5mm OR MORE AROUND
THE PANEL CUT OUT INDICATED BY SHALL BE $\sqrt{Rz3.2}$.

CONTACT ARRANGEMENT FROM MATING FACE.



5	ALUMINIUM ALLOY	NICKEL PLATING							
4	ALUMINIUM ALLOY	NICKEL PLATING	9	STEEL	CHROMATE TREATMENT (TRIVALENT CHROMIUM)	HEXAGON SOCKET HEAD CAP SCREW	M4(L=18)		
3	POLYAMIDE	(BLACK) UL94V-0	8	STEEL	CHROMATE TREATMENT (TRIVALENT CHROMIUM)	HEXAGON HEAD BOLT	M6(L=16)		
2	_____	_____	7	FLUOROSILICONE RUBBER SILICONE RUBBER	(BLACK)				
1	POLYAMIDE	(BLACK) UL94V-0	6	HYDROGENATED ACRYLONITRILE BUTADIENE RUBBER	(BLACK)				
NO.	MATERIAL	FINISH	REMARKS		NO.	MATERIAL	FINISH		REMARKS
UNITS mm			SCALE 1 : 2	 COUNT 2	DESCRIPTION OF REVISIONS DIS-C-003104		DESIGNED HS. KAWASHIMA	CHECKED HY. KOBAYASHI	DATE 13. 06. 21
 HIROSE ELECTRIC CO., LTD.		APPROVED : SU. OBARA		11. 10. 06		DRAWING NO. EDC3-116716-00			
		CHECKED : HY. KOBAYASHI		11. 10. 06		PART NO. EV1-62P-3PC			
		DESIGNED : YH. YAMADA		11. 10. 06		CODE NO. CL139-0001-0-00			
		DRAWN : YH. YAMADA		11. 10. 06		 			

Mouser Electronics

Authorized Distributor

Click to View Pricing, Inventory, Delivery & Lifecycle Information:

[Hirose Electric:](#)

[EV1-62P-3PC](#)