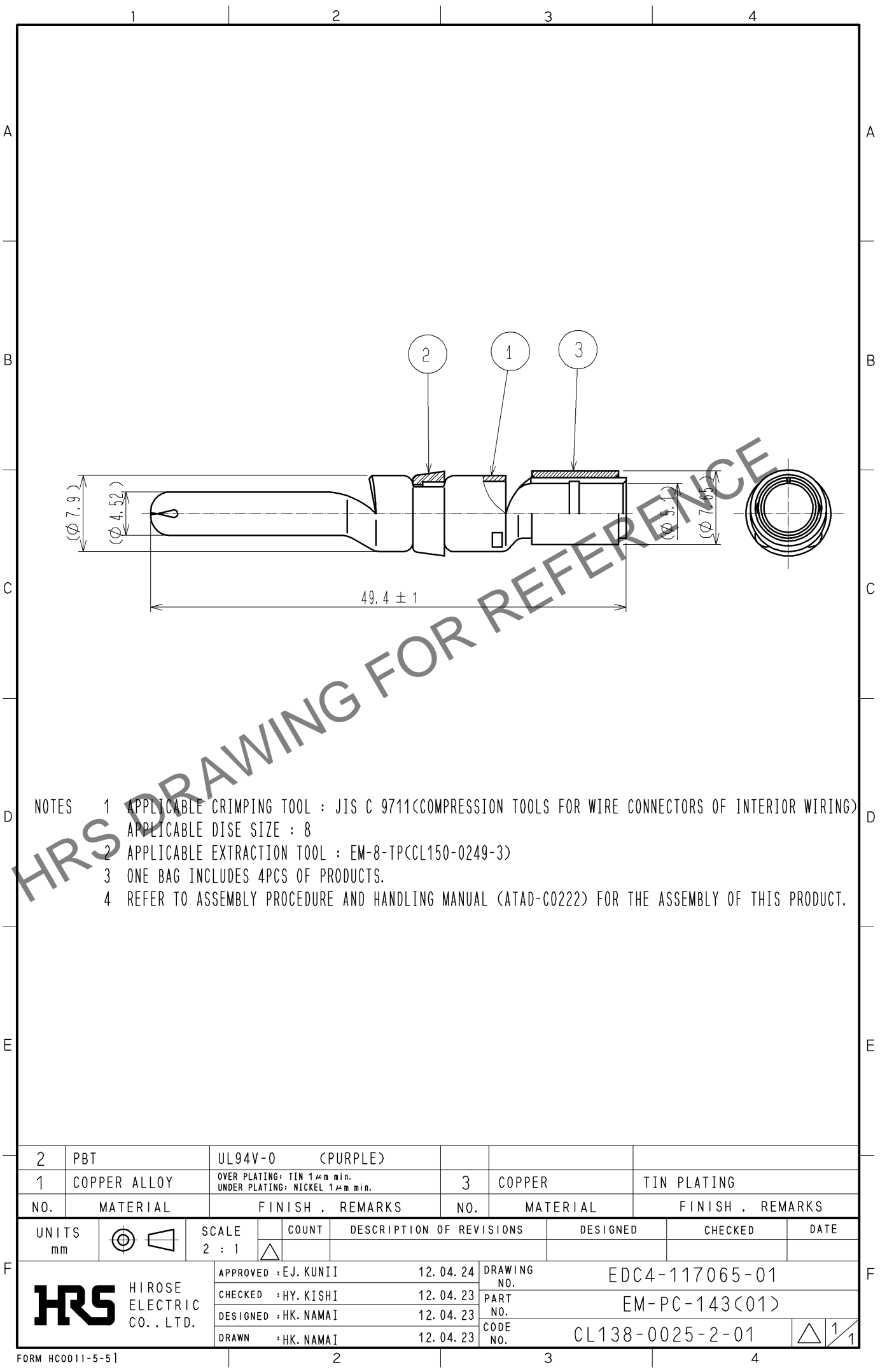
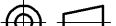





Dec.1.2024 Copyright 2024 HIROSE ELECTRIC CO., LTD. All Rights Reserved.
In case of consideration for using Automotive equipment / device which demand high reliability, kindly contact our sales window correspondents.



- NOTES
- 1 APPLICABLE CRIMPING TOOL : JIS C 9711<COMPRESSION TOOLS FOR WIRE CONNECTORS OF INTERIOR WIRING>
APPLICABLE DISE SIZE : 8
 - 2 APPLICABLE EXTRACTION TOOL : EM-8-TP<CL150-0249-3>
 - 3 ONE BAG INCLUDES 4PCS OF PRODUCTS.
 - 4 REFER TO ASSEMBLY PROCEDURE AND HANDLING MANUAL (ATAD-C0222) FOR THE ASSEMBLY OF THIS PRODUCT.

2	PBT	UL94V-0 (PURPLE)						
1	COPPER ALLOY	OVER PLATING: TIN 1μm min. UNDER PLATING: NICKEL 1μm min.		3	COPPER	TIN PLATING		
NO.	MATERIAL	FINISH , REMARKS		NO.	MATERIAL	FINISH , REMARKS		
UNITS mm		SCALE 2 : 1	 COUNT	DESCRIPTION OF REVISIONS		DESIGNED	CHECKED	DATE
 HIROSE ELECTRIC CO., LTD.		APPROVED : EJ. KUNII	12. 04. 24	DRAWING NO.		EDC4-117065-01		
		CHECKED : HY. KISHI	12. 04. 23	PART NO.		EM-PC-143<01>		
		DESIGNED : HK. NAMAI	12. 04. 23	CODE NO.		CL138-0025-2-01		
		DRAWN : HK. NAMAI	12. 04. 23				1/1	

Mouser Electronics

Authorized Distributor

Click to View Pricing, Inventory, Delivery & Lifecycle Information:

[Hirose Electric:](#)

[EM-PC-143\(01\)](#)