

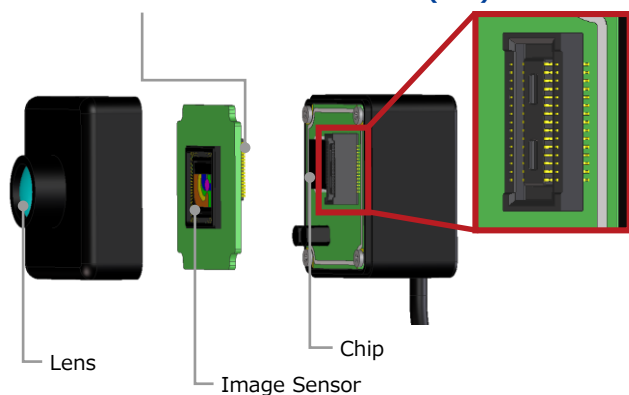
## Features

- 1 125°C heat resistance for automotive specifications
- 2 0.4mm pitch, 3.38mm depth, small FPC to board connector
- 3 Wide position and height varieties
- 4 PCI Express 4.0 (16Gbps) compliant
- 5 Optimized contact design and material for high heat resistance

## Board-to-Board connection in Automotive Camera

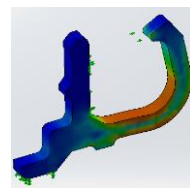
**Header:**  
DF40TC-30DP-0.4V

**Receptacle:**  
DF40TC(3.5)-30DS-0.4V



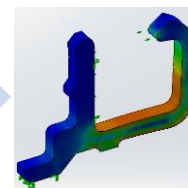
## 125°C Heat Resistant Contact

Existing product  
(DF40)



Improve stress relaxation property with 125°C heat resistant material and spring design

DF40T



## Specifications

Rated Current	0.3A
Rated Voltage	30V AC
Operating Temperature	-55 to +125°C*
Contact Resistance	90mΩ Max. (100mA DC or 1000Hz)
Withstanding Voltage	100V AC for 1 min.
Insulation Resistance	50MΩ Min. (100V DC)

\* Include the temperature rising by current flow.

## Heat resistant/temperature cycle test result

125°C / 2000h

-55 to 125°C / 2000 cycle

	[mΩ]			[mΩ]	
	Initial	After test		Initial	After test
AVG	18.67	20.82	AVG	17.67	17.30

# Mouser Electronics

Authorized Distributor

Click to View Pricing, Inventory, Delivery & Lifecycle Information:

## Hirose Electric:

[DF40TC\(3.5\)-30DS-0.4V\(51\)](#) [DF40TB-10DS-0.4V\(51\)](#) [DF40TC-50DS-0.4V\(51\)](#) [DF40TC\(2.5\)-50DS-0.4V\(51\)](#)  
[DF40TC-40DP-0.4V\(51\)](#) [DF40TC-30DP-0.4V\(51\)](#) [DF40TC-34DP-0.4V\(51\)](#) [DF40TC-34DS-0.4V\(51\)](#) [DF40TC-50DP-](#)  
[0.4V\(51\)](#) [DF40TC-40DS-0.4V\(51\)](#) [DF40TC-10DP-0.4V\(51\)](#)