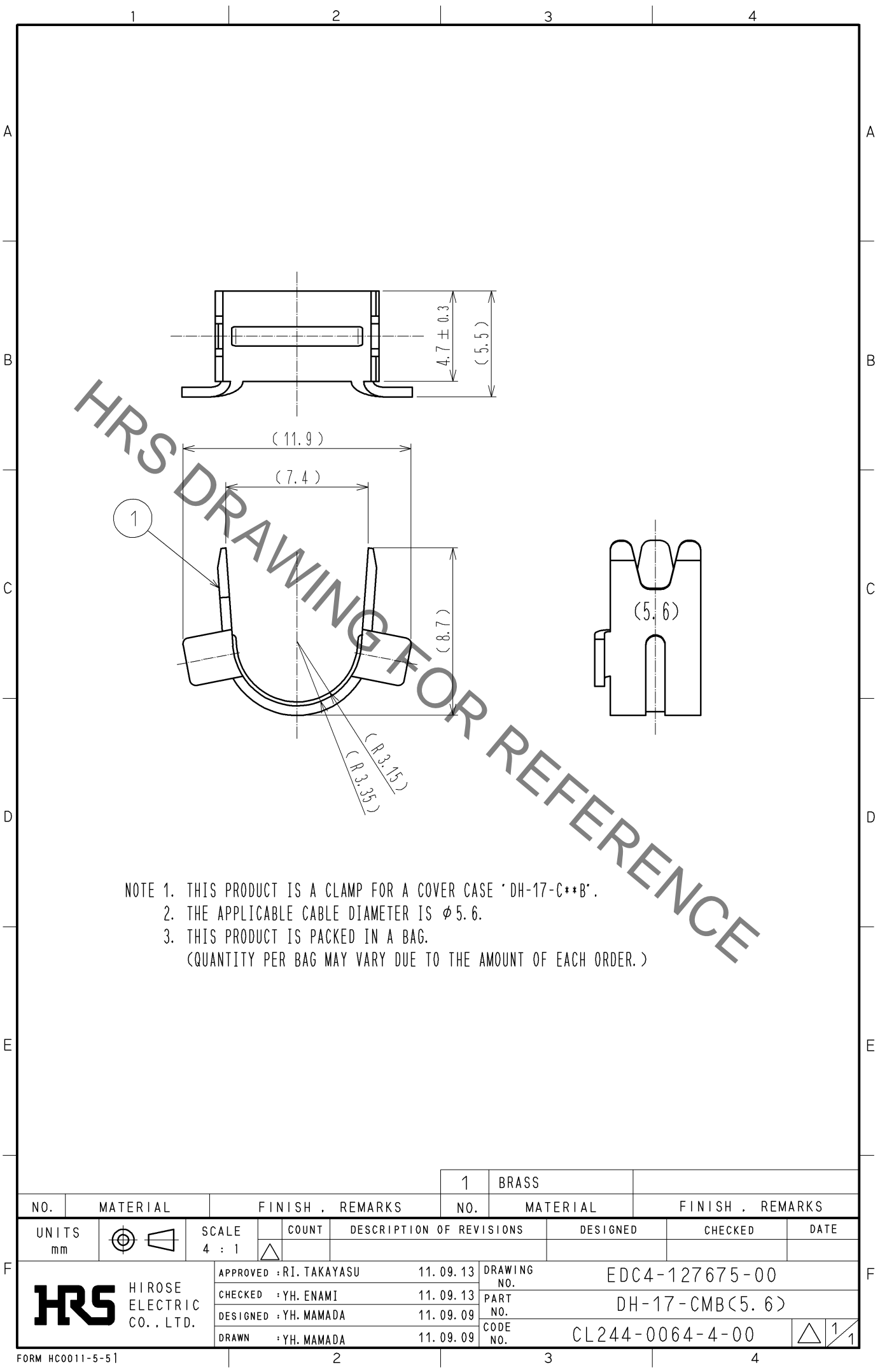


Sep.1.2021 Copyright 2021 HIROSE ELECTRIC CO., LTD. All Rights Reserved.
In case of consideration for using Automotive equipment / device which demand high reliability, kindly contact our sales window correspondents.



- NOTE 1. THIS PRODUCT IS A CLAMP FOR A COVER CASE 'DH-17-C**B'.
2. THE APPLICABLE CABLE DIAMETER IS $\phi 5.6$.
3. THIS PRODUCT IS PACKED IN A BAG.
(QUANTITY PER BAG MAY VARY DUE TO THE AMOUNT OF EACH ORDER.)

1		BRASS						
NO.	MATERIAL	FINISH . REMARKS		NO.	MATERIAL	FINISH . REMARKS		
UNITS mm		SCALE 4 : 1	COUNT 	DESCRIPTION OF REVISIONS		DESIGNED	CHECKED	DATE
HIROSE ELECTRIC CO., LTD.		APPROVED :RI. TAKAYASU	11. 09. 13	DRAWING NO.		EDC4-127675-00		
		CHECKED :YH. ENAMI	11. 09. 13	PART NO.		DH-17-CMB<5. 6>		
		DESIGNED :YH. MAMADA	11. 09. 09	CODE NO.		CL244-0064-4-00		
		DRAWN :YH. MAMADA	11. 09. 09			1/1		

Mouser Electronics

Authorized Distributor

Click to View Pricing, Inventory, Delivery & Lifecycle Information:

[Hirose Electric:](#)

[DH-17-CMB\(5.6\)](#)