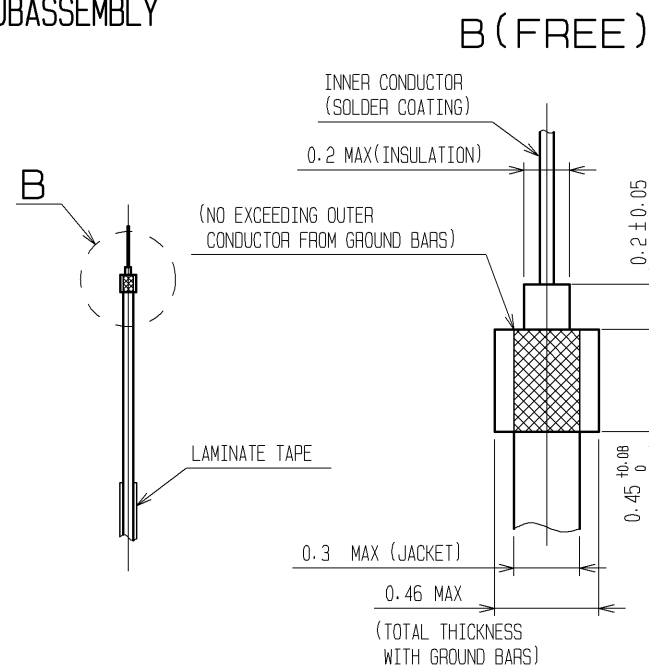
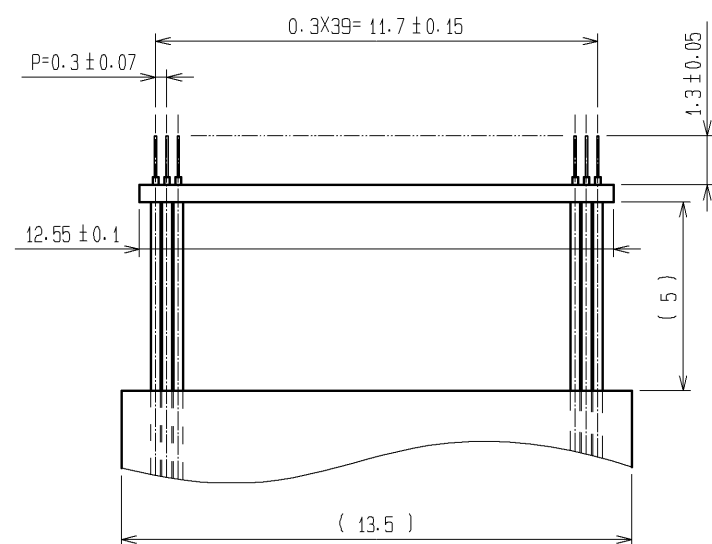
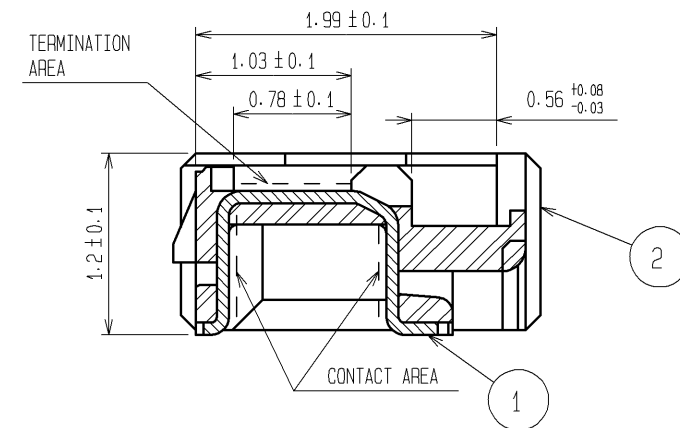


RECOMMENDED CABLE SUBASSEMBLY

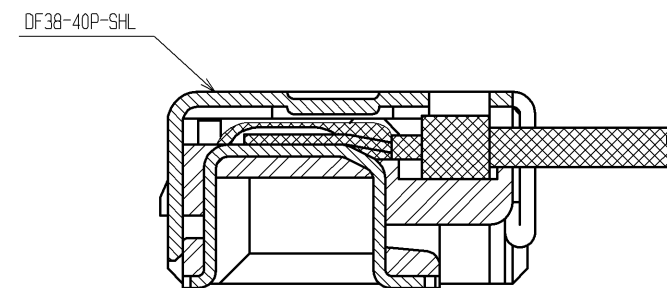


B (FREE)

A-A (20 : 1)

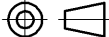


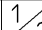


CABLE TERMINATION FIGURE (20 : 1)

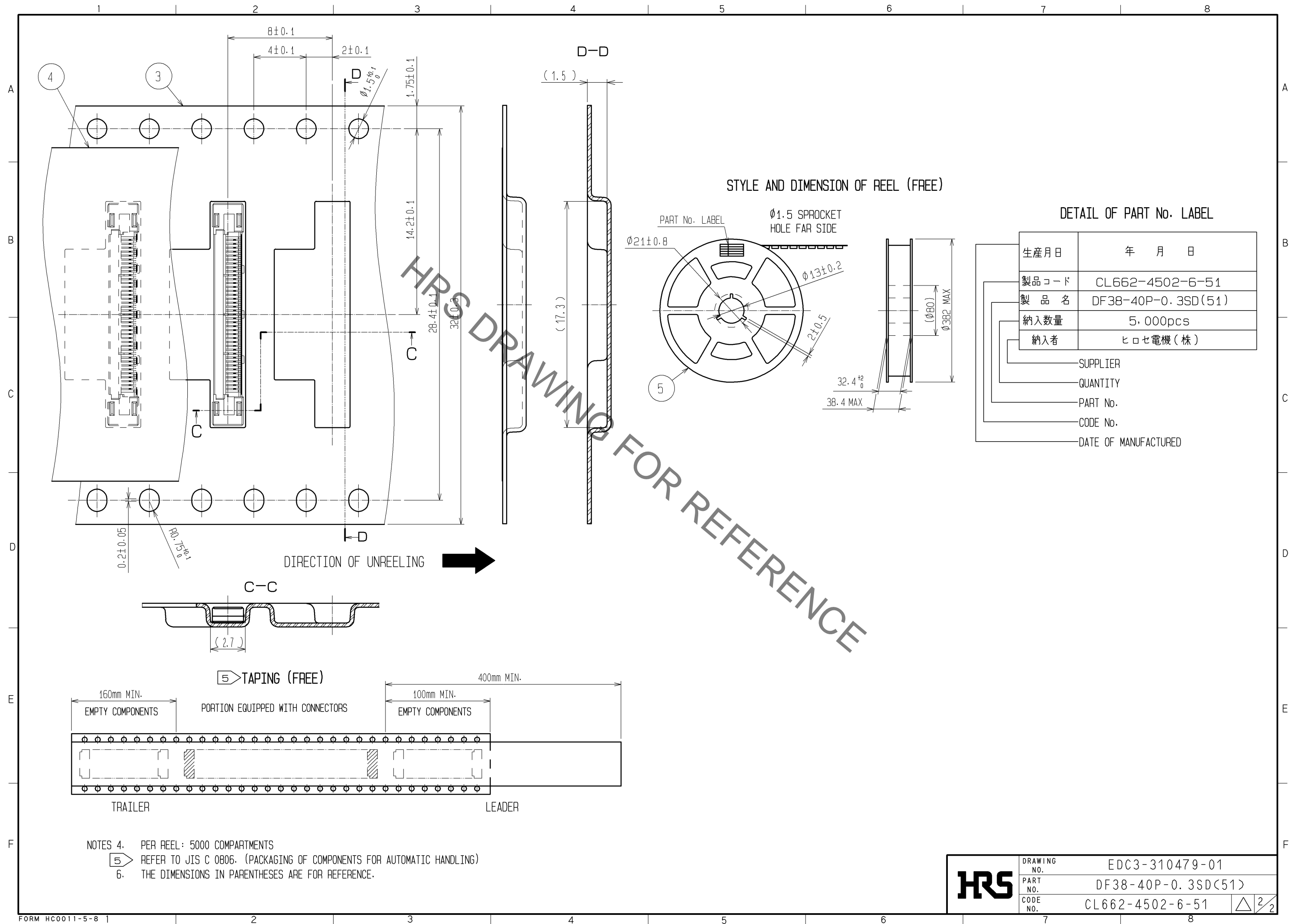


- NOTES 1. APPLICABLE CABLE: THIN COAXIAL CABLE (AWG#42~AWG#46)
2. THIS CONNECTOR IS NOT HOT PLUGGABLE. MATE AND UNMATE WHILE THE POWER IS OFF.
3. THE ASSEMBLY IS COMPLETED BY COMBINING TWO PARTS [CONNECTOR UNIT, AND METAL SHIELDING]. REFER TO THE TABLE FOR EACH ITEM No., PART NAME, PART No. AND CODE No.

ITEM No.	PART NAME	PART No.	CODE No.
1, 2	CONNECTOR UNIT	DF38-40P-0.3SD(51)	CL662-4502-6-51
-	METAL SHIELDING	DF38-40P-SHL	CL662-4503-9

2	LCP	UL94V-0・BLACK		5	PS	BLACK				
1	PHOSPHOR BRONZE	CONTACT AREA : Au PLATING 0.1μm min		4	POLYESTER	CLEAR				
		TERMINATION AREA : Au PLATING 0.1μm min		3	PS	CLEAR				
UNDER PLATING : Ni PLATING 1μm min										
NO.	MATERIAL	FINISH , REMARKS		NO.	MATERIAL	FINISH , REMARKS				
UNITS mm		SCALE FREE		COUNT	DESCRIPTION OF REVISIONS		DESIGNED	CHECKED	DATE	
				APPROVED : TS. SAKATA		13.07.12	DRAWING NO.		EDC3-310479-01	
				CHECKED : TS. SAKATA		13.07.12	PART NO.		DF38-40P-0.3SD<51>	
				DESIGNED : TP. MATSUMOTO		13.07.11	CODE NO.		CL662-4502-6-51	
HRS		HIROSE ELECTRIC CO. , LTD.		DRAWN : TP. MATSUMOTO		13.07.11				

Sep.1.2021 Copyright 2021 HIROSE ELECTRIC CO., LTD. All Rights Reserved.
In case of consideration for using Automotive equipment / device which demand high reliability, kindly contact our sales window correspondents.



Mouser Electronics

Authorized Distributor

Click to View Pricing, Inventory, Delivery & Lifecycle Information:

[Hirose Electric:](#)

[DF38-40P-0.3SD\(51\)](#)