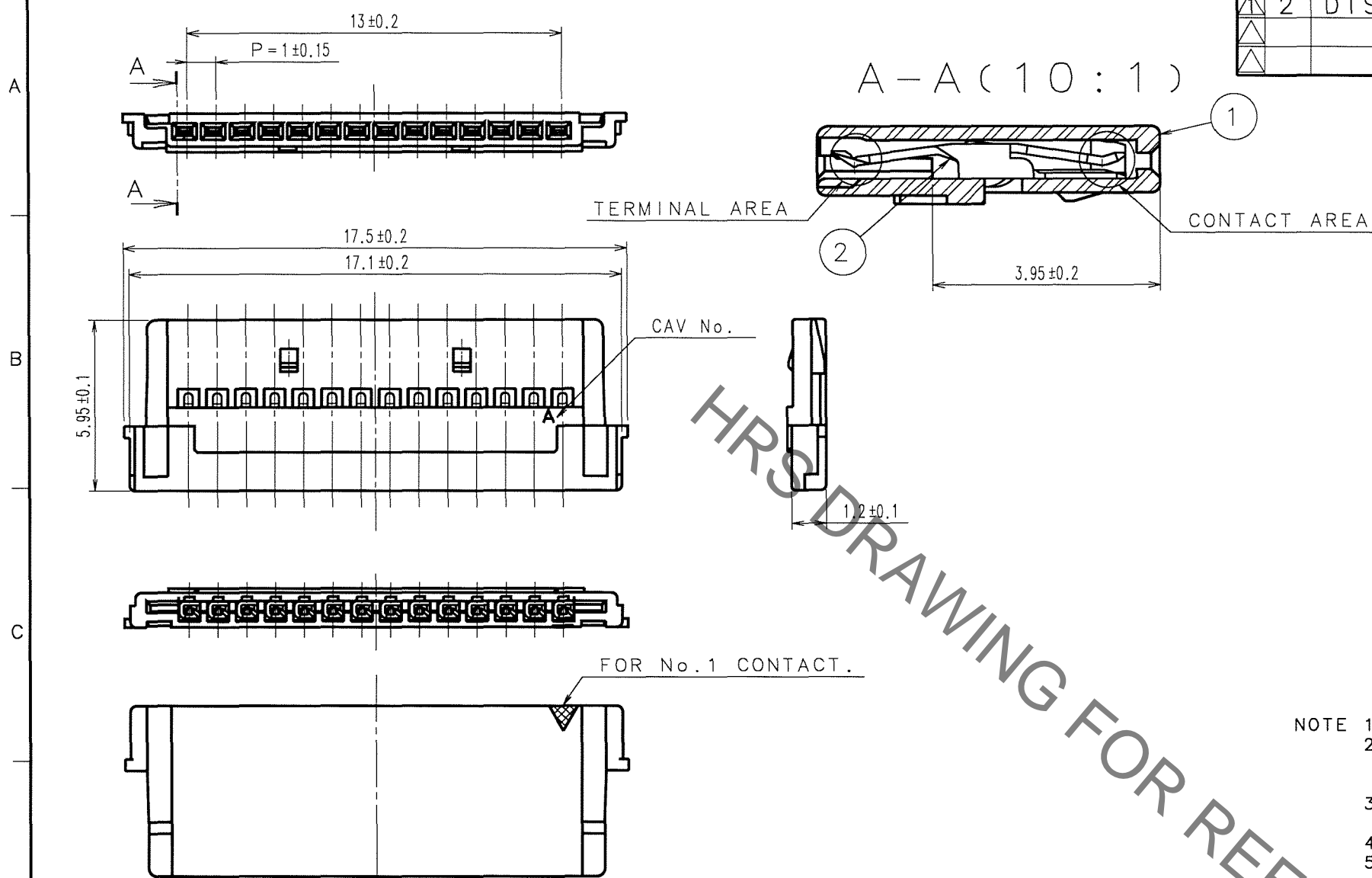


	COUNT	DESCRIPTION OF REVISIONS	BY	CHKD	DATE		COUNT	DESCRIPTION OF REVISIONS	BY	CHKD	DATE
▲	2	DIS-H-000773	I-D	H.U	06.02.09	▲					. .
▲					. .	▲					. .
▲					. .	▲					. .



## HOW TO ASSEMBLE

INSERT FPC INTO A GND BOARD FROM  
TOP FACE OBLIQUELY.

1ST. STEP

✓ LET THROUGH THE LEADING EDGE OF FPC.

AFTER THROUGH THE LEADING EDGE,  
PULL IT DOWN.

## 2ND. STEP

SIGNAL SURFACE.

---

GND SURFACE.

STRETCH FPC AND THEN INSERT IT TO SOCKET.

### 3RD. STEP

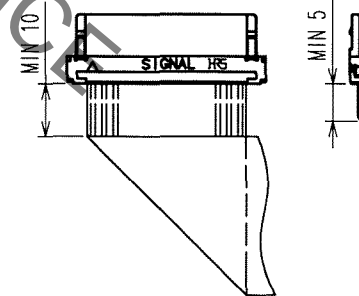
INSERT GND BOARD INTO SOCKET TEMPORARILY.

4TH. STEP

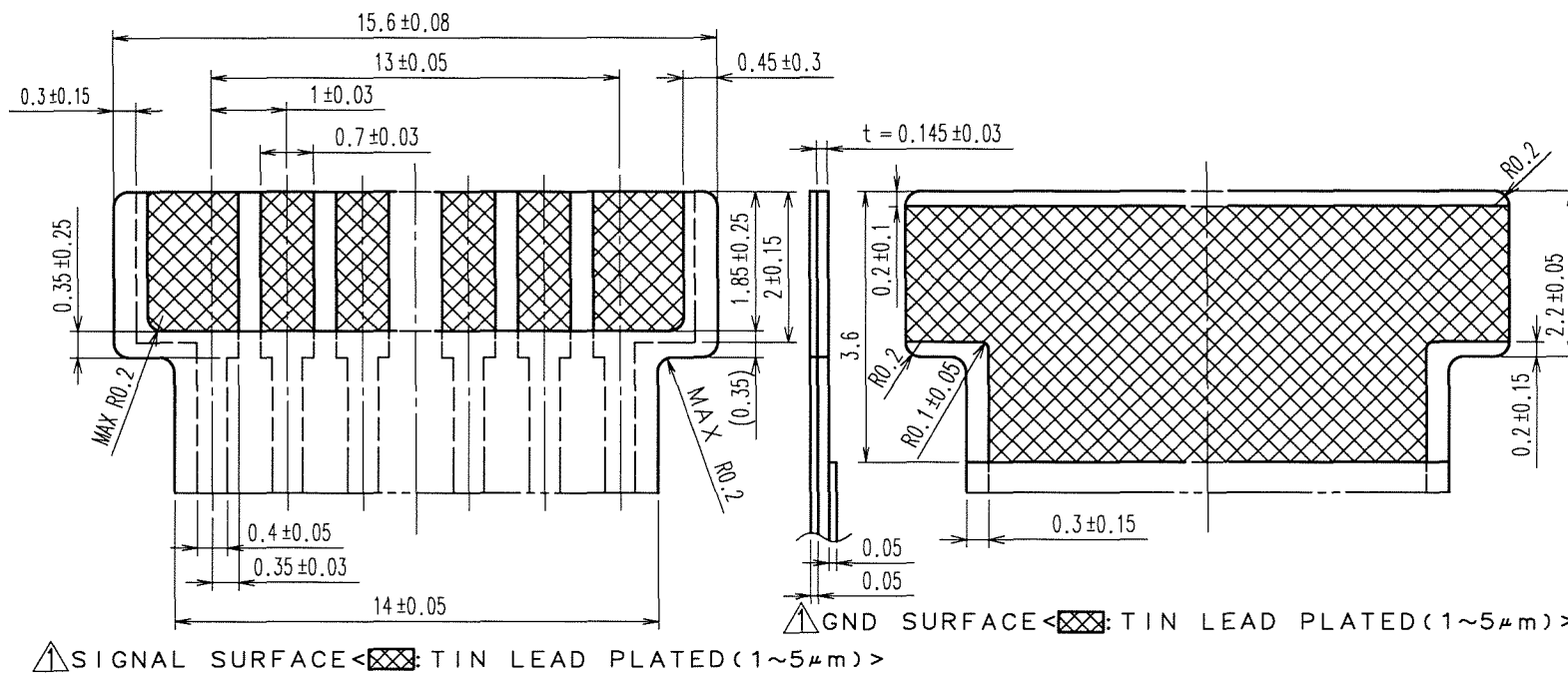
INSERT GND BOARD COMPLETELY WITH SPECIALIZED TOOL.

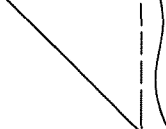
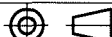

COMPLETED

NOTE 1: TRAY PACKAGING. (100 PCS)  
2: GND BOARD AND SOCKET, EACH SHOULD BE TREATED AS A  
INDIVIDUAL PRODUCT, AND BE SUPPLIED INDIVIDUALLY.  
(GND BOARD:DF19G-14S-1F-GND(05)/CL685-0018-5-05)  
3: IF IT'S NEEDED TO CONNECT SIGNAL SURFACE AND GND, IT MUST  
BE DONE BY THROUGH HOLE ON FPC.  
4: USE SPECIALIZED TOOL TO ASSEMBLE FPC.  
5: INSERTION AND WITHDRAWAL OF CONNECTOR SHALL BE MADE  
PERPENDICULAR TO MATING SURFACE.  
6: THIS PRODUCT IS NOT INTENDED TO HAVE ANY STRAIN ON  
THE CONDUCTORS IN SUCH INSTANCE AS CLOSE-OPEN MOTION  
OF NOTEBOOK COMPUTER.  
7: BEND RADIUS OF FPC SHALL BE AS SPECIFIED BY THE FPC  
MANUFACTURER.  
BENDING POSITION TO BE AS SHOWN BELOW.



## RECOMMENDED PATTERNS OF FPC(10:1)



			2	PHOSPHOR BRONZE	CONTACT AREA: GOLD PLATED 0.1mm min		
					TERMINAL AREA: TIN PLATED 1mm min		
					UNDER PLATED: NICKEL PLATED 0.5mm min		
1	POLYAMIDE	UL94V-0, NATURAL(BEIGE)					
NO.	MATERIAL	FINISH, REMARKS			NO.	MATERIAL	FINISH, REMARKS
CODE NO. (OLD)			DRAWN	DESIGNED	CHECKED	APPROVED	RELEASED
			A.Miyazaki	I.Denpouya	H.Umehara	T.Oma	
			06.01.25	06.01.30	06.01.30	06.01.30	
		DRAWING NO.			PART NO.		
SCALE 5 : 1		EDC3-162745-02			DF19G-14S-1F(05)		
UNITS mm		 HIROSE ELECTRIC CO.,LTD.			CODE NO.		1/1
					CL685-0017-2-05		

# Mouser Electronics

Authorized Distributor

Click to View Pricing, Inventory, Delivery & Lifecycle Information:

[Hirose Electric:](#)

[DF19G-14S-1F\(05\)](#)